



欧诺威

SHANDONG OUNUOWEI NUMERICAL CONTROL TOOL CO.,LTD

液压刀柄系列

2024

您身边的数控刀具专家
YOU AROUND THE CNC TOOL EXPERTS





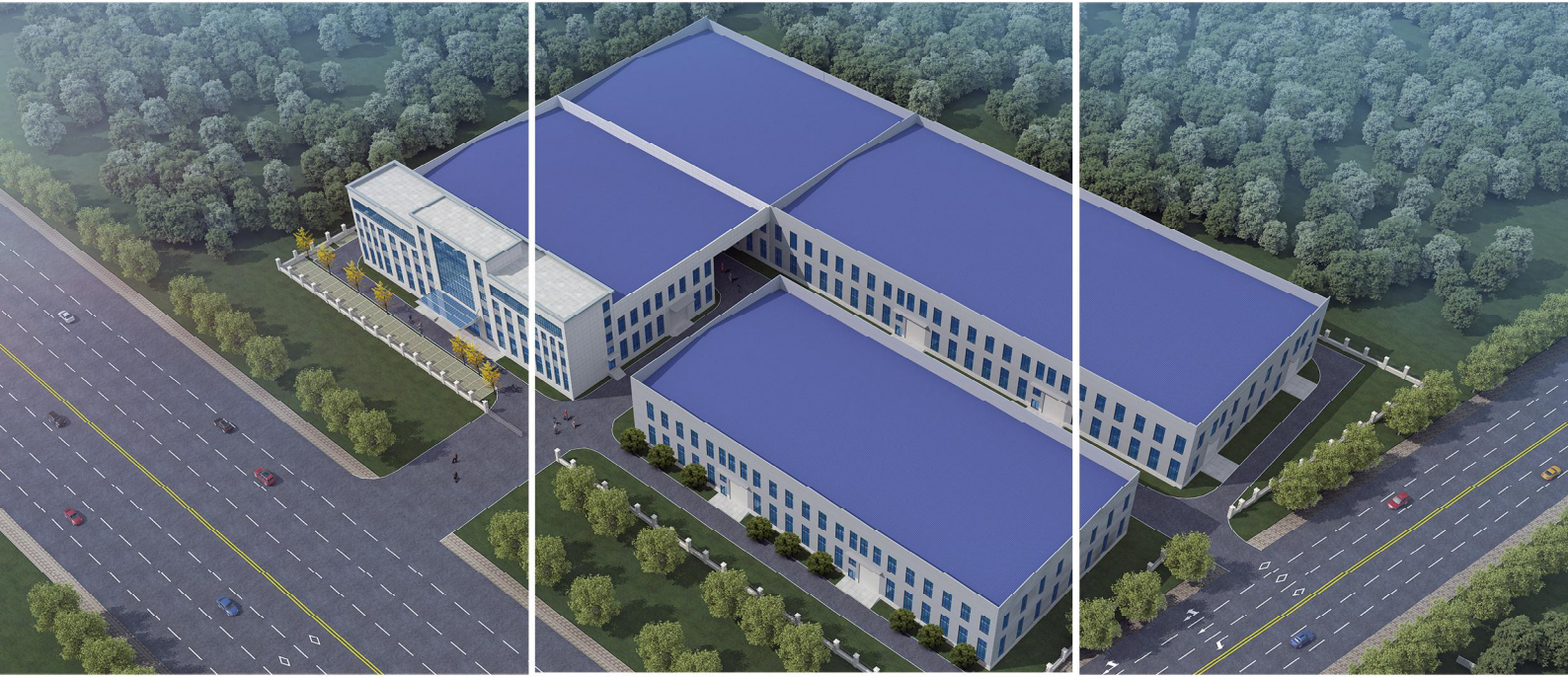
2024

CNC TOOL ONE-STOP PROCUREMENT

CNC TOOL

Please enter your headline Please enter your headlinePlease enter your headlinePlease enter your headline Please enter your headlinePlease enter your headlinePlease enter your headline P
lease enter your headlinePlease enter your headlinePlease enter your headline Please enter your headlinePlease enter your headlinePlease enter your headline
Please enter your headline Please enter your headlinePlease enter your headlinePlease enter your headline Please enter your headline Please enter your headline
Please enter your headline Please enter your headlinePlease enter your headline Please enter your headline Please enter your headline Please enter your headline

让您的机床更高效
It will make your machine more efficient.



公司简介

COMPANY INTRODUCTION

山东欧诺威数控刀具有限公司成立于2009年，坐落于山东省济宁泗水经济开发区，是一家专业生产中高端数控刀具企业。多年来，欧诺威一直专注于高端数控刀具产品的研发设计和生产制造，主营产品有HSK/BBT/BT/ISO/SK/NT等高精度数控刀柄系列，ER/SK等高精度筒夹，高端铣刀盘/铣刀杆/快速钻/玉米铣刀，可转位刀具及加工中心周边产品等。欧诺威产品采用国家标准GB、国际标准ISO、德国标准DIN、美国标准ANSI、日本标准JIS等不同标准，产品设计采用Pro/Engineer/、UG、AutoCAD、SolidWork等设计软件，自行研发、设计、制造，同时可以设计制造专用、非标数控刀具等行业前沿产品。

“做中国好刀具”是欧诺威数控刀具的企业愿景，让中国生产的刀具品质可以媲美于国外品牌是欧诺威数控刀具的追求，欧诺威更是对产品质量的严格要求根植到每个员工心中，采用ISO9001国际质量管理体系严控生产环节，公司率先采用先进的ERP生产管理系统，整合分析采购、生产、销售主要环节的信息数据并加以沉淀，为客户提供稳定高效贴心的服务。公司先后引进了瑞士斯图特STUDER、瑞士KELLENBERGER克林伯格高精度内外圆复合磨床，日本津上TSUGAMI高精度磨床，日本山崎马扎克MAZAK/日本大隈OKUMA数控车铣复合及马扎克MAZAK五轴加工中心等高端加工设备。引进日本三丰Mitutoyo三坐标，日本三丰Mitutoyo二次元投影仪，三丰Mitutoyo圆柱度仪，三丰Mitutoyo粗糙度轮廓仪，德国戴博Diebold刀柄锥度检具，德国海默HAIMER动平衡机，德国ZOLLER卓勒对刀仪等高端检测仪器。公司生产所需材料进口日本瑞典及国内大型钢厂标准牌号钢材，引进德国先进热处理设备，超深冷处理设备及工艺流程，从而保证了产品的稳定性。欧诺威数控刀具拥有一支在国内数控刀具行业中有着长达20多年职业生涯的专业技术管理团队，其中本科刀具工程师3名，专科刀具工程师8名，能随时随地为客户提供技术支持。欧诺威数控刀具同时拥有高效的销售团队，能够及时高效的回复客户的售前售后等问题。公司地处位置优越的鲁南地区，京沪高铁及鲁南高铁贯穿而入，江浙沪发货今发明至，其他地区3-4天到货，能够第一时间把产品交付到客户手中，保证时效性。欧诺威产品主要出口欧洲、德国、意大利、俄罗斯、美国、日本、韩国、澳大利亚等40多个国家和地区，在航空、航天、5G/3C、船舶、汽车、工程机械、新能源等行业中得到广泛的应用，赢得了客户的一致好评。公司法人王金梅女士谨代表山东欧诺威数控刀具有限公司热诚欢迎国内外客户来访，紧密合作共谋发展。

➔ 领导关怀

LEADERSHIP CONCERN



山东省夏省长来我厂莅临指导工作
THE GOVERNOR CAME TO VISIT OUR FACTORY



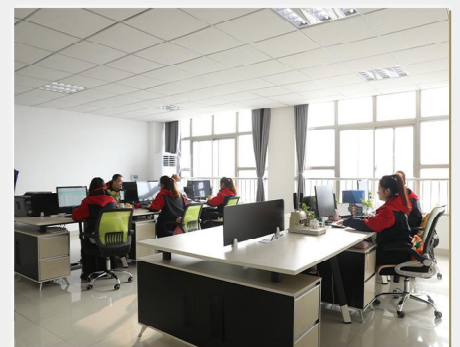
市委副书记石光亮调研欧诺威



省商务厅副厅长任海涛调研欧诺威

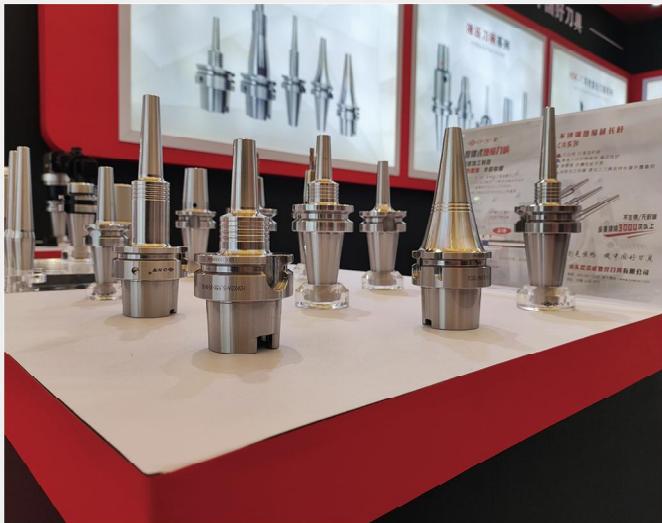
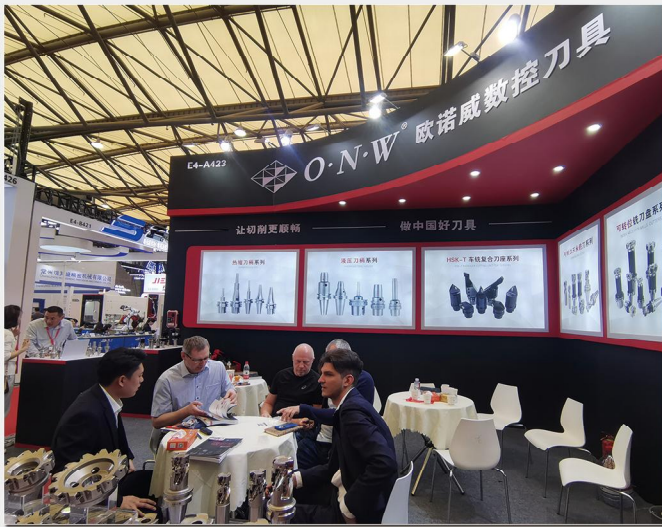
➔ 办公一角

OFFICE CORNER



➔ 参加展会

EXHIBITION PHOTOS





生产车间

PRODUCTION WORKSHOP



检测设备

TESTING EQUIPMENT



日本三丰三坐标检测仪
Mitutoyo Coordinate Measuring Machine



1: 10锥度检测工具图 (德国戴博刀柄检具)
Picture of 1:10 taper inspection tool
(German Daibo collet chuck inspection tool)



日本三丰真圆度仪
Japanese Mitutoyo Round Test Machine



电主轴检测线
Electric Spindle Test Machines

➔ 仓储配送中心

WAREHOUSE DISTRIBUTION CENTER



➔ 包装

PACKAGING



·HSK 液压刀柄系列 HSK HYDRAULIC CHUCKS SERIES



·SBT 液压刀柄系列 SBT HYDRAULIC CHUCKS SERIES



·BT 液压刀柄系列 BT HYDRAULIC CHUCKS SERIES



·SK 液压刀柄系列 SK HYDRAULIC CHUCKS SERIES



HYDRAULIC CHUCKS SERIES

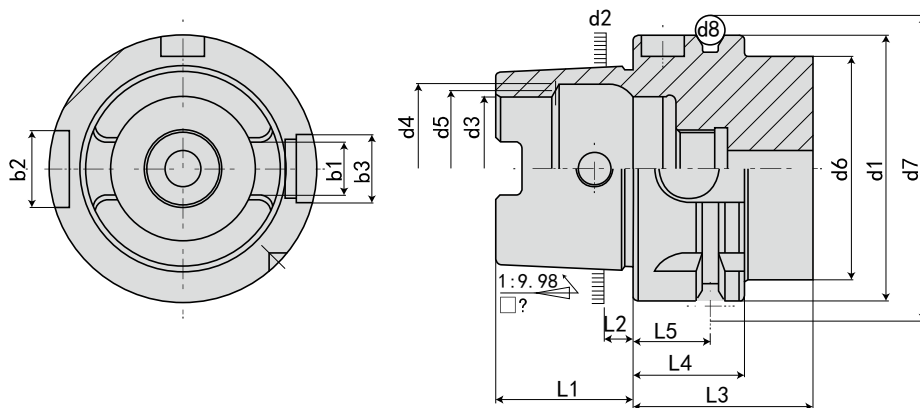
液压刀柄系列

仅需一支扳手装夹 方便快捷



·参考资料 REFERENCE DETAILS

DIN 69893A



规格 Model	d1 h10	d2	d3 H10	d4 H11	d5	d6 Max.	d7 0 -0.1	d8	L1 0 -0.2	L2	L3 Min.	L4 0 -0.1	L5 ±0.1	b1 ±0.04	b2 H10	b3 H10
HSK32A	32	24.007	17	20.5	19	26	37	4	16	3.2	35	20	16	7.05	9	7
HSK40A	40	30.007	21	25.5	23	34	45	4	20	4	35	20	16	8.05	11	9
HSK50A	50	38.009	26	32	29	42	59.3	7	25	5	42	26	18	10.54	14	12
HSK63A	63	48.010	34	40	37	53	72.3	7	32	6.3	42	26	18	12.54	18	16
HSK80A	80	60.012	42	50	46	67	88.8	7	40	8	42	26	18	16.04	20	18
HSK100A	100	75.013	53	63	58	85	109.75	7	50	10	45	29	20	20.02	22	20

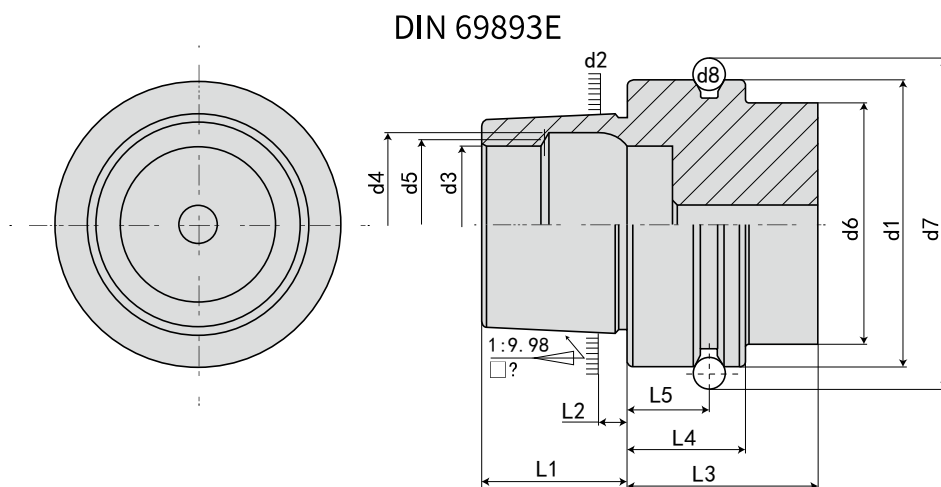
特点:

注:

- ◎锥度精度: < AT3
- ◎基本材质: 20CrMnTi/15CrMo
- ◎硬度: HRC56° 渗碳深度 > 0.8mm
- ◎真圆度: < 0.8μm
- ◎表面粗糙度: Ra < 0.5μm
- ◎刀杆有预设标准动平衡 G6.3, 可另外指定精密动平衡 G2.5
- ◎本体规范: DIN 69893-1

Features:

- ◎ Taper tolerance < AT3.
- ◎ Basic Material: 20CrMnTi/15CrMo.
- ◎ Hardness > HRC56° Carbon depth > 0.8mm.
- ◎ Roundness < 0.8μm.
- ◎ Surface roughness: Ra < 0.5μm.
- ◎ The shank has pre-balance at G6.3, and can provide percision balance at G2.5, made by request.
- ◎ Shank body standard: DIN69893-1.

·参考资料 REFERENCE DETAILS


规格 Model	d_1 h10	d_2	d_3 H10	d_4 H11	d_5	d_6 Max.	d_7 0 -0.1	d_8	L_1 0 -0.2	L_2	L_3 Min.	L_4 0 -0.1	L_5 ± 0.1
HSK25E	25	19	14	16.4	15	20	28.5	2	13	2.5	20	10	4.5
HSK32E	32	24	17	21	19	26	37	3	16	3.2	35	20	16
HSK40E	40	30	21	25.5	23	34	45	4	20	4	35	20	16
HSK50E	50	38	26	32	29	42	59.3	7	25	5	42	26	18
HSK63E	63	48	34	40	37	53	72.3	7	32	6.3	42	26	18

特点:
注:

- ◎ 锥度精度: < AT3
- ◎ 基本材质: 20CrMnTi/15CrMo
- ◎ 硬度: HRC56° 渗碳深度 > 0.8mm
- ◎ 真圆度: < 0.8 μ m
- ◎ 表面粗糙度: Ra < 0.5 μ m
- ◎ 刀杆有预设标准动平衡 G6.3, 可另外指定精密动平衡 G2.5
- ◎ 本体规范: DIN 69893-5

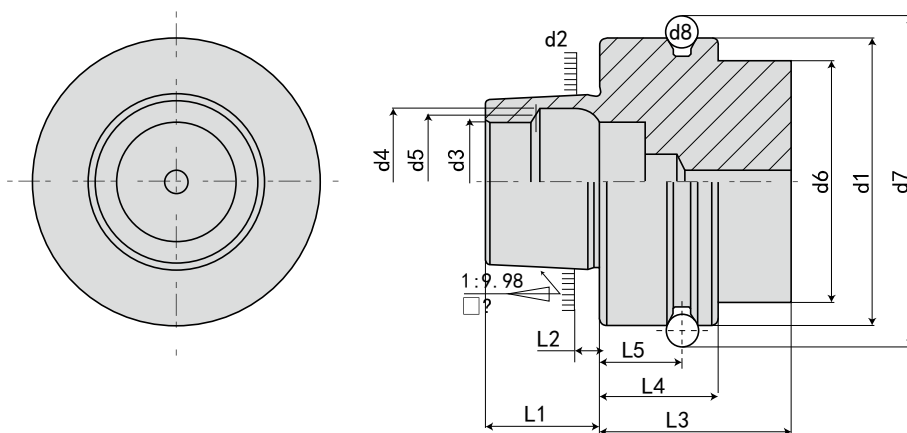
Features:

- ◎ Taper tolerance < AT3.
- ◎ Basic Material: 20CrMnTi/15CrMo.
- ◎ Hardness > HRC56° Carbon depth > 0.8mm.
- ◎ Roundness < 0.8 μ m.
- ◎ Surface roughness: Ra < 0.5 μ m.
- ◎ The shank has pre-balance at G6.3, and can provide percision balance at G2.5, made by request.
- ◎ Shank body standard: DIN69893-5.

·参考资料

REFERENCE DETAILS

DIN 69893F



规格 Model	d1 h10	d2	d3 H10	d4 H11	d5	d6 Max.	d7 0 -0.1	d8	L1 0 -0.2	L2	L3 Min.	L4 0 -0.1	L5 ±0.1
HSK50F	50	30.007	21	25.5	23	42	59.3	7	20	4	42	26	18
HSK63F	63	38.009	26	32	29	53	72.3	7	25	5	42	26	18
HSK80F	80	48	34	40	37	67	88.8	7	32	6.3	42	26	18

特点:

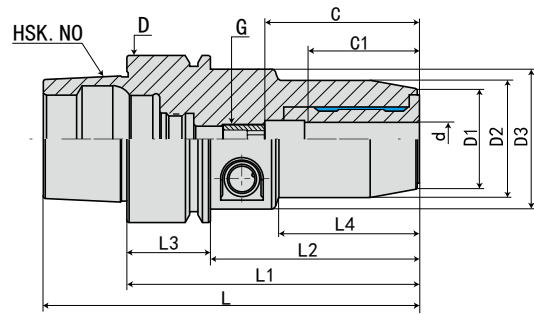
注:

- ◎锥度精度: < AT3
- ◎基本材质: 20CrMnTi/15CrMo
- ◎硬度: HRC56° 渗碳深度 > 0.8mm
- ◎真圆度: < 0.8μm
- ◎表面粗糙度: Ra < 0.5μm
- ◎刀杆有预设标准动平衡 G6.3, 可另外指定精密动平衡 G2.5
- ◎本体规范: DIN 69893-6

Features:

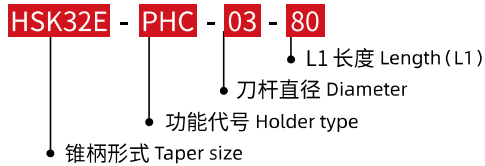
- ◎ Taper tolerance < AT3.
- ◎ Basic Material: 20CrMnTi/15CrMo.
- ◎ Hardness > HRC56° Carbon depth > 0.8mm.
- ◎ Roundness < 0.8μm.
- ◎ Surface roughness: Ra < 0.5μm.
- ◎ The shank has pre-balance at G6.3, and can provide precision balance at G2.5, made by request.
- ◎ Shank body standard: DIN69893-6.

·HSK32E-PHC 液压刀柄 HSK32E-PHC HYDRAULIC TOOL HOLDER



型号 Model	L	L1	L2	L3	L4	D	D1	D2	D3	d	最大插入深度 C Max. insertion depth	最少插入深度 C1 Min insertion depth	G	重量 KGS
HSK32E-PHC03-80	96	80	60	20	29	32	20	23	40	3	*	18	*	0.5
-PHC3.175-80	96	80	60	20	29	32	20	23	40	3.175	*	18	*	0.5
-PHC04-80	96	80	60	20	29	32	21	24	40	4	*	24	*	0.5
-PHC05-80	96	80	60	20	29	32	21	25	40	5	*	26	*	0.5
-PHC06-80	96	80	60	20	29	32	22	26	40	6	37	27	M5*0.8P	0.5
-PHC08-80	96	80	60	20	29	32	24	28	40	8	37	27	M6*1.0P	0.5
-PHC10-85	101	85	65	20	35	32	26	30	40	10	41	31	M6*1.0P	0.5
-PHC12-90	106	90	70	20	40	32	28	32	40	12	46	36	M6*1.0P	0.5

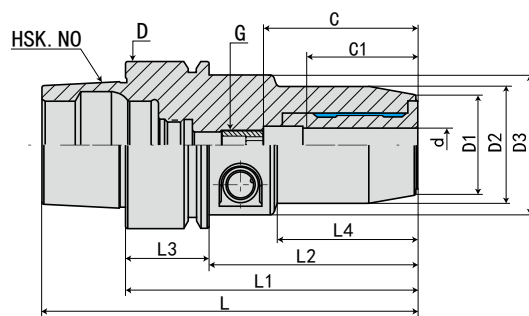
规格说明:



液压刀柄系列
HYDRAULIC CHUCKS SERIES

·HSK40E-PHC 液压刀柄

HSK40E-PHC HYDRAULIC TOOL HOLDER



型号 Model	L	L1	L2	L3	L4	D	D1	D2	D3	d	最大插入深度 C Max. insertion depth	最少插入深度 C1 Min insertion depth	G	重量 KGS
HSK40E-PHC03-70	90	70	50	20	36	40	20	23	33.5	3	*	18	*	0.5
-PHC3.175-70	90	70	50	20	36	40	20	23	33.5	3.175	*	18	*	0.5
-PHC4-70	90	70	50	20	36	40	21	24	33.5	4	*	24	*	0.5
-PHC05-70	90	70	50	20	36	40	21	25	33.5	5	*	26	*	0.5
-PHC06-70	90	70	50	20	36	40	22	26	33.5	6	37	27	M5*0.8P	0.5
-PHC08-70	90	70	50	20	36	40	24	28	33.5	8	37	27	M6*1.0P	0.5
-PHC10-75	95	75	55	20	42	40	26	30	33.5	10	41	31	M6*1.0P	0.5
-PHC12-80	100	80	60	20	48	40	28	32	33.5	12	46	36	M6*1.0P	0.6

规格说明:

HSK40E - PHC - 03 - 70

- L1 长度 Length (L1)
- 刀杆直径 Diameter
- 功能代号 Holder type
- 锥柄形式 Taper size

·HSK50E-PHC 液压刀柄

HSK50E-PHC HYDRAULIC TOOL HOLDER



FIG.1

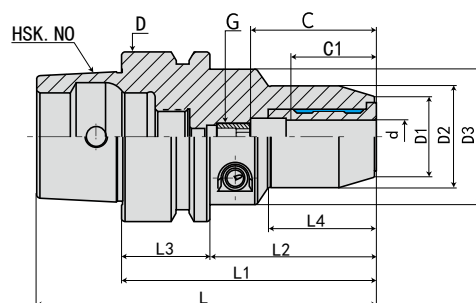
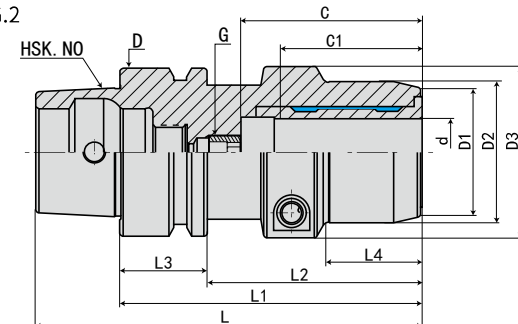
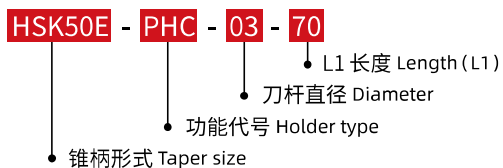


FIG.2



型号 Model	L	L1	L2	L3	L4	D	D1	D2	D3	d	最大插入深度 C Max. insertion depth	最少插入深度 C1 Min insertion depth	G	FIG	重量 KGS
HSK50E-PHC03-70	95	70	44	26	28	50	20	23	40	3	*	18	*	1	0.7
-PHC3.175-70	95	70	44	26	28	50	20	23	40	3.175	*	18	*	1	0.7
-PHC04-70	95	70	44	26	28	50	21	24	40	4	*	24	*	1	0.7
-PHC05-70	95	70	44	26	28	50	21	25	40	5	*	26	*	1	0.7
-PHC06-70	95	70	44	26	28	50	22	26	40	6	37	27	M5*0.8P	1	0.7
-PHC08-70	95	70	44	26	28	50	24	28	40	8	37	27	M6*1.0P	1	0.7
-PHC10-75	100	75	49	26	34	50	26	30	40	10	41	31	M8*1.0P	1	0.7
-PHC12-85	110	85	59	26	44	50	28	32	40	12	46	36	M10*1.0P	1	0.8
-PHC14-85	110	85	59	26	44	50	30	34	40	14	46	36	M10*1.0P	1	0.9
-PHC16-90	120	90	64	26	30	50	34	38	40	16	49	39	M10*1.0P	1	1
-PHC18-90	120	90	64	26	29	50	36	40	53	18	49	39	M10*1.0P	2	1.05
-PHC20-90	120	90	64	26	29	50	38	42	60	20	51	41	M10*1.0P	2	1.1

规格说明:



液压刀柄系列
HYDRAULIC CHUCKS SERIES

·HSK63E-PHC 液压刀柄

HSK63E-PHC HYDRAULIC TOOL HOLDER



FIG.1

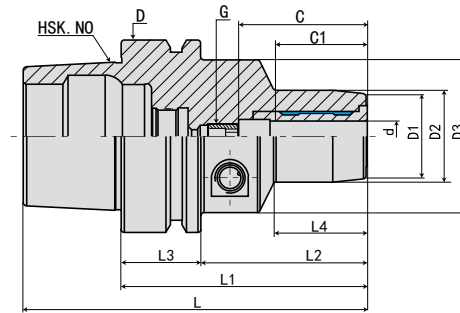
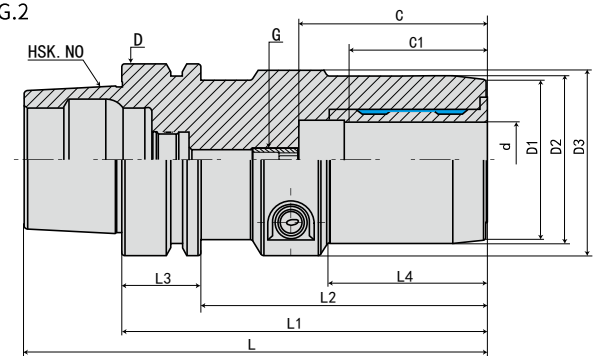


FIG.2



型号 Model	L	L1	L2	L3	L4	D	D1	D2	D3	d	最大插入深度 C Max. insertion depth	最少插入深度 C1 Min insertion depth	G	FIG	重量 KGS
HSK63E-PHC05- 70	102	70	44	26	24	63	21	25	50	5	*	26	*	1	1.1
-PHC06- 70	102	70	44	26	24	63	22	26	50	6	37	27	M5*0.8P	1	1.1
-PHC08- 70	102	70	44	26	24	63	24	28	50	8	37	27	M6*1.0P	1	1.1
-PHC10- 80	112	80	54	26	35	63	26	30	50	10	41	31	M8*1.0P	1	1.1
-PHC12- 85	117	85	59	26	40	63	28	32	50	12	46	36	M10*1.0P	1	1.2
-PHC14- 85	117	85	59	26	40	63	30	34	50	14	46	36	M10*1.0P	1	1.2
-PHC16- 90	122	90	64	26	46	63	34	38	50	16	49	39	M12*1.0P	1	1.3
-PHC18- 90	122	90	64	26	47	63	36	40	50	18	49	39	M12*1.0P	1	1.3
-PHC20- 90	122	90	64	26	48	63	38	42	50	20	51	41	M16*1.0P	1	1.3
-PHC25-120	152	120	94	26	59	63	53	57	63	25	57	47	M16*1.0P	2	2.3
-PHC32-125	157	125	99	26	63	63	60	64	75	32	61	51	M16*1.0P	2	2.8

规格说明:

- HSK63E - PHC - 05 - 70**
- 锥柄形式 Taper size
 - 功能代号 Holder type
 - 刀杆直径 Diameter
 - L1 长度 Length (L1)

·HSK63F-PHC 液压刀柄

HSK63F-PHC HYDRAULIC TOOL HOLDER



FIG.1

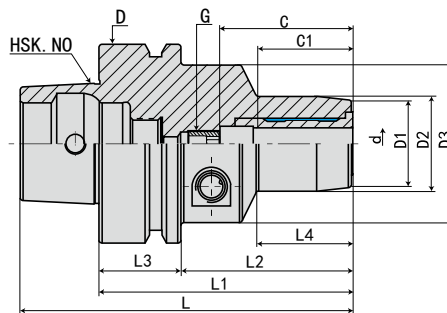
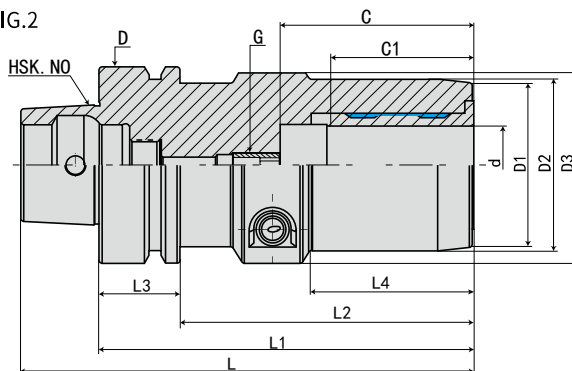


FIG.2



型号 Model	L	L1	L2	L3	L4	D	D1	D2	D3	d	最大插入深度 C Max. insertion depth	最少插入深度 C1 Min insertion depth	G	FIG	重量 KGS
HSK63F-PHC05- 70	95	70	44	26	24	63	21	25	50	5	*	26	*	1	1
-PHC06- 70	95	70	44	26	24	63	22	26	50	6	37	27	M5*0.8P	1	1
-PHC08- 70	95	70	44	26	24	63	24	28	50	8	37	27	M6*1.0P	1	1
-PHC10- 80	105	80	54	26	35	63	26	30	50	10	41	31	M8*1.0P	1	1.1
-PHC12- 85	110	85	59	26	40	63	28	32	50	12	46	36	M10*1.0P	1	1.1
-PHC14- 85	110	85	59	26	40	63	30	34	50	14	46	36	M10*1.0P	1	1.2
-PHC16- 90	115	90	64	26	46	63	34	38	50	16	49	39	M12*1.0P	1	1.2
-PHC18- 90	115	90	64	26	47	63	36	40	50	18	49	39	M12*1.0P	1	1.4
-PHC20- 90	115	90	64	26	48	63	38	42	50	20	51	41	M16*1.0P	1	1.4
-PHC25-120	145	120	94	26	59	63	53	57	53	25	57	47	M16*1.0P	2	2.1
-PHC32-125	150	125	99	26	63	63	60	64	53	32	61	51	M16*1.0P	2	2.2

规格说明:

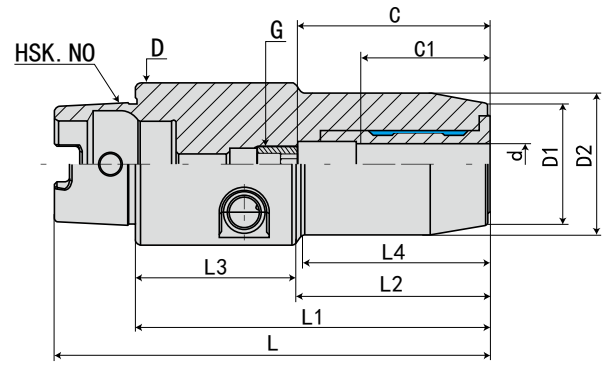
HSK63F - PHC - 05 - 70

- L1 长度 Length (L1)
- 刀杆直径 Diameter
- 功能代号 Holder type
- 锥柄形式 Taper size

液压刀柄系列
HYDRAULIC CHUCKS SERIES

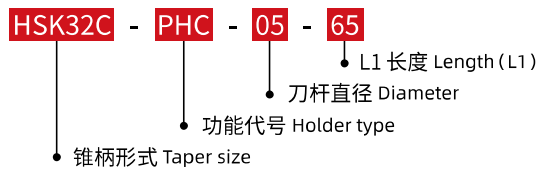
·HSK32C-PHC 液压刀柄

HSK32C-PHC HYDRAULIC TOOL HOLDER



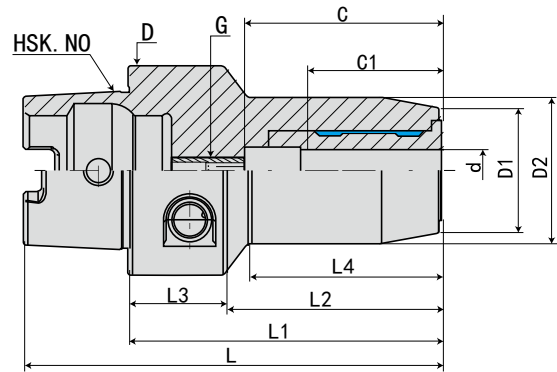
型号 Model	L	L1	L2	L3	L4	D	D1	D2	D3	d	最大插入深度 C Max. insertion depth	最少插入深度 C1 Min insertion depth	G	重量 KGS
HSK32C-PHC05-65	81	65	45	20	29	32	21	25	5	*	26	*	0.5	
-PHC06-65	81	65	45	20	29	32	22	26	40	6	37	27	M5*0.8P	0.5
-PHC08-70	86	70	50	20	29	32	24	28	40	8	37	27	M6*1.0P	0.5
-PHC10-75	91	75	55	20	35	32	26	30	40	10	41	31	M6*1.0P	0.5
-PHC12-80	96	80	60	20	40	32	28	32	40	12	46	36	M6*1.0P	0.5

规格说明:



·HSK40C-PHC 液压刀柄

HSK40C-PHC HYDRAULIC TOOL HOLDER


 液压刀柄系列
 HYDRAULIC CHUCKS SERIES

型号 Model	L	L1	L2	L3	L4	D	D1	D2	d	最大插入深度 C Max. insertion depth	最少插入深度 C1 Min insertion depth	G	重量 KGS
HSK40C-PHC05-60	80	60	40	20	35	40	21	25	5	*	26	*	0.4
-PHC06-60	80	60	40	20	35	40	22	26	6	37	27	M5*0.8P	0.4
-PHC08-60	80	60	40	20	36	40	24	28	8	37	27	M6*1.0P	0.4
-PHC10-65	85	65	45	20	41	40	26	30	10	41	31	M6*1.0P	0.5
-PHC12-70	90	70	50	20	47	40	28	32	12	46	36	M6*1.0P	0.5

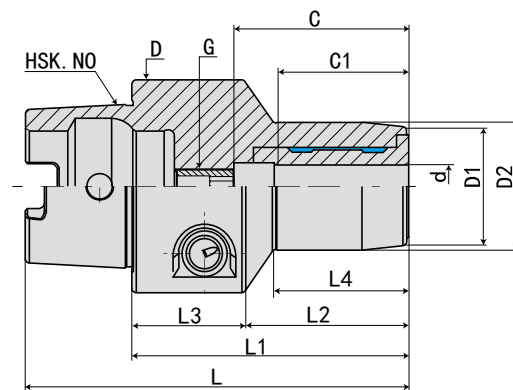
规格说明:

HSK40C - PHC - 05 - 60

- L1 长度 Length (L1)
- 刀杆直径 Diameter
- 功能代号 Holder type
- 锥柄形式 Taper size

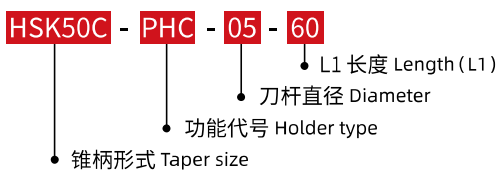
·HSK50C-PHC 液压刀柄

HSK50C-PHC HYDRAULIC TOOL HOLDER



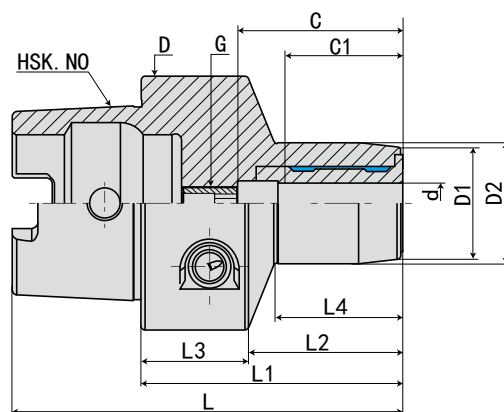
型号 Model	L	L1	L2	L3	L4	D	D1	D2	d	最大插入深度 C Max. insertion depth	最少插入深度 C1 Min insertion depth	G	重量 KGS
HSK50C-PHC05-60	85	60	34	26	30	50	21	25	5	*	26	*	0.6
-PHC06-60	85	60	34	26	30	50	22	26	6	37	27	M5*0.8P	0.6
-PHC08-60	85	60	34	26	30	50	24	28	8	37	27	M6*1.0P	0.6
-PHC10-65	90	65	39	26	35	50	26	30	10	41	31	M8*1.0P	0.7
-PHC12-75	100	75	49	26	40	50	28	32	12	46	36	M10*1.0P	0.7
-PHC14-75	100	75	49	26	40	50	30	34	14	46	36	M10*1.0P	0.7
-PHC16-80	105	80	54	26	50	50	34	38	16	49	39	M12*1.0P	0.8
-PHC18-80	105	80	54	26	50	50	36	40	18	49	39	M12*1.0P	0.9
-PHC20-80	105	80	54	26	50	50	38	42	20	51	41	M16*1.0P	0.9

规格说明:



·HSK63C-PHC 液压刀柄

HSK63C-PHC HYDRAULIC TOOL HOLDER


 液压刀柄系列
 HYDRAULIC CHUCKS SERIES

型号 Model	L	L1	L2	L3	L4	D	D1	D2	d	最大插入深度 C Max. insertion depth	最少插入深度 C1 Min insertion depth	G	重量 KGS
HSK63C-PHC05- 60	92	60	34	26	25	63	21	25	5	*	26	*	0.9
-PHC06- 60	92	60	34	26	25	63	22	26	6	37	27	M5*0.8P	0.9
-PHC08- 60	92	60	34	26	25	63	24	28	8	37	27	M6*1.0P	0.9
-PHC10- 65	97	65	39	26	31	63	26	30	10	41	31	M8*1.0P	1
-PHC12- 75	107	75	49	26	41	63	28	32	12	46	36	M10*1.0P	1
-PHC14- 75	107	75	49	26	42	63	30	34	14	46	36	M10*1.0P	1.1
-PHC16- 80	112	80	54	26	48	63	34	38	16	49	39	M12*1.0P	1.1
-PHC18- 80	112	80	54	26	48	63	36	40	18	49	39	M12*1.0P	1.2
-PHC20- 80	112	80	54	26	49	63	38	42	20	51	41	M16*1.0P	1.2
-PHC25- 95	127	95	69	26	63	63	53	57	25	57	47	M16*1.0P	1.8
-PHC32-100	132	100	74	26	60	63	59	63	32	61	51	M16*1.0P	2

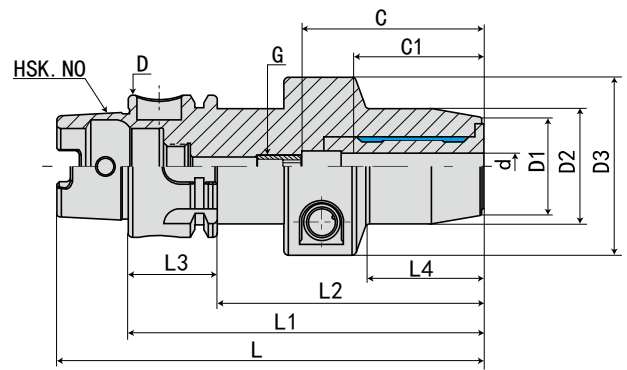
规格说明:

HSK63C - PHC - 05 - 60

- L1 长度 Length (L1)
- 刀杆直径 Diameter
- 功能代号 Holder type
- 锥柄形式 Taper size

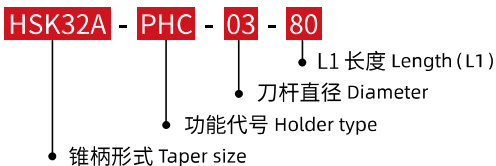
·HSK32A-PHC 液压刀柄

HSK32A-PHC HYDRAULIC TOOL HOLDER



型号 Model	L	L1	L2	L3	L4	D	D1	D2	D3	d	最大插入深度 C Max. insertion depth	最少插入深度 C1 Min insertion depth	G	重量 KGS
HSK32A-PHC03-80	96	80	60	20	29	32	20	23	40	3	*	18	*	0.5
-PHC3.175-80	96	80	60	20	29	32	20	23	40	3.175	*	18	*	0.5
-PHC04-80	96	80	60	20	29	32	21	24	40	4	*	24	*	0.5
-PHC05-80	96	80	60	20	29	32	21	25	40	5	*	26	*	0.5
-PHC06-80	96	80	60	20	29	32	22	26	40	6	37	27	M5*0.8P	0.5
-PHC08-80	96	80	60	20	29	32	24	28	40	8	37	27	M6*1.0P	0.5
-PHC10-85	101	85	65	20	35	32	26	30	40	10	41	31	M6*1.0P	0.5
-PHC12-90	106	90	70	20	40	32	28	32	40	12	46	36	M6*1.0P	0.5

规格说明:



·HSK40A-PHC 液压刀柄

HSK40A-PHC HYDRAULIC TOOL HOLDER



FIG.1

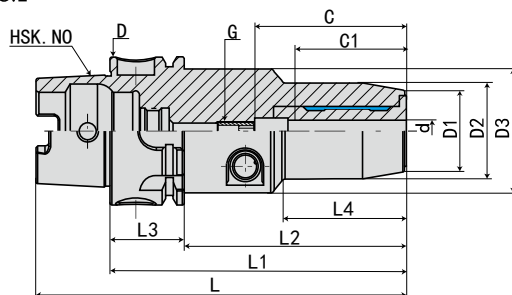
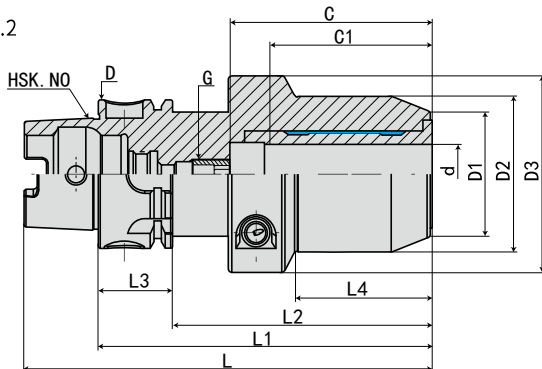
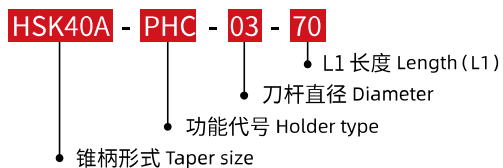


FIG.2



型号 Model	L	L1	L2	L3	L4	D	D1	D2	D3	d	最大插入深度 C Max. insertion depth	最少插入深度 C1 Min insertion depth	G	FIG	重量 KGS
HSK40A-PHC03- 70	90	70	50	20	36	40	20	23	33.5	3	*	18	*	1	0.4
-PHC3.175-70	90	70	50	20	36	40	20	23	33.5	3.175	*	18	*	1	0.4
-PHC04- 70	90	70	50	20	36	40	21	24	33.5	4	*	24	*	1	0.4
-PHC05- 70	90	70	50	20	36	40	21	25	33.5	5	*	26	*	1	0.4
-PHC06- 70	90	70	50	20	36	40	22	26	33.5	6	37	27	M5*0.8P	1	0.4
-PHC08- 70	90	70	50	20	36	40	24	28	33.5	8	37	27	M6*1.0P	1	0.5
-PHC10- 75	95	75	55	20	42	40	26	30	33.5	10	41	31	M6*1.0P	1	0.5
-PHC12- 80	100	80	60	20	48	40	28	32	33.5	12	46	36	M6*1.0P	1	0.5
-PHC14- 85	105	85	65	20	32	40	30	34	53	14	46	36	M8*1.0P	2	0.7
-PHC16- 90	110	90	70	20	37	40	34	38	53	16	49	39	M8*1.0P	2	0.8
-PHC18- 95	115	95	75	20	42	40	36	40	53	18	49	39	M8*1.0P	2	0.8
-PHC20-100	120	100	80	20	47	40	38	42	53	20	51	41	M8*1.0P	2	1

规格说明:



液压刀柄系列
HYDRAULIC CHUCKS SERIES

·HSK50A-PHC 液压刀柄

HSK50A-PHC HYDRAULIC TOOL HOLDER



FIG.1

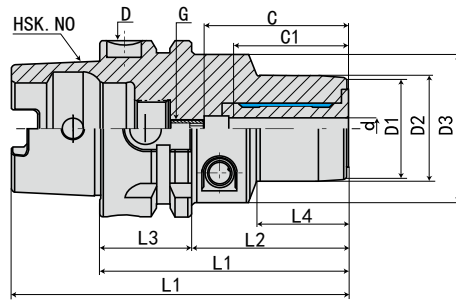
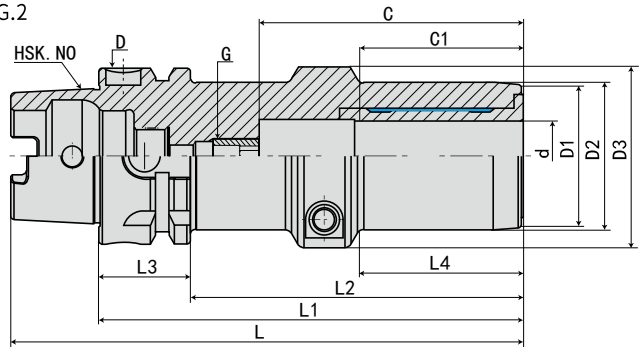
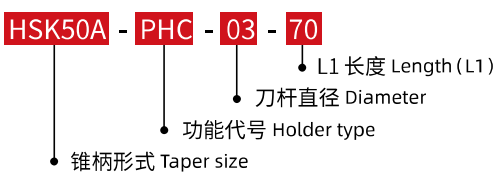


FIG.2



型号 Model	L	L1	L2	L3	L4	D	D1	D2	D3	d	最大插入深度 C Max. insertion depth	最少插入深度 C1 Min insertion depth	G	FIG	重量 KGS
HSK50A-PHC03- 70	95	70	44	26	28	50	20	23	40	3	*	18	*	1	0.7
-PHC3.175- 70	95	70	44	26	28	50	20	23	40	3.175	*	18	*	1	0.7
-PHC04- 70	95	70	44	26	28	50	21	24	40	4	*	24	*	1	0.7
-PHC05- 70	95	70	44	26	28	50	21	25	40	5	*	26	*	1	0.7
-PHC06- 70	95	70	44	26	28	50	22	26	40	6	37	27	M5*0.8P	1	0.7
-PHC08- 70	95	70	44	26	28	50	24	28	40	8	37	27	M6*1.0P	1	0.7
-PHC10- 75	100	75	49	26	34	50	26	30	40	10	41	31	M8*1.0P	1	0.7
-PHC12- 85	110	85	59	26	44	50	28	32	40	12	46	36	M10*1.0P	1	0.8
-PHC14- 85	110	85	59	26	44	50	30	34	40	14	46	36	M10*1.0P	1	0.8
-PHC16- 90	115	90	64	26	30	50	34	38	53	16	49	39	M10*1.0P	2	1.1
-PHC18- 90	115	90	64	26	30	50	36	40	57	18	49	39	M10*1.0P	2	1.1
-PHC20- 90	115	90	64	26	29	50	38	42	60	20	51	41	M10*1.0P	2	1.1
-PHC25-100	125	100	74	26	43	50	53	57	63	25	57	47	M10*1.0P	2	1.9
-PHC32-110	135	110	84	26	46	50	59	63	67	32	61	51	M10*1.0P	2	2.1

规格说明:



·HSK63A-PHC 液压刀柄

HSK63A-PHC HYDRAULIC TOOL HOLDER



FIG.1

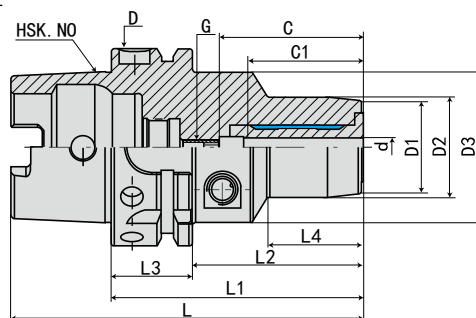
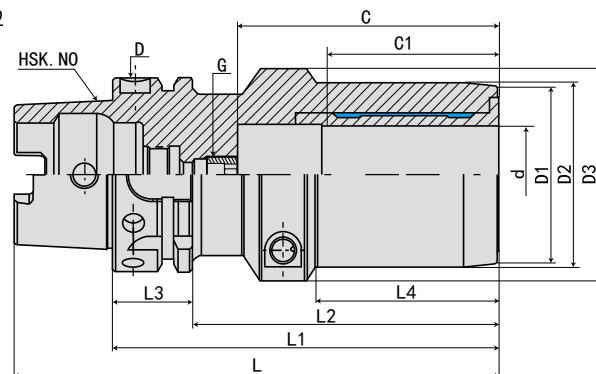


FIG.2



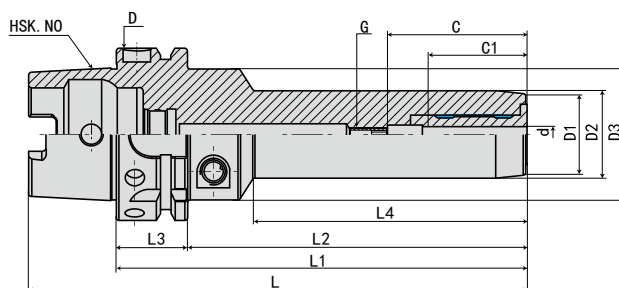
型号 Model	L	L1	L2	L3	L4	D	D1	D2	D3	d	最大插入深度 C Max. insertion depth	最少插入深度 C1 Min insertion depth	G	FIG	重量 KGS
HSK63A-PHC03- 70	102	70	44	26	24	63	20	23	50	3	*	18	*	1	1
-PHC03.175- 70	102	70	44	26	24	63	20	23	50	3.175	*	18	*	1	1
-PHC04- 70	102	70	44	26	24	63	21	24	50	4	*	24	*	1	1
-PHC05- 70	102	70	44	26	24	63	21	25	50	5	*	26	*	1	1
-PHC06- 70	102	70	44	26	24	63	22	26	50	6	37	27	M5*0.8P	1	1
-PHC08- 70	102	70	44	26	24	63	24	28	50	8	37	27	M6*1.0P	1	1
-PHC10- 80	112	80	54	26	35	63	26	30	50	10	41	31	M8*1.0P	1	1.1
-PHC12- 85	117	85	59	26	40	63	28	32	50	12	46	36	M10*1.0P	1	1.1
-PHC14- 85	117	85	59	26	40	63	30	34	50	14	46	36	M10*1.0P	1	1.1
-PHC16- 90	122	90	64	26	46	63	34	38	50	16	49	39	M12*1.0P	1	1.2
-PHC18- 90	122	90	64	26	47	63	36	40	50	18	49	39	M12*1.0P	1	1.3
-PHC20- 90	122	90	64	26	48	63	38	42	50	20	51	41	M16*1.0P	1	1.3
-PHC25-120	152	120	94	26	63	63	53	57	63	25	57	47	M16*1.0P	2	2.16
-PHC32-125	157	125	99	26	61	63	59	63	69	32	61	51	M16*1.0P	2	2.7
-PHC40-140	172	140	114	26	65	63	67	71	74	40			M16*1.0P	2	3.2
-PHC42-140	172	140	114	26	65	63	69	73	74	42			M16*1.0P	2	3.2

规格说明:

HSK63A - PHC - 03 - 70

- L1 长度 Length (L1)
- 刀杆直径 Diameter
- 功能代号 Holder type
- 锥柄形式 Taper size

·HSK63A-JPHC 液压刀柄 HSK63A-JPHC HYDRAULIC TOOL HOLDER



型号 Model	L	L1	L2	L3	L4	D	D1	D2	D3	d	最大插入深度 C Max. insertion depth	最少插入深度 C1 Min insertion depth	G	重量 KGS
HSK63A-JPHC05-120	152	120	94	26	73	63	21	25	50	5	*	26	*	1.2
-150	182	150	124	26	103	63	21	25	50	5	*	26	*	1.7
-200	232	200	174	26	153	63	21	25	50	5	*	26	*	1.9
-250	282	250	224	26	203	63	21	25	50	5	*	26	*	2.1
HSK63A-JPHC06-120	152	120	94	26	73	63	22	26	50	6	37	27	M5*0.8P	1.2
-150	182	150	124	26	103	63	22	26	50	6	37	27	M5*0.8P	1.7
-200	232	200	174	26	153	63	22	26	50	6	37	27	M5*0.8P	1.9
-250	282	250	224	26	203	63	22	26	50	6	37	27	M5*0.8P	2.1
-JPHC08-120	152	120	94	26	74	63	24	28	50	8	37	27	M6*1.0P	1.2
-150	182	150	124	26	104	63	24	28	50	8	37	27	M6*1.0P	1.7
-200	232	200	174	26	154	63	24	28	50	8	37	27	M6*1.0P	1.9
-250	282	250	224	26	204	63	24	28	50	8	37	27	M6*1.0P	2.1
-JPHC10-120	152	120	94	26	74	63	26	30	50	10	41	31	M8*1.0P	1.2
-150	182	150	124	26	104	63	26	30	50	10	41	31	M8*1.0P	1.7
-200	232	200	174	26	154	63	26	30	50	10	41	31	M8*1.0P	1.9
-250	282	250	224	26	204	63	26	30	50	10	41	31	M8*1.0P	2.1
-JPHC12-120	152	120	94	26	75	63	28	32	50	12	46	36	M10*1.0P	1.3
-150	182	150	124	26	105	63	28	32	50	12	46	36	M10*1.0P	1.7
-200	232	200	174	26	155	63	28	32	50	12	46	36	M10*1.0P	1.9
-250	282	250	224	26	204	63	28	32	50	12	46	36	M10*1.0P	2.2
-JPHC14-120	152	120	94	26	75	63	30	34	50	14	46	36	M10*1.0P	1.3
-150	182	150	124	26	105	63	30	34	50	14	46	36	M10*1.0P	1.7
-200	232	200	174	26	155	63	30	34	50	14	46	36	M10*1.0P	1.9
-250	282	250	224	26	204	63	30	34	50	14	46	36	M10*1.0P	2.2
-JPHC16-120	152	120	94	26	76	63	34	38	50	16	49	39	M12*1.0P	1.4
-150	182	150	124	26	106	63	34	38	50	16	49	39	M12*1.0P	2
-200	232	200	174	26	156	63	34	38	50	16	49	39	M12*1.0P	2.3
-250	282	250	224	26	206	63	34	38	50	16	49	39	M12*1.0P	2.6
-JPHC18-120	152	120	94	26	77	63	36	40	50	18	49	39	M12*1.0P	1.5
-150	182	150	124	26	107	63	36	40	50	18	49	39	M12*1.0P	2.1
-200	232	200	174	26	157	63	36	40	50	18	49	39	M12*1.0P	2.4
-250	282	250	224	26	207	63	36	40	50	18	49	39	M12*1.0P	2.7
-JPHC20-120	152	120	94	26	78	63	38	42	50	20	51	41	M16*1.0P	1.5
-150	182	150	124	26	108	63	38	42	50	20	51	41	M16*1.0P	2.1
-200	232	200	174	26	158	63	38	42	50	20	51	41	M16*1.0P	2.4
-250	282	250	224	26	208	63	38	42	50	20	51	41	M16*1.0P	2.7

规格说明:

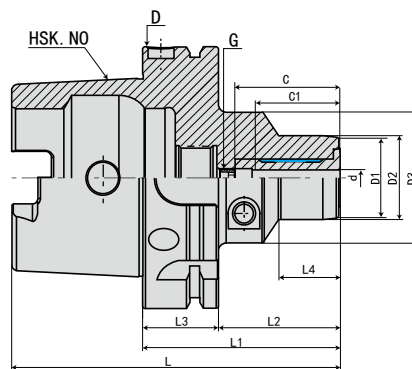
HSK63A - JPHC - 05 - 120

- L1 长度 Length (L1)
- 刀杆直径 Diameter
- 功能代号 Holder type
- 锥柄形式 Taper size



·HSK80A-PHC 液压刀柄

HSK80A-PHC HYDRAULIC TOOL HOLDER



型号 Model	L	L1	L2	L3	L4	D	D1	D2	D3	d	最大插入深度 C Max. insertion depth	最少插入深度 C1 Min insertion depth	G	重量 KGS
HSK80A-PHC05- 70	110	70	44	26	24	80	21	25	50	5	*	26	*	1.4
-PHC06- 70	110	70	44	26	24	80	22	26	50	6	37	27	M5*0.8P	1.4
-PHC08- 70	110	70	44	26	24	80	24	28	50	8	37	27	M6*1.0P	1.4
-PHC10- 80	120	80	54	26	35	80	26	30	50	10	41	31	M8*1.0P	1.5
-PHC12- 85	125	85	59	26	40	80	28	32	50	12	46	36	M10*1.0P	1.6
-PHC14- 85	125	85	59	26	40	80	30	34	50	14	46	36	M10*1.0P	1.6
-PHC16- 95	135	95	69	26	51	80	34	38	50	16	49	39	M12*1.0P	1.6
-PHC18- 95	135	95	69	26	51	80	36	40	50	18	49	39	M12*1.0P	1.7
-PHC20- 95	135	95	69	26	51	80	38	42	50	20	51	41	M16*1.0P	1.7
-PHC25-110	150	110	84	26	65	80	53	57	63	25	57	47	M16*1.0P	2.6
-PHC32-125	165	125	99	26	63	80	59	63	75	32	61	51	M16*1.0P	3.1
-PHC40-140	180	140	114	26		80			75	40			M16*1.0P	3.8
-PHC42-140	180	140	114	26		80			75	42			M16*1.0P	3.8

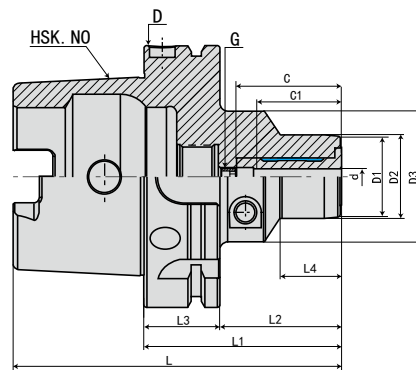
规格说明:

HSK80A - PHC - 05 - 70

- L1 长度 Length (L1)
- 刀杆直径 Diameter
- 功能代号 Holder type
- 锥柄形式 Taper size

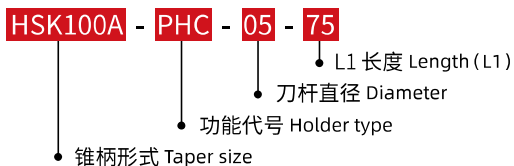
·HSK100A-PHC 液压刀柄

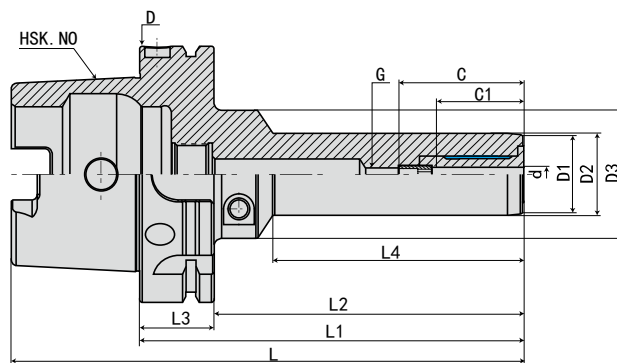
HSK100A-PHC HYDRAULIC TOOL HOLDER



型号 Model	L	L1	L2	L3	L4	D	D1	D2	D3	d	最大插入深度 C Max. insertion depth	最少插入深度 C1 Min insertion depth	G	重量 KGS
HSK100A-PHC05- 75	125	75	46	29	26	100	21	25	50	5	*	26	*	2.3
-PHC06- 75	125	75	46	29	26	100	22	26	50	6	37	27	M5*0.8P	2.3
-PHC08- 75	125	75	46	29	26	100	24	28	50	8	37	27	M6*1.0P	2.3
-PHC10- 90	140	90	61	29	42	100	26	30	50	10	41	31	M8*1.0P	2.5
-PHC12- 95	145	95	66	29	47	100	28	32	50	12	46	36	M10*1.0P	2.5
-PHC14- 95	145	95	66	29	47	100	30	34	50	14	46	36	M10*1.0P	2.5
-PHC16-100	150	100	71	29	53	100	34	38	50	16	49	39	M12*1.0P	2.6
-PHC18-100	150	100	71	29	53	100	36	40	50	18	49	39	M12*1.0P	2.6
-PHC20-105	155	105	76	29	59	100	38	42	50	20	51	41	M16*1.0P	2.7
-PHC25-110	160	110	81	29	62	100	53	57	63	25	57	47	M16*1.0P	3.3
-PHC32-110	160	110	81	29	62	100	59	63	75	32	61	51	M16*1.0P	3.5
-PHC40-140	190	140	111	29		100				40			M16*1.0P	4
-PHC42-140	190	140	111	29		100				42			M16*1.0P	4
-PHC50-				29		100				50			M16*1.0P	5

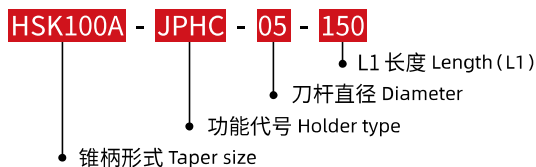
规格说明:



·HSK100A-JPHC 液压刀柄 HSK100A-JPHC HYDRAULIC TOOL HOLDER

 液压刀柄系列
 HYDRAULIC CHUCKS SERIES

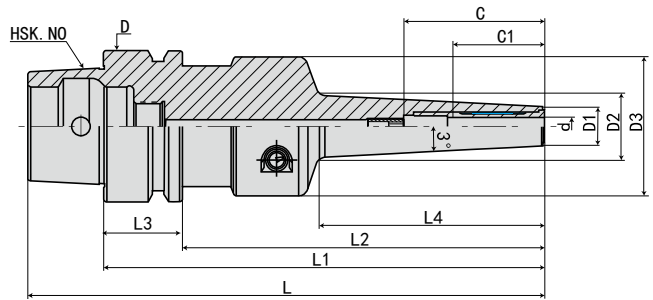
型号 Model	L	L1	L2	L3	L4	D	D1	D2	D3	d	最大插入深度 C Max. insertion depth	最少插入深度 C1 Min insertion depth	G	重量 KGS
HSK100A-JPHC05-150	200	150	121	29	101	100	21	25	50	5	*	26	*	2.6
-200	250	200	171	29	151	100	21	25	50	5	*	26	*	2.8
-250	300	250	221	29	201	100	21	25	50	5	*	26	*	3.1
HSK100A-JPHC06-150	200	150	121	29	101	100	22	26	50	6	37	27	M5*0.8P	2.6
-200	250	200	171	29	151	100	22	26	50	6	37	27	M5*0.8P	2.8
-250	300	250	221	29	201	100	22	26	50	6	37	27	M5*0.8P	3.1
-JPHC08-150	200	150	121	29	101	100	24	28	50	8	37	27	M6*1.0P	2.6
-200	250	200	171	29	151	100	24	28	50	8	37	27	M6*1.0P	2.8
-250	300	250	221	29	201	100	24	28	50	8	37	27	M6*1.0P	3.1
-JPHC10-150	200	150	121	29	102	100	26	30	50	10	41	31	M8*1.0P	2.9
-200	250	200	171	29	152	100	26	30	50	10	41	31	M8*1.0P	3.2
-250	300	250	221	29	202	100	26	30	50	10	41	31	M8*1.0P	3.5
-JPHC12-150	200	150	121	29	102	100	28	32	50	12	46	36	M10*1.0P	2.9
-200	250	200	171	29	152	100	28	32	50	12	46	36	M10*1.0P	3.2
-250	300	250	221	29	202	100	28	32	50	12	46	36	M10*1.0P	3.5
-JPHC14-150	200	150	121	29	102	100	30	34	50	14	46	36	M10*1.0P	2.9
-200	250	200	171	29	152	100	30	34	50	14	46	36	M10*1.0P	3.2
-250	300	250	221	29	202	100	30	34	50	14	46	36	M10*1.0P	3.5
-JPHC16-150	200	150	121	29	103	100	34	38	50	16	49	39	M12*1.0P	3.1
-200	250	200	171	29	153	100	34	38	50	16	49	39	M12*1.0P	3.6
-250	300	250	221	29	203	100	34	38	50	16	49	39	M12*1.0P	4.1
-JPHC18-150	200	150	121	29	103	100	36	40	50	18	49	39	M12*1.0P	3.1
-200	250	200	171	29	153	100	36	40	50	18	49	39	M12*1.0P	3.6
-250	300	250	221	29	203	100	36	40	50	18	49	39	M12*1.0P	4.1
-JPHC20-150	200	150	121	29	104	100	38	42	50	20	51	41	M16*1.0P	3.2
-200	250	200	171	29	154	100	38	42	50	20	51	41	M16*1.0P	3.7
-250	300	250	221	29	204	100	38	42	50	20	51	41	M16*1.0P	4.2

规格说明:



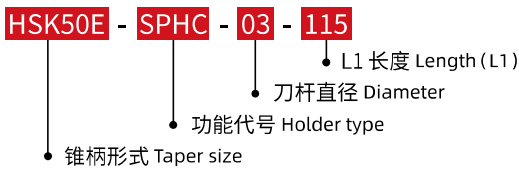
·HSK50E-SPHC 液压刀柄

HSK50E-SPHC HYDRAULIC TOOL HOLDER



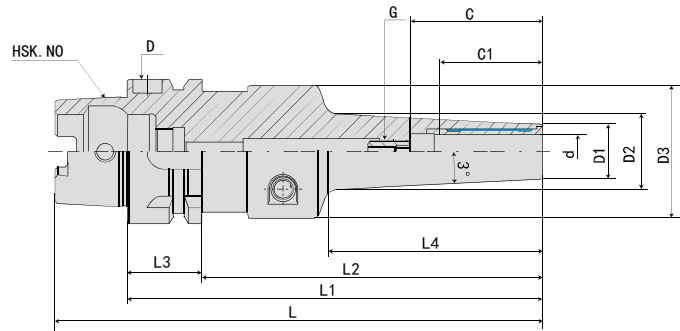
型号 Model	L	L1	L2	L3	L4	D	D1	D2	D3	d	最大插入深度 C Max. insertion depth	最少插入深度 C1 Min insertion depth	G	重量 KGS
HSK50E-SPHC03-115	140	115	89	26	42	50	11		46	3	*	18	*	0.6
-SPHC04-115	140	115	89	26	42	50	11		46	4	*	24	*	0.6
-SPHC05-115	140	115	89	26	42	50	12		46	5	*	26	*	0.6
-SPHC06-145	170	145	119	26	74	50	13		46	6	37	27	M5*0.8P	1.1
-SPHC08-145	170	145	119	26	74	50	15		46	8	37	27	M6*1.0P	1.1
-SPHC10-145	170	145	119	26	74	50	17		46	10	41	31	M8*1.0P	1.1
-SPHC12-145	170	145	119	26	75	50	19		46	12	46	36	M10*1.0P	1.1

规格说明:



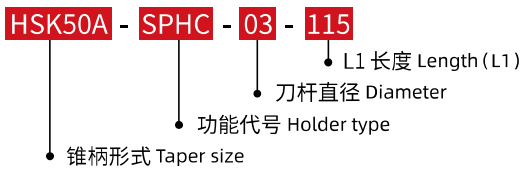
·HSK50A-SPHC 液压刀柄

HSK50A-SPHC HYDRAULIC TOOL HOLDER



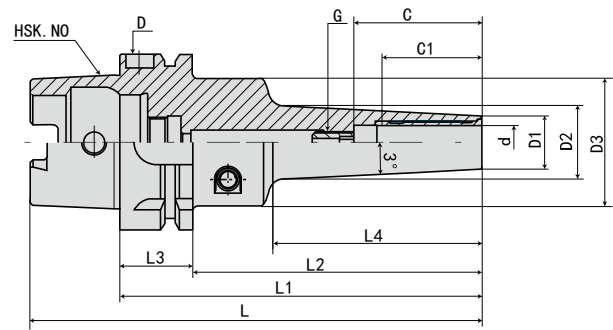
型号 Model	L	L1	L2	L3	L4	D	D1	D2	D3	d	最大插入深度 C Max. insertion depth	最少插入深度 C1 Min insertion depth	G	重量 KGS
HSK50A-SPHC03-115	140	115	89	26	42	50	11		46	3	*	18	*	0.6
-SPHC04-115	140	115	89	26	42	50	11		46	4	*	24	*	0.6
-SPHC05-115	140	115	89	26	42	50	12		46	5	*	26	*	0.6
-SPHC06-145	170	145	119	26	74	50	13		46	6	37	27	M5*0.8P	1.1
-SPHC08-145	170	145	119	26	74	50	15		46	8	37	27	M6*1.0P	1.1
-SPHC10-145	170	145	119	26	74	50	17		46	10	41	31	M8*1.0P	1.1
-SPHC12-145	170	145	119	26	75	50	19		46	12	46	36	M10*1.0P	1.1

规格说明:



·HSK63A-SPHC 液压刀柄

HSK63A-SPHC HYDRAULIC TOOL HOLDER

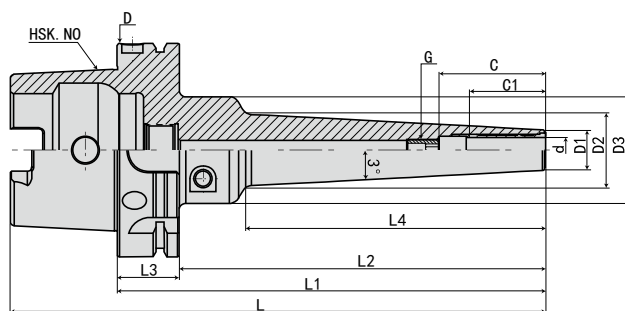


型号 Model	L	L1	L2	L3	L4	D	D1	D2	D3	d	最大插入深度 C Max. insertion depth	最少插入深度 C1 Min insertion depth	G	重量 KGS
HSK63A-SPHC03-100	132	100	74	26	42	63	11		46	3	*	18	*	0.9
-130	162	130	104	26	72	63	11		46	3	*	18	*	1
-SPHC04-100	132	100	74	26	42	63	11		46	4	*	24	*	0.9
-130	162	130	104	26	72	63	11		46	4	*	24	*	1
-SPHC05-100	132	100	74	26	42	63	12		46	5	*	26	*	0.9
-130	162	130	104	26	72	63	12		46	5	*	26	*	1
-SPHC06-130	162	130	104	26	74	63	13		46	6	37	27	M5*0.8P	1.2
-160	192	160	134	26	104	63	13		46	6	37	27	M5*0.8P	1.3
-200	232	200	174	26	144	63	13		46	6	37	27	M5*0.8P	1.4
-SPHC08-130	162	130	104	26	74	63	15		46	8	37	27	M6*1.0P	1.2
-160	192	160	134	26	104	63	15		46	8	37	27	M6*1.0P	1.3
-200	232	200	174	26	144	63	15		46	8	37	27	M6*1.0P	1.4
-SPHC10-130	162	130	104	26	74	63	17		46	10	41	31	M8*1.0P	1.2
-160	192	160	134	26	104	63	17		46	10	41	31	M8*1.0P	1.3
-200	232	200	174	26	144	63	17		46	10	41	31	M8*1.0P	1.4
-SPHC12-130	162	130	104	26	75	63	19		46	12	46	36	M10*1.0P	1.2
-160	192	160	134	26	105	63	19		46	12	46	36	M10*1.0P	1.3
-200	232	200	174	26	145	63	19		46	12	46	36	M10*1.0P	1.4
-SPHC14-130	162	130	104	26	75	63	21		46	14	46	36	M10*1.0P	1.3
-160	192	160	134	26	105	63	21		46	14	46	36	M10*1.0P	1.4
-200	232	200	174	26	145	63	21		46	14	46	36	M10*1.0P	1.5
-SPHC16-130	162	130	104	26	76	63	23		50	16	49	39	M12*1.0P	1.3
-160	192	160	134	26	106	63	23		50	16	49	39	M12*1.0P	1.4
-200	232	200	174	26	146	63	23		50	16	49	39	M12*1.0P	1.5
-SPHC18-130	162	130	104	26	76	63	25		50	18	49	39	M12*1.0P	1.4
-160	192	160	134	26	106	63	25		50	18	49	39	M12*1.0P	1.5
-200	232	200	174	26	146	63	25		50	18	49	39	M12*1.0P	1.6
-SPHC20-130	162	130	104	26	77	63	27		50	20	51	41	M16*1.0P	1.4
-160	192	160	134	26	107	63	27		50	20	51	41	M16*1.0P	1.5
-200	232	200	174	26	147	63	27		50	20	51	41	M16*1.0P	1.6

规格说明:

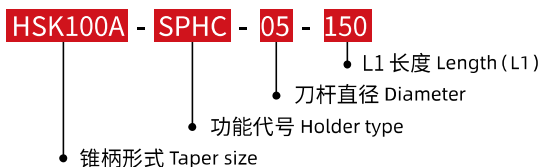
HSK63A - SPHC - 03 - 100

- L1 长度 Length (L1)
- 刀杆直径 Diameter
- 功能代号 Holder type
- 锥柄形式 Taper size

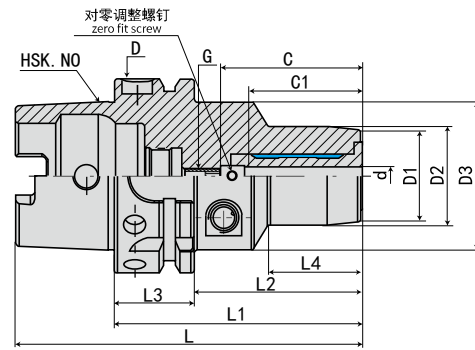
·HSK100A-SPHC 液压刀柄 HSK100A-SPHC HYDRAULIC TOOL HOLDER


型号 Model	L	L1	L2	L3	L4	D	D1	D2	D3	d	最大插入深度 C Max. insertion depth	最少插入深度 C1 Min insertion depth	G	重量 KGS
HSK100A-SPHC05-150	200	150	121	29	90	100	12		50	5	*	26	*	2.9
-200	250	200	171	29	140	100	12		50	5	*	26	*	3.1
-250	300	250	221	29	190	100	12		50	5	*	26	*	3.3
-300	350	300	271	29	240	100	12		50	5	*	26	*	3.5
-SPHC06-150	200	150	121	29	90	100	13		50	6	37	27	M5*0.8P	2.9
-200	250	200	171	29	140	100	13		50	6	37	27	M5*0.8P	3.1
-250	300	250	221	29	190	100	13		50	6	37	27	M5*0.8P	3.3
-300	350	300	271	29	240	100	13		50	6	37	27	M5*0.8P	3.5
-SPHC08-150	200	150	121	29	90	100	15		50	8	37	27	M6*1.0P	2.9
-200	250	200	171	29	140	100	15		50	8	37	27	M6*1.0P	3.1
-250	300	250	221	29	190	100	15		50	8	37	27	M6*1.0P	3.3
-300	350	300	271	29	240	100	15		50	8	37	27	M6*1.0P	3.5
-SPHC10-150	200	150	121	29	90	100	17		50	10	41	31	M8*1.0P	2.9
-200	250	200	171	29	140	100	17		50	10	41	31	M8*1.0P	3.1
-250	300	250	221	29	190	100	17		50	10	41	31	M8*1.0P	3.3
-300	350	300	271	29	240	100	17		50	10	41	31	M8*1.0P	3.5
-SPHC12-150	200	150	121	29	90	100	19		50	12	46	36	M10*1.0P	3
-200	250	200	171	29	140	100	19		50	12	46	36	M10*1.0P	3.2
-250	300	250	221	29	190	100	19		50	12	46	36	M10*1.0P	3.4
-300	350	300	271	29	240	100	19		50	12	46	36	M10*1.0P	3.6
-SPHC14-150	200	150	121	29	90	100	21		50	14	46	36	M10*1.0P	3
-200	250	200	171	29	140	100	21		50	14	46	36	M10*1.0P	3.2
-250	300	250	221	29	190	100	21		50	14	46	36	M10*1.0P	3.4
-300	350	300	271	29	240	100	21		50	14	46	36	M10*1.0P	3.6
-SPHC16-150	200	150	121	29	90	100	23		50	16	49	39	M12*1.0P	3.2
-200	250	200	171	29	140	100	23		50	16	49	39	M12*1.0P	3.4
-250	300	250	221	29	190	100	23		50	16	49	39	M12*1.0P	3.6
H-300	350	300	271	29	240	100	23		50	16	49	39	M12*1.0P	3.8
-SPHC18-150	200	150	121	29	90	100	25		50	18	49	39	M12*1.0P	3.2
-200	250	200	171	29	140	100	25		50	18	49	39	M12*1.0P	3.4
-250	300	250	221	29	190	100	25		50	18	49	39	M12*1.0P	3.6
-300	350	300	271	29	240	100	25		50	18	49	39	M12*1.0P	3.8
-SPHC20-150	200	150	121	29	90	100	27		50	20	51	41	M16*1.0P	3.4
-200	250	200	171	29	140	100	27		50	20	51	41	M16*1.0P	3.6
-250	300	250	221	29	190	100	27		50	20	51	41	M16*1.0P	3.8
-300	350	300	271	29	240	100	27		50	20	51	41	M16*1.0P	4

规格说明:

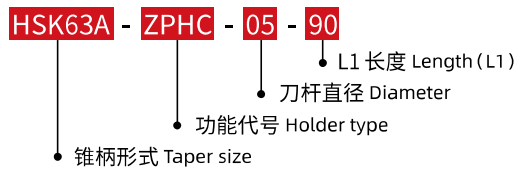

 液压刀柄系列
 HYDRAULIC CHUCKS SERIES

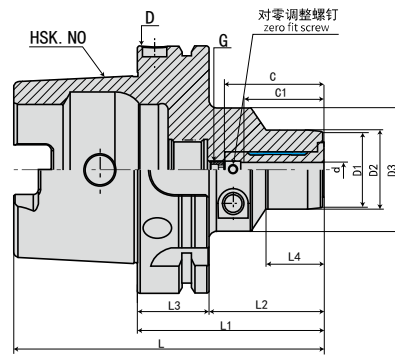
·HSK63A-ZPHC 调零液压刀柄 HSK63A-ZPHC ZERO FIT HYDRAULIC TOOL HOLDER



型号 Model	L	L1	L2	L3	L4	D	D1	D2	D3	d	最大插入深度 C Max. insertion depth	最少插入深度 C1 Min insertion depth	G	重量 KGS
HSK63A-ZPHC05- 90	122	90	64	26	44	63	21	25	50	5	*	26	*	1.2
-ZPHC06- 90	122	90	64	26	44	63	23	26	50	6	41	31	M5*0.8P	1.2
-ZPHC08- 90	122	90	64	26	44	63	25	28	50	8	41	31	M6*1.0P	1.2
-ZPHC10- 95	127	95	69	26	50	63	27	30	50	10	48	38	M8*1.0P	1.3
-ZPHC12-100	132	100	74	26	55	63	29	32	50	12	53	43	M10*1.0P	1.3
-ZPHC16-105	137	105	79	26	61	63	35	38	50	16	58	48	M12*1.0P	1.4
-ZPHC20-105	137	105	79	26	63	63	39	42	50	20	58	48	M16*1.0P	1.5
-ZPHC25-115	147	115	89	26	89	63	46	50	*	25	67	57	M16*1.0P	2.6
-ZPHC32-130	162	130	104	26	104	63	56	60	52.5	30	71	61	M16*1.0P	3.2

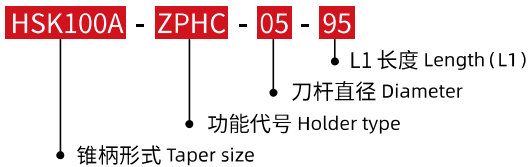
规格说明:



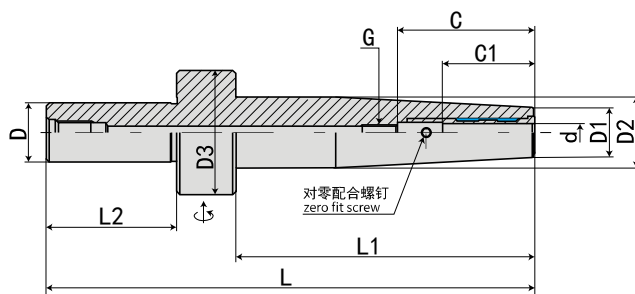
·HSK100A-ZPHC 调零液压刀柄 HSK100A-ZPHC ZERO FIT HYDRAULIC TOOL HOLDER


型号 Model	L	L1	L2	L3	L4	D	D1	D2	D3	d	最大插入深度 C Max. insertion depth	最少插入深度 C1 Min insertion depth	G	重量 KGS
HSK100A-ZPHC05- 95	145	95	66	29	46	100	22	25	50	5	*	26	*	2.8
-ZPHC06- 95	145	95	66	29	46	100	23	26	50	6	41	31	M5*0.8P	2.8
-ZPHC08- 95	145	95	66	29	46	100	25	28	50	8	41	31	M6*1.0P	2.8
-ZPHC10-100	150	100	71	29	52	100	27	30	50	10	48	38	M8*1.0P	2.9
-ZPHC12-105	155	105	76	29	57	100	29	32	50	12	53	43	M10*1.0P	3
-ZPHC16-110	160	110	81	29	63	100	35	38	50	16	58	48	M12*1.0P	3.1
-ZPHC20-110	160	110	81	29	64	100	39	42	50	20	58	48	M16*1.0P	3.4
-ZPHC25-120	170	120	91	29	72	100	53	57	63	25	67	57	M16*1.0P	3.8
-ZPHC32-120	170	120	91	29	72	100	58	63	75	32	71	61	M16*1.0P	4.2

规格说明:

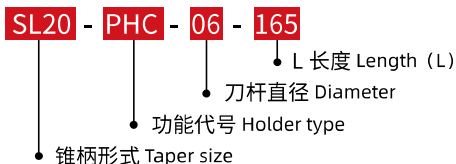

 HYDRAULIC CHUCKS SERIES
 液压刀柄系列

·SL-PHC 液压刀柄 SL-PHC HYDRAULIC TOOL HOLDER



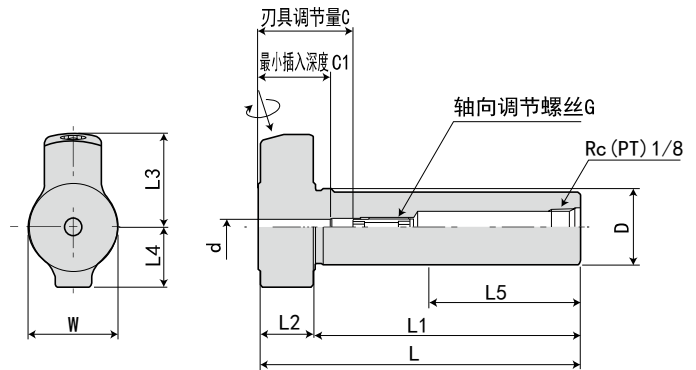
型号 Model	L	L1	L2	D	D1	D2	D3	d	最大插入深度 C Max. insertion depth	最少插入深度 C1 Min insertion depth	G	重量 KGS
SL20-PHC06-165	165	101	50	20	16	24	42	6	41	31	M5*0.8P	0.5
-PHC08-165	165	101	50	20	18	26	42	8	41	31	M6*1.0P	0.5
-PHC10-165	165	101	50	20	20	28	42	10	48	38	M8*1.0P	0.6
-PHC12-165	165	101	50	20	22	30	42	12	53	43	M10*1.0P	0.7
-PHC14-165	165	101	50	20	24	32	42	14	53	43	M10*1.0P	0.7
-PHC16-165	165	101	50	20	26	28	42	16	58	48	M12*1.0P	0.8
-PHC18-165	165	101	50	20	28	30	42	18	58	48	M12*1.0P	0.8
-PHC20-165	165	101	50	20	29	31.5	42	20	58	48	M16*1.0P	0.8
-PHC20-215	215	151	50	20	29	31.5	42	20	58	48	M16*1.0P	1.2

规格说明:



·SL-HDC 走心机液压刀柄

SL-HDC SLIDING HEADSTOCK MACHINE HYDRAULIC TOOL HOLDER



型号 Model	L	L1	L2	L3	L4	W	D	d	最大插入深度 C Max. insertion depth	最少插入深度 C1 Min insertion depth	G	重量 KGS
SL19.05-HDC 3-60*	75	60	15	24.5	15.8	22	19.05	3	20-32	16		0.18
-HDC3.175-60*	75	60	15	24.5	15.8	22	19.05	3.175	20-32	16		0.18
-HDC 4-60	75	60	15	24.5	15.8	22	19.05	4	23-32	19		0.18
-HDC 6-60	75	60	15	24.5	15.8	22	19.05	6	31-48	25		0.18
-HDC 8-60X	75	60	15	25.5	15.8	22	19.05	8	65	31		0.17
SL20-HDC 3-70*	85	70	15	24.5	15.8	23	20	3	20-32	16		0.22
-HDC 4-70	85	70	15	24.5	15.8	23	20	4	23-32	19		0.22
-HDC 6-70	85	70	15	24.5	15.8	23	20	6	31-48	25		0.22
-HDC 8-70X	85	70	15	25.5	15.8	23	20	8	75	31		0.21
SL22-HDC 3-70*	85	70	15	24.5	15.8	25	22	3	20-32	16		0.26
-HDC 4-70	85	70	15	24.5	15.8	25	22	4	23-32	19		0.26
-HDC 6-70X	85	70	15	24.5	15.8	25	22	6	75	25		0.26
-HDC 8-70X	85	70	15	25.5	15.8	25	22	8	75	31		0.25
-HDC10-70X	85	70	15	27	16.8	25	22	10	70	33		0.24
SL25-HDC 3-65*	80	65	15	23	14	28	25	3	20-32	16		0.31
-HDC 4-65	80	65	15	23	14	28	25	4	23-32	19		0.31
-HDC 6-65	80	65	15	24.5	15	28	25	6	31-48	25		0.31
-HDC 8-65X	80	65	15	25.5	16	28	25	8	70	31		0.31
-HDC10-65X	80	65	15	27	17	28	25	10	65	33		0.29
-HDC12-65X	80	65	15	28	18	28	25	12	65	36		0.28
SL25.4-HDC 3-80*	95	80	15	23	14	28	25.4	3	20-32	16		0.37
-HDC 4-80	95	80	15	23	14	28	25.4	4	23-32	19		0.37
-HDC 6-80	95	80	15	24.5	15	28	25.4	6	31-48	25		0.37
-HDC 8-80X	95	80	15	25.5	16	28	25.4	8	85	31		0.37
-HDC10-80X	95	80	15	27	17	28	25.4	10	80	33		0.35
-HDC12-80X	95	80	15	28	18	28	25.4	12	80	36		0.33

规格说明:

SL19.05 - HDC - 3 - 160

- L1 长度 Length (L1)
- 刀杆直径 Diameter
- 功能代号 Holder type
- 锥柄形式 Taper size

·SL-HDC 走心机液压刀柄

SL-HDC SLIDING HEADSTOCK MACHINE HYDRAULIC TOOL HOLDER



FIG.1

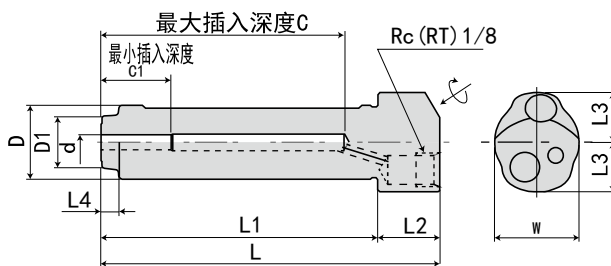
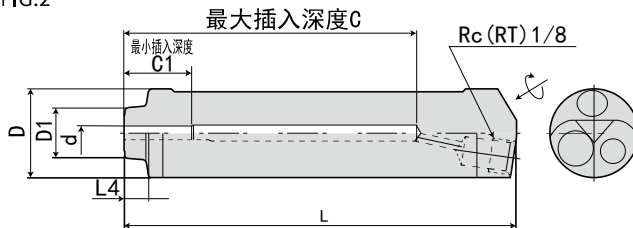
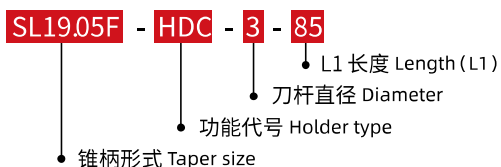


FIG.2



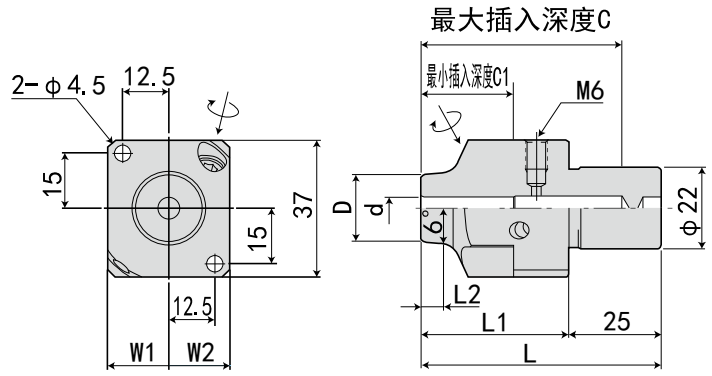
型号 Model	L	L1	L2	L3	L4	W	D	D1	d	最大插入深度 C Max. insertion depth	最少插入深度 C1 Min insertion depth	FIG	重量 KGS
SL19.05F-HDC3-85*	102	85	17	13.5	5	22	19.05	14	3	76	16	1	0.24
-HDC3.175-85*	102	85	17	13.5	5	22	19.05	14	3.175	76	16	1	0.24
-HDC4-85	102	85	17	13.5	5	22	19.05	14	4	76	19	1	0.24
-HDC6-80	97	80	17	13.5	-	22	19.05	-	6	71	25	1	0.22
-HDC8-80	97	80	17	13.5	-	22	19.05	-	8	71	31	1	0.21
SL20F-HDC3-75*	92	75	17	13.5	5	23	20	14	3	66	16	1	0.24
-HDC4-75	92	75	17	13.5	5	23	20	14	4	66	19	1	0.24
-HDC6-70	87	70	17	13.5	-	23	20	-	6	61	25	1	0.22
-HDC8-70	87	70	17	13.5	-	23	20	-	8	61	31	1	0.21
SL22F-HDC3-75*	92	75	17	13.5	5	25	22	14	3	66	16	1	0.28
-HDC4-75	92	75	17	13.5	5	25	22	14	4	66	19	1	0.28
-HDC6-70	87	70	17	13.5	-	25	22	-	6	61	25	1	0.26
-HDC8-70	87	70	17	13.5	-	25	22	-	8	61	31	1	0.25
-HDC10-70	87	70	17	13.5	-	25	22	-	10	61	33	1	0.22
SL25F-HDC3-110*	110	-	-	-	7	-	25	14	3	82	16	2	0.37
-HDC4-110	110	-	-	-	7	-	25	14	4	82	19	2	0.37
-HDC6-105	105	-	-	-	3	-	25	14	6	77	25	2	0.34
-HDC8-100	100	-	-	-	3	-	25	17	8	72	31	2	0.31
-HDC10-95	95	-	-	-	-	-	25	-	10	67	33	2	0.28
-HDC12-90	90	-	-	-	-	-	25	-	12	61	36	2	0.24
SL25.4F-HDC3-105*	105	-	-	-	7	-	25.4	14	3	77	16	2	0.36
-HDC4-105	105	-	-	-	7	-	25.4	14	4	77	19	2	0.36
-HDC6-100	100	-	-	-	3	-	25.4	14	6	72	25	2	0.34
-HDC8-95	95	-	-	-	3	-	25.4	17	8	67	31	2	0.3
-HDC10-90	90	-	-	-	-	-	25.4	-	10	62	33	2	0.27
-HDC12-85	85	-	-	-	-	-	25.4	-	12	56	36	2	0.24

规格说明:



·SL-HDC 走心机液压刀柄

SL-HDC SLIDING HEADSTOCK MACHINE HYDRAULIC TOOL HOLDER



型号 Model	L	L1	L2	W1	W2	D	d	最大插入深度 C Max. insertion depth	最少插入深度 C1 Min insertion depth	重量 KGS
SL22R-HDC3-40*	65	40	7	16.5	16.5	14	3	35	16	0.34
-HDC4-40	65	40	9	16.5	16.5	14	4	42	19	0.33
-HDC6-40	65	40	5	16.5	16.5	18	6	55	25	0.36
-HDC8-40	65	40	6	16.5	17.5	20	8	54	31	0.36
-HDC10-40	65	40	6	16.5	17.5	22	10	54	33	0.35

规格说明:

SL22 - HDC - 3 - 40

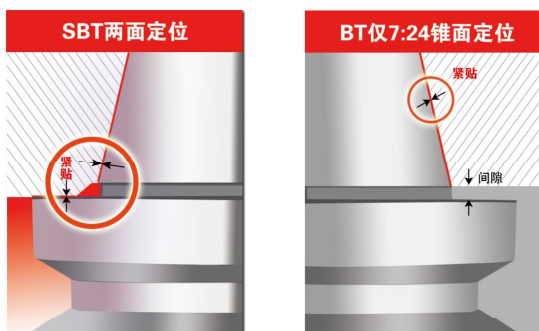
- L1 长度 Length (L1)
- 刀杆直径 Bore diameter
- 功能代号 Holder type
- 锥柄形式 Taper size

HYDRAULIC CHUCKS SERIES
液压刀柄系列

两面定位系统

SBT 两面定位主轴系统

SBT SPINDLE SYSTEM



- 通过确立完善的量规系统，实现了锥面、端面同时两面定位的系统。



SBT 刀柄的各种优点:

- **提高**加工表面光洁度和加工尺寸精度
- **延长**刀具寿命
- **高刚性** 适合重切削
- **提高** ATC 自动换刀的重复精度
- 高速旋转时 Z 轴方向尺寸**稳定**
- **提高**镗孔加工的圆度

拉入量对于端面紧贴很重要！！

刀柄在未被拉紧时，与主轴端面有微小间隙。通过拉紧装置拉入，主轴因弹性形变产生扩张，实现端面完全贴紧。因此，确保端面紧贴的拉入量非常重要。

《参考值》

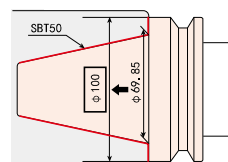
主轴规格	拉紧力	拉入量
#40	800Kg	20μm
#50	2000Kg	20μm

上表中的数值仅供参考，拉入量因主轴形状及紧固机构而异。（本公司加工中心的实测值）

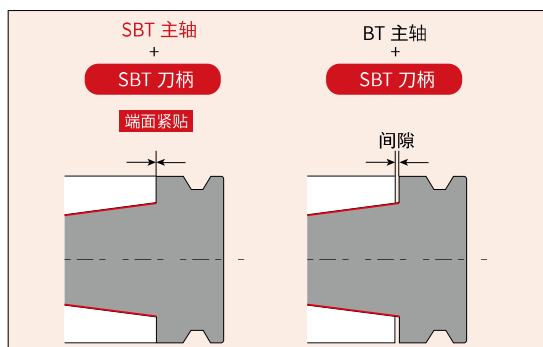
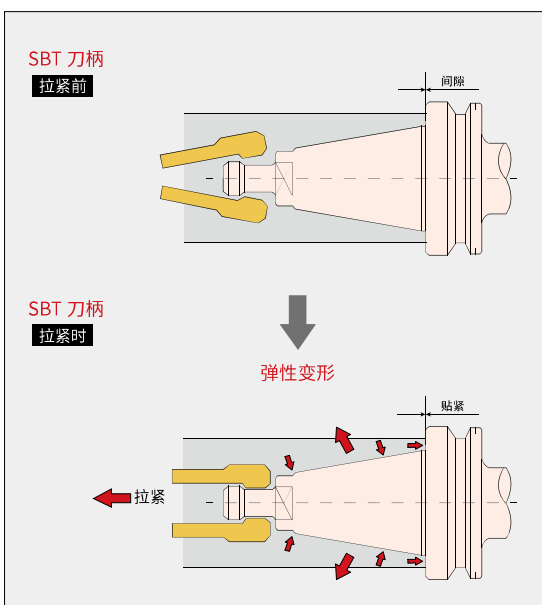
增加刀柄的基准直径，刚性增强。

根据力学原理，基准直径越大刚性越强，普通的 BT 刀柄的基准直径是锥柄的大端直径、而端面紧贴的 SBT 系统的基准直径是法兰外径。因此，SBT 刀柄刚性有了显著增强。

BT30 锥柄	φ31.75	φ46
BT40 锥柄	φ44.45	φ63
BT50 锥柄	φ69.85	φ100



“SBT 主轴 “与” SBT 刀柄 “的最强组合



刀柄除端面位置尺寸外，其他尺寸均以 MAS-BT 规格为标准。

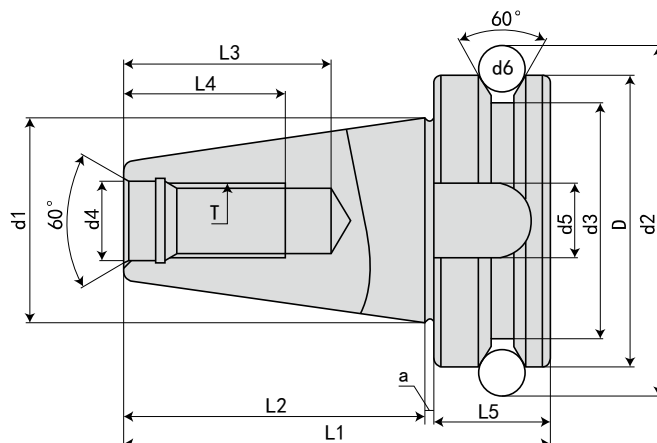
SBT 主轴系统通过组合 SBT 刀柄与 SBT 主轴，可最大限度地发挥两面定位的性能。SBT 刀柄也可使用原有标准规格的 BT 主轴，但这种情况下没有两面定位功能。为了发挥两面定位的优异性能，请在 SBT 主轴中使用 SBT 刀柄。另外，使用 SBT 刀柄以外的两面定位刀柄时，可能会损伤机床主轴，敬请注意。

建议在 SBT 主轴中使用 SBT 刀柄。

请勿在 SBT 主轴中混用 SBT 刀柄和 BT 刀柄。

·参考资料

REFERENCE DETAILS



规格 Model	D h8	d1	d2	d3	d4 H8	d5 H12	d6	L1	L2 ±0.2	L3 Min	L4 Min	L5	a 0 -0.005	T 6H
SBT30	46	31.75	56.14	38	12.5	16.1	8	70.4	48.4	34	24	21	1	M12*1.75P
SBT40	63	44.45	75.679	53	17	16.1	10	92.4	65.4	43	30	26	1	M16*2.0P
SBT50	100	69.85	119.02	83	25	25.7	15	139.8	101.8	62	45	36.5	1.5	M24*3.0P

特点:

- ◎ 锥度精度: <AT3
- ◎ 基本材质: JIS-SCM415 or JIS SNCM220 or JIS SNCM439
- ◎ 硬度: HRC56°~58° 渗碳深度 >0.8mm
- ◎ 真圆度: <0.8um
- ◎ 表面粗糙度: Ra<0.5um
- ◎ 刀柄本体可另外指定: 通过 V 型法兰端出水规格 (DIN-69871-AD+B)
- ◎ ER、EOC、FMA、FMB、MLC、MLD、MLT、SCK、SFC、SKS、SLN (DIN、FID、JIS)、SOM、TG 皆符合: 通过刀柄本体中心出水规格 (DIN-69871-AD)
- ◎ 刀柄有预设标准动平衡 G6.3, 可另外指定精密动平衡 G2.5
- ◎ 本体规范: BIG-PLUS

Features:

- ◎ Taper tolerance<AT3
- ◎ Basic Material:JIS-SCM415
- ◎ Hardness>HRC 56° Carbon depth>0.8mm
- ◎ Roundness<0.8um
- ◎ Surface roughness:Ra<0.5um
- ◎ If it is suitable for center coolant standard(DIN-69871-AD or B),it can be ordered
- ◎ ER、EOC、FMA、FMB、MLC、MLD、MLT、SCK、SFC、SKS、SLN(DIN、FID、JIS)、SOM、TG Are in compliance with:Water through the chuck body center type(DIN-69871-AD)
- ◎ The shank has pre-balance at G6.3,and can provide percision balance at G2.5,made by request
- ◎ Shank body standard:BIG-PLUS

·SBT30-PHC 液压刀柄

SBT30-PHC HYDRAULIC TOOL HOLDER



FIG.1

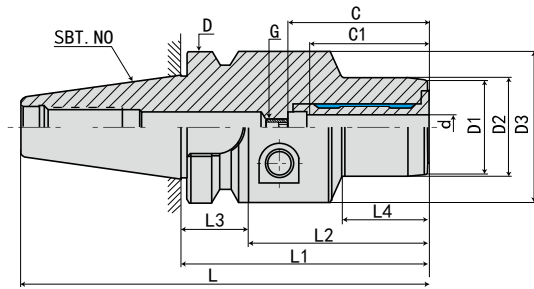
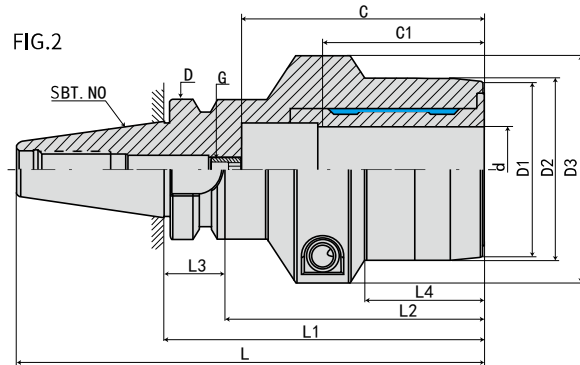


FIG.2



型号 Model	L	L1	L2	L3	L4	D	D1	D2	D3	d	最大插入深度 C Max. insertion depth	最少插入深度 C1 Min insertion depth	G	FIG	重量 KGS
SBT30-PHC03 - 60	108.4	60	38	22	28	46	20	23	45	3	*	18	*	1	0.75
-PHC3.175- 60	108.4	60	38	22	28	46	20	23	45	3.175	*	18	*	1	0.75
-PHC04- 60	108.4	60	38	22	28	46	21	24	45	4	*	24	*	1	0.75
-PHC05- 60	108.4	60	38	22	28	46	22	25	45	5	*	26	*	1	0.75
-PHC06- 70	118.4	70	48	22	28	46	23	26	45	6	37	27	M5*0.8P	1	0.8
-PHC08- 70	118.4	70	48	22	28	46	25	28	45	8	37	27	M6*1.0P	1	0.85
-PHC10- 75	123.4	75	53	22	36	46	27	30	45	10	41	31	M8*1.0P	1	0.85
-PHC12- 75	123.4	75	53	22	36	46	29	32	45	12	46	36	M10*1.0P	1	0.85
-PHC14- 85	133.4	85	63	22	44	46	31	34	45	14	46	36	M10*1.0P	1	0.95
-PHC16- 90	138.4	90	68	22	48	46	35	38	45	16	52	39	M12*1.0P	1	1.05
-PHC18- 90	138.4	90	68	22	48	46	37	40	45	18	52	39	M12*1.0P	1	1.1
-PHC20- 90	138.4	90	68	22	48	46	39	42	45	20	52	41	M16*1.0P	1	1.15
-PHC25-105	153.4	105	83	22	44	46	52	55	63	25	80	47	M16*1.0P	2	1.65
-PHC32-105	153.4	105	83	22	39	46	57	60	68	32	80	51	M16*1.0P	2	1.8

规格说明:

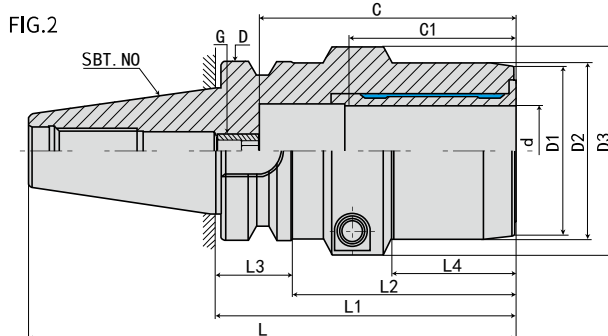
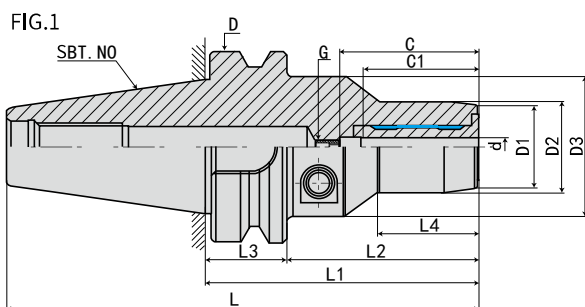
SBT30 - PHC - 03 - 60

- L1 长度 Length (L1)
- 刀杆直径 Diameter
- 功能代号 Holder type
- 锥柄形式 Taper size



·SBT40-PHC 液压刀柄

SBT40-PHC HYDRAULIC TOOL HOLDER



型号 Model	L	L1	L2	L3	L4	D	D1	D2	D3	d	最大插入深度 C Max. insertion depth	最少插入深度 C1 Min insertion depth	G	FIG	重量 KGS
SBT40-PHC03- 75	140.4	75	48	27	26	63	20	23	50	3	*	18	*	1	1.28
- 90	155.4	90	63	27	29	63	20	23	50	3	*	18	*	1	1.38
-PHC3.175- 75	140.4	75	48	27	26	63	20	23	50	3.175	*	18	*	1	1.28
- 90	155.4	90	63	27	29	63	20	23	50	3.175	*	18	*	1	1.38
-PHC04- 75	140.4	75	48	27	26	63	21	24	50	4	*	24	*	1	1.28
- 90	155.4	90	63	27	29	63	21	24	50	4	*	24	*	1	1.38
-PHC05- 75	140.4	75	48	27	26	63	22	25	50	5	*	26	*	1	1.3
- 90	155.4	90	63	27	29	63	22	25	50	5	*	26	*	1	1.4
-PHC06- 75	140.4	75	48	27	26	63	23	26	50	6	37	27	M5*0.8P	1	1.32
- 90	155.4	90	63	27	29	63	23	26	50	6	37	27	M5*0.8P	1	1.41
-PHC08- 75	140.4	75	48	27	26	63	25	28	50	8	37	27	M6*1.0P	1	1.36
- 90	155.4	90	63	27	30	63	25	28	50	8	37	27	M6*1.0P	1	1.46
-PHC10- 75	140.4	75	48	27	26	63	27	30	50	10	41	31	M8*1.0P	1	1.43
- 90	155.4	90	63	27	35	63	27	30	50	10	41	31	M8*1.0P	1	1.57
-PHC12- 75	140.4	75	48	27	26	63	29	32	50	12	46	36	M10*1.0P	1	1.46
- 90	155.4	90	63	27	40	63	29	32	50	12	46	36	M10*1.0P	1	1.62
-PHC14- 75	140.4	75	48	27	26	63	31	34	50	14	46	36	M10*1.0P	1	1.48
- 90	155.4	90	63	27	40	63	31	34	50	14	46	36	M10*1.0P	1	1.68
-PHC16- 75	140.4	75	48	27	26	63	35	38	50	16	75	39	M12*1.0P	1	1.51
- 90	155.4	90	63	27	45	63	35	38	50	16	75	39	M12*1.0P	1	1.7
-PHC18- 75	140.4	75	48	27	26	63	37	40	50	18	75	39	M12*1.0P	1	1.51
- 90	155.4	90	63	27	46	63	37	40	50	18	75	39	M12*1.0P	1	1.7
-PHC20- 75	140.4	75	48	27	26	63	39	42	50	20	80	41	M16*1.0P	1	1.52
- 90	155.4	90	63	27	47	63	39	42	50	20	80	41	M16*1.0P	1	1.75
-PHC25-105	170.4	105	78	27	50	63	52	55	63	25	80	47	M16*1.0P	1	2.05
-PHC32-105	170.4	105	78	27	48	63	60	63	73	32	90	51	M16*1.0P	2	2.34
-PHC40-120	185.4	120	93	27		63				40	90		M16*1.0P	2	3
-PHC42-120	185.4	120	93	27		63				42	90		M16*1.0P	2	3

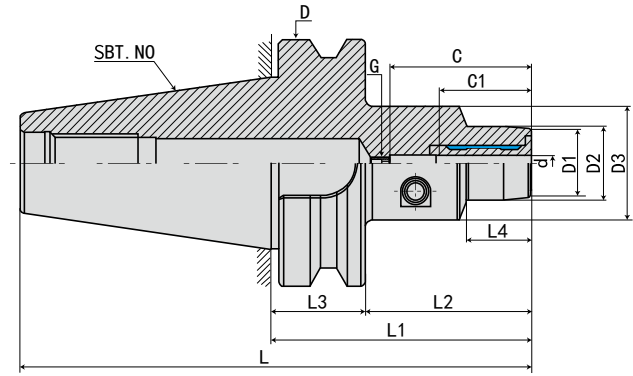
规格说明:

SBT40 - PHC - 03 - 75

- L1 长度 Length(L1)
- 刀杆直径 Diameter
- 功能代号 Holder type
- 锥柄形式 Taper size

·SBT50-PHC 液压刀柄

SBT50-PHC HYDRAULIC TOOL HOLDER



型号 Model	L	L1	L2	L3	L4	D	D1	D2	D3	d	最大插入深度 C Max. insertion depth	最少插入深度 C1 Min insertion depth	G	重量 KGS
SBT50-PHC05- 90	191.8	90	52	38	32	100	22	25	49.5	5	*	26	*	4.2
-120	221.8	120	82	38	44	100	22	25	49.5	5	*	26	*	4.5
-PHC06- 90	191.8	90	52	38	32	100	23	26	49.5	6	37	27	M5*0.8P	4.2
-120	221.8	120	82	38	44	100	23	26	49.5	6	37	27	M5*0.8P	4.5
-PHC08- 90	191.8	90	52	38	32	100	25	28	49.5	8	37	27	M6*1.0P	4.2
-120	221.8	120	82	38	44	100	25	28	49.5	8	37	27	M6*1.0P	4.5
-PHC10- 90	191.8	90	52	38	32	100	27	30	49.5	10	41	31	M8*1.0P	4.2
-120	221.8	120	82	38	44	100	27	30	49.5	10	41	31	M8*1.0P	4.5
-PHC12- 90	191.8	90	52	38	32	100	29	32	49.5	12	46	36	M10*1.0P	4.3
-120	221.8	120	82	38	44	100	29	32	49.5	12	46	36	M10*1.0P	4.5
-PHC14- 90	191.8	90	52	38	32	100	31	34	49.5	14	46	36	M10*1.0P	4.3
-120	221.8	120	82	38	44	100	31	34	49.5	14	46	36	M10*1.0P	4.6
-PHC16- 90	191.8	90	52	38	32	100	35	38	49.5	16	75	39	M12*1.0P	4.3
-120	221.8	120	82	38	48	100	35	38	49.5	16	75	39	M12*1.0P	4.6
-PHC18- 90	191.8	90	52	38	32	100	37	40	49.5	18	75	39	M12*1.0P	4.4
-120	221.8	120	82	38	48	100	37	40	49.5	18	75	39	M12*1.0P	4.6
-PHC20- 90	191.8	90	52	38	32	100	39	42	49.5	20	75	41	M16*1.0P	4.4
-120	221.8	120	82	38	48	100	39	42	49.5	20	75	41	M16*1.0P	4.7
-PHC25-120	221.8	120	82	38	48	100	53	57	63	25	80	47	M16*1.0P	4.9
-PHC32-120	221.8	120	82	38	48	100	58	62	70	32	90	51	M16*1.0P	5.2
-PHC40-120	221.8	120	82	38		100				40	90	61	M16*1.0P	6
-PHC42-120	221.8	120	82	38		100				42	90	61	M16*1.0P	6
-PHC50-120	221.8	120	82	38		100				50	90	61	M16*1.0P	7

规格说明:

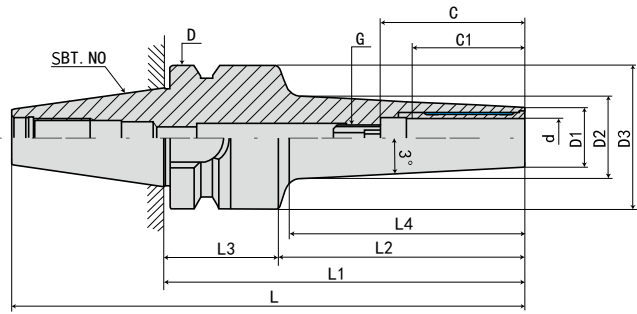
SBT50 - PHC - 05 - 90

- L1 长度 Length (L1)
- 刀杆直径 Diameter
- 功能代号 Holder type
- 锥柄形式 Taper size

液压刀柄系列
HYDRAULIC CHUCKS SERIES

·SBT30-SPHC 液压刀柄

SBT30-SPHC HYDRAULIC TOOL HOLDER



型号 Model	L	L1	L2	L3	L4	D	D1	D2	D3	d	最大插入深度 C Max.insertiondepth	最少插入深度 C1 Mininsertiondepth	G	重量 KGS
SBT30-SPHC03- 85	133.4	85	63	22	42	46	11		45	3	*	18	*	1.1
-SPHC04- 85	133.4	85	63	22	42	46	11		45	4	*	24	*	1.1
-SPHC05- 85	133.4	85	63	22	42	46	12		45	5	*	26	*	1.4
-SPHC06-115	163.4	115	93	22	74	46	13		45	6	37	27	M5*0.8P	1.4
-SPHC08-115	163.4	115	93	22	74	46	15		45	8	37	27	M6*1.0P	1.4
-SPHC10-115	163.4	115	93	22	74	46	17		45	10	41	31	M8*1.0P	1.4
-SPHC12-115	163.4	115	93	22	75	46	19		45	12	46	36	M10*1.0P	1.4

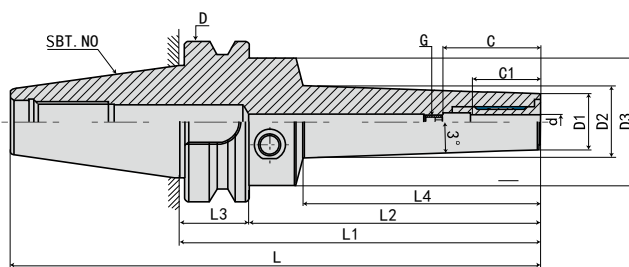
规格说明:

SBT30 - SPHC - 03 - 85

- L1 长度 Length (L1)
- 刀杆直径 Diameter
- 功能代号 Holder type
- 锥柄形式 Taper size

·SBT40-SPHC 液压刀柄

SBT40-SPHC HYDRAULIC TOOL HOLDER



型号 Model	L	L1	L2	L3	L4	D	D1	D2	D3	d	最大插入深度 C Max. insertion depth	最少插入深度 C1 Min insertion depth	G	重量 KGS
SBT40-SPHC03- 90	155.4	90	63	27	42	63	11		46	3	*	18	*	1.1
-120	185.4	120	93	27	72	63	11		46	3	*	18	*	1.3
-SPHC04- 90	155.4	90	63	27	42	63	11		46	4	*	24	*	1.1
-120	185.4	120	93	27	72	63	11		46	4	*	24	*	1.3
-SPHC05- 90	155.4	90	63	27	42	63	12		46	5	*	26	*	1.4
-120	185.4	120	93	27	72	63	12		46	5	*	26	*	1.3
-SPHC06-120	185.4	120	93	27	74	63	13		46	6	37	27	M5*0.8P	1.4
-150	215.4	150	123	27	104	63	13		46	6	37	27	M5*0.8P	1.5
-200	265.4	200	173	27	154	63	13		46	6	37	27	M5*0.8P	1.7
-SPHC08-120	185.4	120	93	27	74	63	15		46	8	37	27	M6*1.0P	1.4
-150	215.4	150	123	27	104	63	15		46	8	37	27	M6*1.0P	1.5
-200	265.4	200	173	27	154	63	15		46	8	37	27	M6*1.0P	1.7
-SPHC10-120	185.4	120	93	27	74	63	17		46	10	41	31	M8*1.0P	1.4
-150	215.4	150	123	27	104	63	17		46	10	41	31	M8*1.0P	1.5
-200	265.4	200	173	27	154	63	17		46	10	41	31	M8*1.0P	1.7
-SPHC12-120	185.4	120	93	27	75	63	19		46	12	46	36	M10*1.0P	1.4
-150	215.4	150	123	27	105	63	19		46	12	46	36	M10*1.0P	1.5
-200	265.4	200	173	27	154	63	19		46	12	46	36	M10*1.0P	1.7
-SPHC14-120	185.4	120	93	27	75	63	21		46	14	46	36	M10*1.0P	1.4
-150	215.4	150	123	27	105	63	21		46	14	46	36	M10*1.0P	1.5
-200	265.4	200	173	27	154	63	21		46	14	46	36	M10*1.0P	1.7
-SPHC16-120	185.4	120	93	27	75	63	23		50	16	49	39	M12*1.0P	1.5
-150	215.4	150	123	27	105	63	23		50	16	49	39	M12*1.0P	1.6
-SPHC16-200	265.4	200	173	27	154	63	23		50	16	49	39	M12*1.0P	1.8
-SPHC18-120	185.4	120	93	27	75	63	25		50	18	49	39	M12*1.0P	1.5
-150	215.4	150	123	27	105	63	25		50	18	49	39	M12*1.0P	1.6
-200	265.4	200	173	27	154	63	25		50	18	49	39	M12*1.0P	1.8
-SPHC20-120	185.4	120	93	27	75	63	27		50	20	51	41	M16*1.0P	1.6
-150	215.4	150	123	27	105	63	27		50	20	51	41	M16*1.0P	1.7
-200	265.4	200	173	27	154	63	27		50	20	51	41	M16*1.0P	1.9

规格说明:

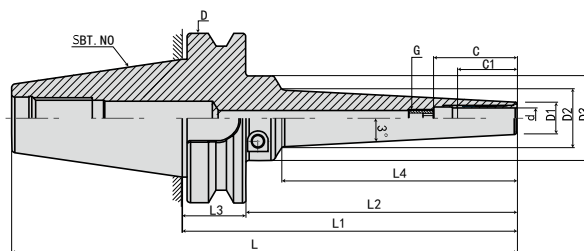
SBT40 - SPHC - 03 - 90

- L1 长度 Length (L1)
- 刀杆直径 Diameter
- 功能代号 Holder type
- 锥柄形式 Taper size



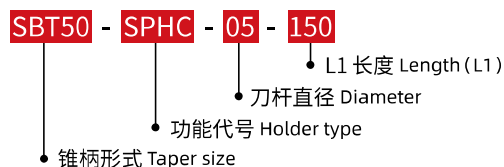
·SBT50-SPHC 液压刀柄

SBT50-SPHC HYDRAULIC TOOL HOLDER



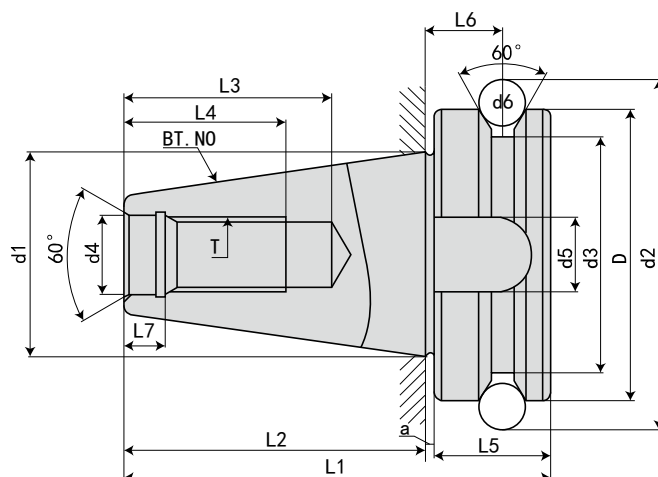
型号 Model	L	L1	L2	L3	L4	D	D1	D2	D3	d	最大插入深度 C Max. insertion depth	最少插入深度 C1 Min insertion depth	G	重量 KGS
SBT50-SPHC05-150	251.8	150	112	38	80	100	12		50	5	*	26	*	4.2
-200	301.8	200	162	38	130	100	12		50	5	*	26	*	4.4
-250	351.8	250	212	38	180	100	12		50	5	*	26	*	4.6
-300	401.8	300	262	38	230	100	12		50	5	*	26	*	4.8
-SPHC06-150	251.8	150	112	38	80	100	13		50	6	37	27	M5*0.8P	4.2
-200	301.8	200	162	38	130	100	13		50	6	37	27	M5*0.8P	4.4
-250	351.8	250	212	38	180	100	13		50	6	37	27	M5*0.8P	4.6
-300	401.8	300	262	38	230	100	13		50	6	37	27	M5*0.8P	4.8
-SPHC08-150	251.8	150	112	38	80	100	15		50	8	37	27	M6*1.0P	4.2
-200	301.8	200	162	38	130	100	15		50	8	37	27	M6*1.0P	4.4
-250	351.8	250	212	38	180	100	15		50	8	37	27	M6*1.0P	4.6
-300	401.8	300	262	38	230	100	15		50	8	37	27	M6*1.0P	4.8
-SPHC10-150	251.8	150	112	38	80	100	17		50	10	41	31	M8*1.0P	4.3
-200	301.8	200	162	38	130	100	17		50	10	41	31	M8*1.0P	4.5
-250	351.8	250	212	38	180	100	17		50	10	41	31	M8*1.0P	4.7
-300	401.8	300	262	38	230	100	17		50	10	41	31	M8*1.0P	4.9
-SPHC12-150	251.8	150	112	38	80	100	19		50	12	46	36	M10*1.0P	4.3
-200	301.8	200	162	38	130	100	19		50	12	46	36	M10*1.0P	4.5
-250	351.8	250	212	38	180	100	19		50	12	46	36	M10*1.0P	4.7
-300	401.8	300	262	38	230	100	19		50	12	46	36	M10*1.0P	4.9
-SPHC14-150	251.8	150	112	38	80	100	21		50	14	46	36	M10*1.0P	4.4
-200	301.8	200	162	38	130	100	21		50	14	46	36	M10*1.0P	4.6
-250	351.8	250	212	38	180	100	21		50	14	46	36	M10*1.0P	4.8
-300	401.8	300	262	38	230	100	21		50	14	46	36	M10*1.0P	5
-SPHC16-150	251.8	150	112	38	80	100	23		50	16	75	39	M12*1.0P	4.4
-200	301.8	200	162	38	130	100	23		50	16	75	39	M12*1.0P	4.6
-250	351.8	250	212	38	180	100	23		50	16	75	39	M12*1.0P	4.8
-300	401.8	300	262	38	230	100	23		50	16	75	39	M12*1.0P	5
-SPHC18-150	251.8	150	112	38	80	100	25		50	18	75	39	M12*1.0P	4.5
-200	301.8	200	162	38	130	100	25		50	18	75	39	M12*1.0P	4.7
-250	351.8	250	212	38	180	100	25		50	18	75	39	M12*1.0P	4.9
-300	401.8	300	262	38	230	100	25		50	18	75	39	M12*1.0P	5.1
-SPHC20-150	251.8	150	112	38	80	100	27		50	20	75	41	M16*1.0P	4.6
-200	301.8	200	162	38	130	100	27		50	20	75	41	M16*1.0P	4.8
-250	351.8	250	212	38	180	100	27		50	20	75	41	M16*1.0P	5
-300	401.8	300	262	38	230	100	27		50	20	75	41	M16*1.0P	5.2

规格说明:



·参考资料

REFERENCE DETAILS



规格 Model	D h8	d1	d2	d3	d4 H8	d5 H12	d6	L1	L2 ±0.2	L3 Min	L4 Min	L5	a ±0.4	T 6H
BT30	46	31.75	56.14	38	12.5	16.1	8	70.4	48.4	34	24	20	2	M12*1.75P
BT40	63	44.45	75.679	53	17	16.1	10	92.4	65.4	70	30	25	2	M16*2.0P
BT50	100	69.85	119.02	83	25	25.7	15	139.8	101.8	90	45	35	3	M24*3.0P

特点:

- ◎ 锥度精度: <AT3
- ◎ 基本材质: JIS-SCM415 or JIS SNCM220 or JIS SNCM439
- ◎ 硬度: HRC56°~58° 渗碳深度 >0.8mm
- ◎ 真圆度: <0.8um
- ◎ 表面粗糙度: Ra<0.5um
- ◎ 刀柄本体可另外指定: 通过 V 型法兰端出水规格 (DIN-69871-AD+B)
- ◎ ER、EOC、FMA、FMB、MLC、MLD、MLT、SCK、SFC、SKS、SLN (DIN、FID、JIS)、SOM、TG 皆符合: 通过刀柄本体中心出水规格 (DIN-69871-AD)
- ◎ 刀柄有预设标准动平衡 G6.3, 可另外指定精密动平衡 G2.5
- ◎ 本体规范: JIS MAS 403 及 B6339

Features:

- ◎ Taper tolerance<AT3
- ◎ Basic Material:JIS-SCM415
- ◎ Hardness>HRC 56° Carbon depth>0.8mm
- ◎ Roundness<0.8um
- ◎ Surface roughness:Ra<0.5um
- ◎ If it is suitable for center coolant standard(DIN-69871-AD or B),it can be ordered
- ◎ ER、EOC、FMA、FMB、MLC、MLD、MLT、SCK、SFC、SKS、SLN(DIN、FID、JIS)、SOM、TG Are in compliance with:Water through the chuck body center type(DIN-69871-AD)
- ◎ The shank has pre-balance at G6.3,and can provide percision balance at G2.5,made by request
- ◎ Shank body standard:JIS MAS 403 and B6339

·BT30-PHC 液压刀柄

BT30-PHC HYDRAULIC TOOL HOLDER



FIG.1

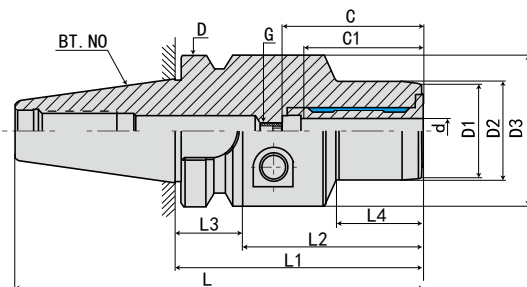
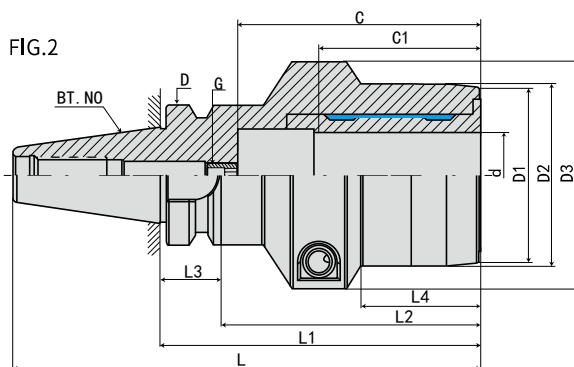


FIG.2



型号 Model	L	L1	L2	L3	L4	D	D1	D2	D3	d	最大插入深度 C Max. insertion depth	最少插入深度 C1 Min insertion depth	G	FIG	重量 KGS
BT30-PHC03 - 60	108.4	60	38	22	28	46	20	23	45	3	*	18	*	1	0.75
-PHC3.175-60	108.4	60	38	22	28	46	20	23	45	3.175	*	18	*	1	0.75
-PHC04- 60	108.4	60	38	22	28	46	21	24	45	4	*	24	*	1	0.75
-PHC05- 60	108.4	60	38	22	28	46	22	25	45	5	*	26	*	1	0.75
-PHC06- 70	118.4	70	48	22	28	46	23	26	45	6	37	27	M5*0.8P	1	0.8
-PHC08- 70	118.4	70	48	22	28	46	25	28	45	8	37	27	M6*1.0P	1	0.85
-PHC10- 75	123.4	75	53	22	36	46	27	30	45	10	41	31	M8*1.0P	1	0.85
-PHC12- 75	123.4	75	53	22	36	46	29	32	45	12	46	36	M10*1.0P	1	0.85
-PHC14- 85	133.4	85	63	22	44	46	31	34	45	14	46	36	M10*1.0P	1	0.95
-PHC16- 90	138.4	90	68	22	48	46	35	38	45	16	52	39	M12*1.0P	1	1.05
-PHC18- 90	138.4	90	68	22	48	46	37	40	45	18	52	39	M12*1.0P	1	1.1
-PHC20- 90	138.4	90	68	22	48	46	39	42	45	20	52	41	M16*1.0P	1	1.15
-PHC25-105	153.4	105	83	22	44	46	52	55	63	25	80	47	M16*1.0P	2	1.65
-PHC32-105	153.4	105	83	22	39	46	57	60	68	32	80	51	M16*1.0P	2	1.8

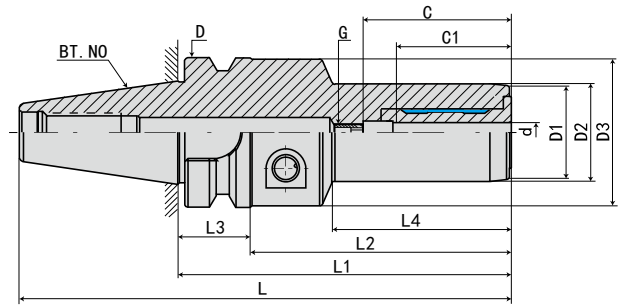
规格说明:

BT30 - PHC - 03 - 60

- L1 长度 Length (L1)
- 刀杆直径 Diameter
- 功能代号 Holder type
- 锥柄形式 Taper size

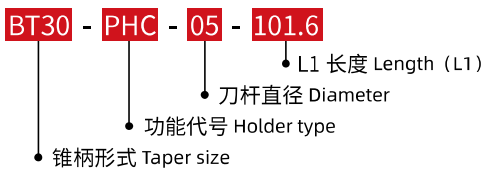
·BT30-PHC 液压刀柄

BT30-PHC HYDRAULIC TOOL HOLDER



型号 Model	L	L1	L2	L3	L4	D	D1	D2	D3	d	最大插入深度 C Max. insertion depth	最少插入深度 C1 Min insertion depth	G	重量 KGS
BT30-PHC05-101.6	150	101.6	79.6	22	54.5	46	22	25	45	5	*	26	*	2
-PHC06-101.6	150	101.6	79.6	22	54.5	46	22.2	26	45	6	37	27	M5*0.8P	2
-PHC08-101.6	150	101.6	79.6	22	54.5	46	22.2	26	45	8	37	27	M6*1.0P	2
-PHC10-101.6	150	101.6	79.6	22	55.7	46	26	30	45	10	41	31	M8*1.0P	2
-PHC12-101.6	150	101.6	79.6	22	56.2	46	26	32	45	12	46	36	M10*1.0P	2
-PHC14-101.6	150	101.6	79.6	22	57	46	30	36	45	14	46	36	M10*1.0P	2
-PHC16-101.6	150	101.6	79.6	22	57	46	32	38	45	16	49	39	M12*1.0P	2
-PHC18-101.6	150	101.6	79.6	22	58	46	34	40	45	18	49	39	M12*1.0P	2
-PHC20-101.6	150	101.6	79.6	22	59.5	46	36	42	45	20	51	41	M16*1.0P	2

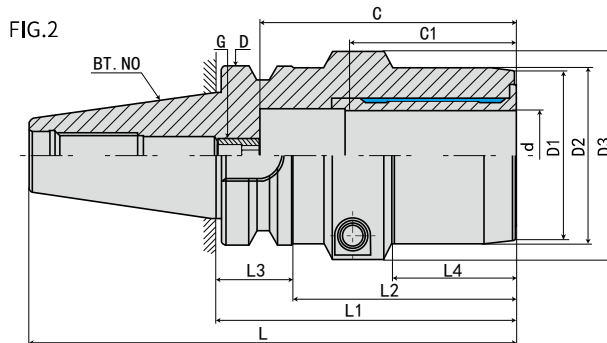
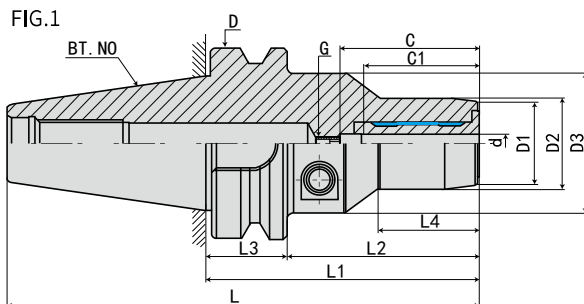
规格说明:



液压刀柄系列
HYDRAULIC CHUCKS SERIES

·BT40-PHC 液压刀柄

BT40-PHC HYDRAULIC TOOL HOLDER



型号 Model	L	L1	L2	L3	L4	D	D1	D2	D3	d	最大插入深度 C Max. insertion depth	最少插入深度 C1 Min insertion depth	G	FIG	重量 KGS
BT40-PHC03-75	140.4	75	48	27	26	63	20	23	50	3	*	18	*	1	1.28
-90	155.4	90	63	27	29	63	20	23	50	3	*	18	*	1	1.38
-PHC3.175-75	140.4	75	48	27	26	63	20	23	50	3.175	*	18	*	1	1.28
-90	155.4	90	63	27	29	63	20	23	50	3.175	*	18	*	1	1.38
-PHC04-75	140.4	75	48	27	26	63	21	24	50	4	*	24	*	1	1.28
-90	155.4	90	63	27	29	63	21	24	50	4	*	24	*	1	1.38
-PHC05-75	140.4	75	48	27	26	63	22	25	50	5	*	26	*	1	1.3
-90	155.4	90	63	27	29	63	22	25	50	5	*	26	*	1	1.4
-PHC06-75	140.4	75	48	27	26	63	23	26	50	6	37	27	M5*0.8P	1	1.32
-90	155.4	90	63	27	29	63	23	26	50	6	37	27	M5*0.8P	1	1.41
-PHC08-75	140.4	75	48	27	26	63	25	28	50	8	37	27	M6*1.0P	1	1.36
-90	155.4	90	63	27	30	63	25	28	50	8	37	27	M6*1.0P	1	1.46
-PHC10-75	140.4	75	48	27	26	63	27	30	50	10	41	31	M8*1.0P	1	1.43
-90	155.4	90	63	27	35	63	27	30	50	10	41	31	M8*1.0P	1	1.57
-PHC12-75	140.4	75	48	27	26	63	29	32	50	12	46	36	M10*1.0P	1	1.46
-90	155.4	90	63	27	40	63	29	32	50	12	46	36	M10*1.0P	1	1.62
-PHC14-75	140.4	75	48	27	26	63	31	34	50	14	46	36	M10*1.0P	1	1.48
-90	155.4	90	63	27	40	63	31	34	50	14	46	36	M10*1.0P	1	1.68
-PHC16-75	140.4	75	48	27	26	63	35	38	50	16	75	39	M12*1.0P	1	1.51
-90	155.4	90	63	27	45	63	35	38	50	16	75	39	M12*1.0P	1	1.7
-PHC18-75	140.4	75	48	27	26	63	37	40	50	18	75	39	M12*1.0P	1	1.51
-90	155.4	90	63	27	46	63	37	40	50	18	75	39	M12*1.0P	1	1.7
-PHC20-75	140.4	75	48	27	26	63	39	42	50	20	80	41	M16*1.0P	1	1.52
-90	155.4	90	63	27	47	63	39	42	50	20	80	41	M16*1.0P	1	1.75
-PHC25-105	170.4	105	78	27	50	63	52	55	63	25	80	47	M16*1.0P	1	2.05
-PHC32-105	170.4	105	78	27	48	63	60	63	73	32	90	51	M16*1.0P	2	2.34
-PHC40-120	185.4	120	93	27		63				40	90		M16*1.0P	2	3
-PHC42-120	185.4	120	93	27		63				42	90		M16*1.0P	2	3

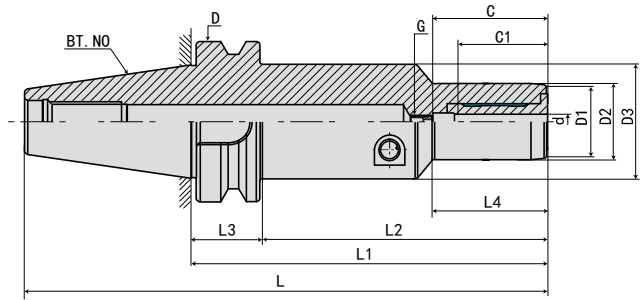
规格说明:

BT40 - PHC - 03 - 75

- L1 长度 Length (L1)
- 刀杆直径 Diameter
- 功能代号 Holder type
- 锥柄形式 Taper size

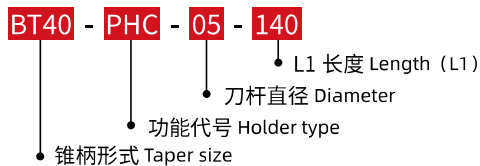
·BT40-PHC 液压刀柄

BT40-PHC HYDRAULIC TOOL HOLDER



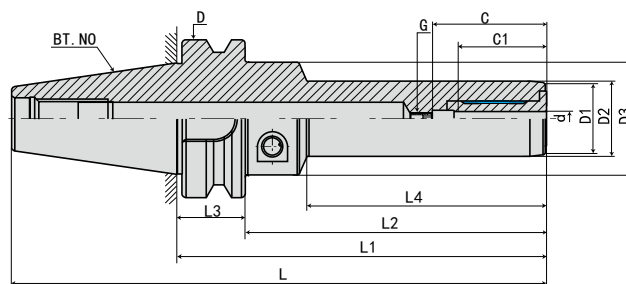
型号 Model	L	L1	L2	L3	L4	D	D1	D2	D3	d	最大插入深度 C Max. insertion depth	最少插入深度 C1 Min insertion depth	G	重量 KGS
BT40-PHC05-140	205.4	140	113	27	43	63	22	25	45	5	*	26	*	2.1
-PHC06-140	205.4	140	113	27	43	63	23	26	45	6	37	27	M5*0.8P	2.1
-PHC08-140	205.4	140	113	27	44	63	25	28	45	8	37	27	M6*1.0P	2.1
-PHC10-140	205.4	140	113	27	44	63	27	30	45	10	41	31	M8*1.0P	2.1
-PHC12-140	205.4	140	113	27	44	63	29	32	45	12	46	36	M10*1.0P	2.1
-PHC14-140	205.4	140	113	27	44	63	31	34	45	14	46	36	M10*1.0P	2.2
-PHC16-140	205.4	140	113	27	47	63	35	38	45	16	52	42	M12*1.0P	2.2
-PHC18-140	205.4	140	113	27	47	63	37	40	45	18	52	42	M12*1.0P	2.2
-PHC20-140	205.4	140	113	27	47	63	39	42	45	20	52	42	M16*1.0P	2.2
-PHC25-140	205.4	140	113	27	47	63	52	55	57	25	57	47	M16*1.0P	2.8
-PHC32-140	205.4	140	113	27	47	63	60	63	62	32	61	51	M16*1.0P	2.9

规格说明:



·BT40-JPHC 液压刀柄

BT40-JPHC HYDRAULIC TOOL HOLDER



型号 Model	L	L1	L2	L3	L4	D	D1	D2	D3	d	最大插入深度 C Max. insertion depth	最少插入深度 C1 Min insertion depth	G	重量 KGS
BT40-JPHC05-150	215.4	150	123	27	103	63	21	25	50	5	*	26	*	2.1
-200	265.4	200	173	27	153	63	21	25	50	5	*	26	*	2.2
-250	315.4	250	223	27	203	63	21	25	50	5	*	26	*	2.3
-JPHC06-150	215.4	150	123	27	103	63	22	26	50	6	37	27	M5*0.8P	2.1
-200	265.4	200	173	27	153	63	22	26	50	6	37	27	M5*0.8P	2.2
-250	315.4	250	223	27	203	63	22	26	50	6	37	27	M5*0.8P	2.3
-JPHC08-150	215.4	150	123	27	104	63	24	28	50	8	37	27	M6*1.0P	2.1
-200	265.4	200	173	27	154	63	24	28	50	8	37	27	M6*1.0P	2.2
-250	315.4	250	223	27	204	63	24	28	50	8	37	27	M6*1.0P	2.3
-JPHC10-150	215.4	150	123	27	104	63	26	30	50	10	41	31	M8*1.0P	2.1
-200	265.4	200	173	27	154	63	26	30	50	10	41	31	M8*1.0P	2.2
-250	315.4	250	223	27	204	63	26	30	50	10	41	31	M8*1.0P	2.3
-JPHC12-150	215.4	150	123	27	105	63	28	32	50	12	46	36	M10*1.0P	2.1
-200	265.4	200	173	27	155	63	28	32	50	12	46	36	M10*1.0P	2.2
-250	315.4	250	223	27	204	63	28	32	50	12	46	36	M10*1.0P	2.3
-JPHC14-150	215.4	150	123	27	105	63	30	34	50	14	46	36	M10*1.0P	2.1
-200	265.4	200	173	27	155	63	30	34	50	14	46	36	M10*1.0P	2.2
-250	315.4	250	223	27	204	63	30	34	50	14	46	36	M10*1.0P	2.3
-JPHC16-150	215.4	150	123	27	106	63	34	38	50	16	49	39	M12*1.0P	2.2
-200	265.4	200	173	27	156	63	34	38	50	16	49	39	M12*1.0P	2.3
-250	315.4	250	223	27	206	63	34	38	50	16	49	39	M12*1.0P	2.4
-JPHC18-150	215.4	150	123	27	107	63	36	40	50	18	49	39	M12*1.0P	2.2
-200	265.4	200	173	27	157	63	36	40	50	18	49	39	M12*1.0P	2.3
-250	315.4	250	223	27	207	63	36	40	50	18	49	39	M12*1.0P	2.4
-JPHC20-150	215.4	150	123	27	108	63	38	42	50	20	51	41	M16*1.0P	2.3
-200	265.4	200	173	27	158	63	38	42	50	20	51	41	M16*1.0P	2.4
-250	315.4	250	223	27	208	63	38	42	50	20	51	41	M16*1.0P	2.5

规格说明:

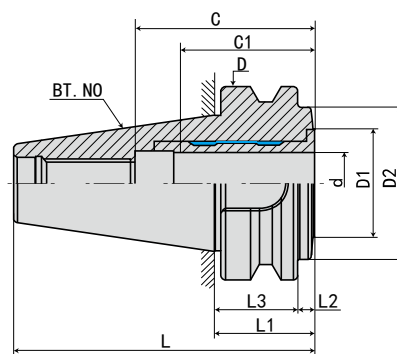
BT40 - JPHC - 05 - 150

- L1 长度 Length (L1)
- 刀杆直径 Diameter
- 功能代号 Holder type
- 锥柄形式 Taper size

 液压刀柄系列
 HYDRAULIC CHUCKS SERIES

·BT40-PHC 液压刀柄

BT40-PHC HYDRAULIC TOOL HOLDER



型号 Model	L	L1	L2	L3	D	D1	D2	d	最大插入深度 C Max. insertion depth	最少插入深度 C1 Min insertion depth	G	重量 KGS
BT40-PHC20-32.5	97.9	32.5	5.5	27	63	34	49.5	20	51	41	M16*1.0P	0.7

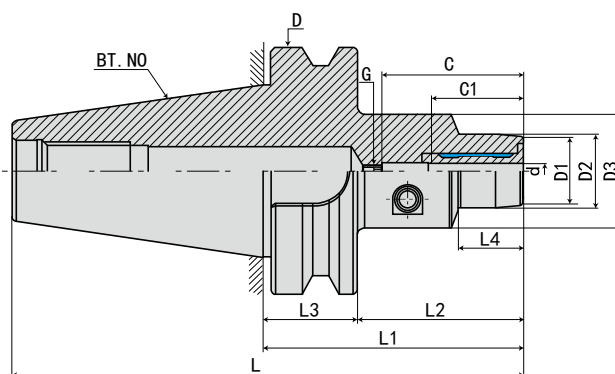
规格说明:

BT40 - PHC - 20 - 32.5

- L1 长度 Length (L1)
- 刀杆直径 Diameter
- 功能代号 Holder type
- 锥柄形式 Taper size

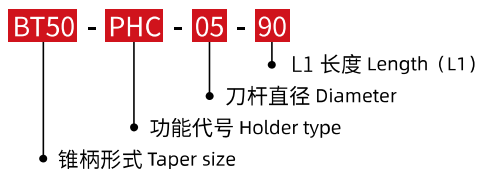
·BT50-PHC 液压刀柄

BT50-PHC HYDRAULIC TOOL HOLDER


 液压刀柄系列
 HYDRAULIC CHUCKS SERIES

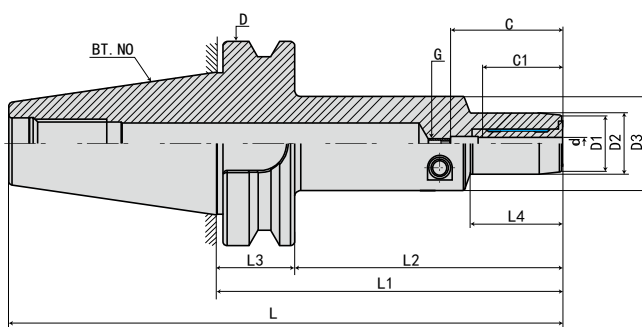
型号 Model	L	L1	L2	L3	L4	D	D1	D2	D3	d	最大插入深度 C Max. insertion depth	最少插入深度 C1 Min insertion depth	G	重量 KGS
BT50-PHC05- 90	191.8	90	52	38	32	100	22	25	49.5	5	*	26	*	4.2
-120	221.8	120	82	38	44	100	22	25	49.5	5	*	26	*	4.5
-PHC06- 90	191.8	90	52	38	32	100	23	26	49.5	6	37	27	M5*0.8P	4.2
-120	221.8	120	82	38	44	100	23	26	49.5	6	37	27	M5*0.8P	4.5
-PHC08- 90	191.8	90	52	38	32	100	25	28	49.5	8	37	27	M6*1.0P	4.2
-120	221.8	120	82	38	44	100	25	28	49.5	8	37	27	M6*1.0P	4.5
-PHC10- 90	191.8	90	52	38	32	100	27	30	49.5	10	41	31	M8*1.0P	4.2
-120	221.8	120	82	38	44	100	27	30	49.5	10	41	31	M8*1.0P	4.5
-PHC12- 90	191.8	90	52	38	32	100	29	32	49.5	12	46	36	M10*1.0P	4.3
-120	221.8	120	82	38	44	100	29	32	49.5	12	46	36	M10*1.0P	4.5
-PHC14- 90	191.8	90	52	38	32	100	31	34	49.5	14	46	36	M10*1.0P	4.3
-120	221.8	120	82	38	44	100	31	34	49.5	14	46	36	M10*1.0P	4.6
-PHC16- 90	191.8	90	52	38	32	100	35	38	49.5	16	75	39	M12*1.0P	4.3
-120	221.8	120	82	38	48	100	35	38	49.5	16	75	39	M12*1.0P	4.6
-PHC18- 90	191.8	90	52	38	32	100	37	40	49.5	18	75	39	M12*1.0P	4.4
-120	221.8	120	82	38	48	100	37	40	49.5	18	75	39	M12*1.0P	4.6
-PHC20- 90	191.8	90	52	38	32	100	39	42	49.5	20	75	41	M16*1.0P	4.4
-120	221.8	120	82	38	48	100	39	42	49.5	20	75	41	M16*1.0P	4.7
-PHC25-120	221.8	120	82	38	48	100	53	57	63	25	80	47	M16*1.0P	4.9
-PHC32-120	221.8	120	82	38	48	100	58	62	70	32	90	51	M16*1.0P	5.2
-PHC40-120	221.8	120	82	38		100				40	90	61	M16*1.0P	6
-PHC42-120	221.8	120	82	38		100				42	90	61	M16*1.0P	6
-PHC50-120	221.8	120	82	38		100				50	90	61	M16*1.0P	7

规格说明:



·BT50-PHC 液压刀柄

BT50-PHC HYDRAULIC TOOL HOLDER



型号 Model	L	L1	L2	L3	L4	D	D1	D2	D3	d	最大插入深度 C Max. insertion depth	最少插入深度 C1 Min insertion depth	G	重量 KGS
BT50-PHC05-140	241.8	140	102	38	29	100	22	25	49.5	5	*	26	*	4.8
-200	301.8	200	162	38	29	100	22	25	49.5	5	*	26	*	5.2
-PHC06-140	241.8	140	102	38	29	100	23	26	49.5	6	37	27	M5*0.8P	4.8
-200	301.8	200	162	38	29	100	23	26	49.5	6	37	27	M5*0.8P	5.2
PHC08-140	241.8	140	102	38	30	100	25	28	49.5	8	37	27	M6*1.0P	4.8
-200	301.8	200	162	38	30	100	25	28	49.5	8	37	27	M6*1.0P	5.2
-PHC10-140	241.8	140	102	38	35	100	27	30	49.5	10	41	31	M8*1.0P	4.8
-200	301.8	200	162	38	35	100	27	30	49.5	10	41	31	M8*1.0P	5.2
-PHC12-140	241.8	140	102	38	40	100	29	32	49.5	12	46	36	M10*1.0P	4.8
-200	301.8	200	162	38	40	100	29	32	49.5	12	46	36	M10*1.0P	5.2
-PHC14-140	241.8	140	102	38	40	100	31	34	49.5	14	46	36	M10*1.0P	4.8
-200	301.8	200	162	38	40	100	31	34	49.5	14	46	36	M10*1.0P	5.2
-PHC16-140	241.8	140	102	38	45	100	35	38	49.5	16	75	39	M12*1.0P	4.8
-200	301.8	200	162	38	45	100	35	38	49.5	16	75	39	M12*1.0P	5.2
-PHC18-140	241.8	140	102	38	46	100	37	40	49.5	18	75	39	M12*1.0P	4.9
-200	301.8	200	162	38	46	100	37	40	49.5	18	75	39	M12*1.0P	5.3
-PHC20-140	241.8	140	102	38	42	100	39	42	49.5	20	75	41	M16*1.0P	4.9
-200	301.8	200	162	38	42	100	39	42	49.5	20	75	41	M16*1.0P	5.3
-PHC25-140	241.8	140	102	38	48	100	53	57	63	25	80	47	M16*1.0P	5.6
-200	301.8	200	162	38	48	100	53	57	63	25	80	47	M16*1.0P	6
-PHC32-140	241.8	140	102	38	50	100	58	62	70	32	90	51	M16*1.0P	5.8
-200	301.8	200	162	38	50	100	58	62	70	32	90	51	M16*1.0P	6.2

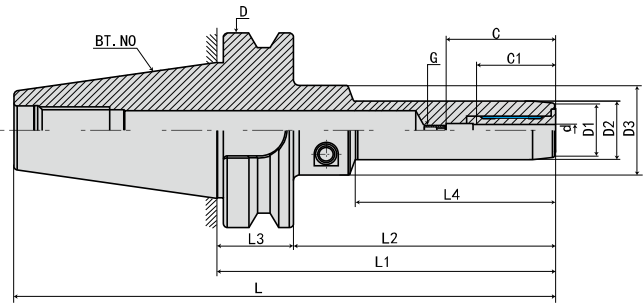
规格说明:

BT50 - PHC - 05 - 140

- L1 长度 Length (L1)
- 刀杆直径 Diameter
- 功能代号 Holder type
- 锥柄形式 Taper size

·BT50-JPHC 液压刀柄

BT50-JPHC HYDRAULIC TOOL HOLDER



型号 Model	L	L1	L2	L3	L4	D	D1	D2	D3	d	最大插入深度 C Max. insertion depth	最少插入深度 C1 Min insertion depth	G	重量 KGS
BT50-JPHC05-160	261.8	160	122	38	104	100	22	25	49.5	5	*	26	*	4.8
-200	301.8	200	162	38	144	100	22	25	49.5	5	*	26	*	5.2
-250	351.8	250	212	38	194	100	22	25	49.5	5	*	26	*	5.6
-JPHC06-160	261.8	160	122	38	104	100	23	26	49.5	6	37	27	M5*0.8P	4.8
-200	301.8	200	162	38	144	100	23	26	49.5	6	37	27	M5*0.8P	5.2
-250	351.8	250	212	38	194	100	23	26	49.5	6	37	27	M5*0.8P	5.6
-JPHC08-160	261.8	160	122	38	104	100	25	28	49.5	8	37	27	M6*1.0P	4.8
-200	301.8	200	162	38	144	100	25	28	49.5	8	37	27	M6*1.0P	5.2
-250	351.8	250	212	38	194	100	25	28	49.5	8	37	27	M6*1.0P	5.6
-JPHC10-160	261.8	160	122	38	105	100	27	30	49.5	10	41	31	M8*1.0P	4.8
-200	301.8	200	162	38	145	100	27	30	49.5	10	41	31	M8*1.0P	5.2
-250	351.8	250	212	38	195	100	27	30	49.5	10	41	31	M8*1.0P	5.6
-JPHC12-160	261.8	160	122	38	105	100	29	32	49.5	12	46	36	M10*1.0P	4.8
-200	301.8	200	162	38	145	100	29	32	49.5	12	46	36	M10*1.0P	5.2
-250	351.8	250	212	38	195	100	29	32	49.5	12	46	36	M10*1.0P	5.6
-JPHC14-160	261.8	160	122	38	107	100	31	34	49.5	14	46	36	M10*1.0P	4.8
-200	301.8	200	162	38	147	100	31	34	49.5	14	46	36	M10*1.0P	5.2
-250	351.8	250	212	38	197	100	31	34	49.5	14	46	36	M10*1.0P	5.6
-JPHC16-160	261.8	160	122	38	107	100	35	38	49.5	16	75	39	M12*1.0P	5
-200	301.8	200	162	38	147	100	35	38	49.5	16	75	39	M12*1.0P	5.4
-250	351.8	250	212	38	197	100	35	38	49.5	16	75	39	M12*1.0P	5.8
-JPHC18-160	261.8	160	122	38	108	100	37	40	49.5	18	75	39	M12*1.0P	5
-200	301.8	200	162	38	148	100	37	40	49.5	18	75	39	M12*1.0P	5.4
-250	351.8	250	212	38	198	100	37	40	49.5	18	75	39	M12*1.0P	5.8
-JPHC20-160	261.8	160	122	38	108	100	39	42	49.5	20	75	41	M16*1.0P	5
-200	301.8	200	162	38	148	100	39	42	49.5	20	75	41	M16*1.0P	5.4
-250	351.8	250	212	38	198	100	39	42	49.5	20	75	41	M16*1.0P	5.8
-JPHC25-160	261.8	160	122	38	110	100	53	57	63	25	80	47	M16*1.0P	5.2
-200	301.8	200	162	38	150	100	53	57	63	25	80	47	M16*1.0P	5.6
-250	351.8	250	212	38	200	100	53	57	63	25	80	47	M16*1.0P	6
-JPHC32-160	261.8	160	122	38	110	100	58	63	70	32	90	51	M16*1.0P	6
-200	301.8	200	162	38	150	100	58	63	70	32	90	51	M16*1.0P	6.2
-250	351.8	250	212	38	200	100	58	63	70	32	90	51	M16*1.0P	6.4

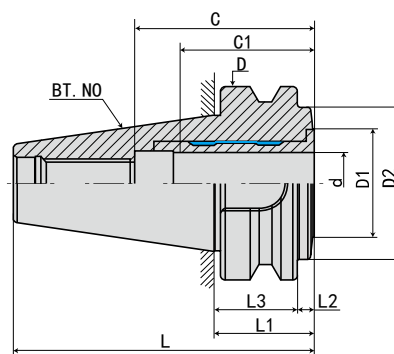
规格说明:

BT50 - JPHC - 05 - 160

- L1 长度 Length (L1)
- 刀杆直径 Diameter
- 功能代号 Holder type
- 锥柄形式 Taper size

·BT50-PHC 液压刀柄

BT50-PHC HYDRAULIC TOOL HOLDER



型号 Model	L	L1	L2	L3	D	D1	D2	d	最大插入深度 C Max. insertion depth	最少插入深度 C1 Min insertion depth	G	重量 KGS
BT50-PHC32-51	152.8	51	13	38	100	46	70.5	32	71	61	M16*1.0P	3.8

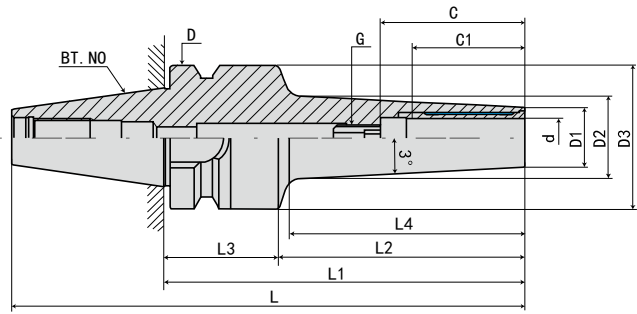
规格说明:

BT50 - PHC - 32 - 51

- L1 长度 Length (L1)
- 刀杆直径 Diameter
- 功能代号 Holder type
- 锥柄形式 Taper size

·BT30-SPHC 液压刀柄

BT30-SPHC HYDRAULIC TOOL HOLDER



型号 Model	L	L1	L2	L3	L4	D	D1	D2	D3	d	最大插入深度 C Max.insertiondepth	最少插入深度 C1 Mininsertiondepth	G	重量 KGS
BT30-SPHC03- 85	133.4	85	63	22	42	46	11		45	3	*	18	*	1.1
-SPHC04- 85	133.4	85	63	22	42	46	11		45	4	*	24	*	1.1
-SPHC05- 85	133.4	85	63	22	42	46	12		45	5	*	26	*	1.4
-SPHC06-115	163.4	115	93	22	74	46	13		45	6	37	27	M5*0.8P	1.4
-SPHC08-115	163.4	115	93	22	74	46	15		45	8	37	27	M6*1.0P	1.4
-SPHC10-115	163.4	115	93	22	74	46	17		45	10	41	31	M8*1.0P	1.4
-SPHC12-115	163.4	115	93	22	75	46	19		45	12	46	36	M10*1.0P	1.4

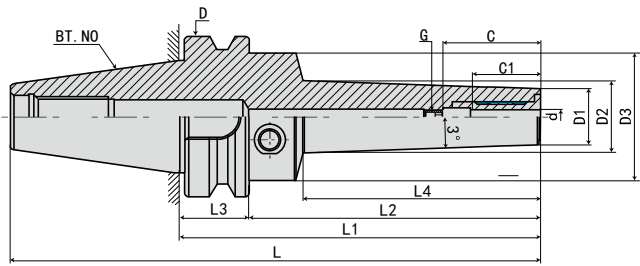
规格说明:

BT30 - SPHC - 03 - 85

- L1 长度 Length (L1)
- 刀杆直径 Diameter
- 功能代号 Holder type
- 锥柄形式 Taper size

·BT40-SPHC 液压刀柄

BT40-SPHC HYDRAULIC TOOL HOLDER



型号 Model	L	L1	L2	L3	L4	D	D1	D2	D3	d	最大插入深度 C Max. insertion depth	最少插入深度 C1 Min insertion depth	G	重量 KGS
BT40-SPHC03- 90	155.4	90	63	27	42	63	11		46	3	*	18	*	1.1
-120	185.4	120	93	27	72	63	11		46	3	*	18	*	1.3
-SPHC04- 90	155.4	90	63	27	42	63	11		46	4	*	24	*	1.1
-120	185.4	120	93	27	72	63	11		46	4	*	24	*	1.3
-SPHC05- 90	155.4	90	63	27	42	63	12		46	5	*	26	*	1.4
-120	185.4	120	93	27	72	63	12		46	5	*	26	*	1.3
-SPHC06-120	185.4	120	93	27	74	63	13		46	6	37	27	M5*0.8P	1.4
-150	215.4	150	123	27	104	63	13		46	6	37	27	M5*0.8P	1.5
-200	265.4	200	173	27	154	63	13		46	6	37	27	M5*0.8P	1.7
-SPHC08-120	185.4	120	93	27	74	63	15		46	8	37	27	M6*1.0P	1.4
-150	215.4	150	123	27	104	63	15		46	8	37	27	M6*1.0P	1.5
-200	265.4	200	173	27	154	63	15		46	8	37	27	M6*1.0P	1.7
-SPHC10-120	185.4	120	93	27	74	63	17		46	10	41	31	M8*1.0P	1.4
-150	215.4	150	123	27	104	63	17		46	10	41	31	M8*1.0P	1.5
-200	265.4	200	173	27	154	63	17		46	10	41	31	M8*1.0P	1.7
-SPHC12-120	185.4	120	93	27	75	63	19		46	12	46	36	M10*1.0P	1.4
-150	215.4	150	123	27	105	63	19		46	12	46	36	M10*1.0P	1.5
-200	265.4	200	173	27	154	63	19		46	12	46	36	M10*1.0P	1.7
-SPHC14-120	185.4	120	93	27	75	63	21		46	14	46	36	M10*1.0P	1.4
-150	215.4	150	123	27	105	63	21		46	14	46	36	M10*1.0P	1.5
-200	265.4	200	173	27	154	63	21		46	14	46	36	M10*1.0P	1.7
-SPHC16-120	185.4	120	93	27	75	63	23		50	16	49	39	M12*1.0P	1.5
-150	215.4	150	123	27	105	63	23		50	16	49	39	M12*1.0P	1.6
-SPHC16-200	265.4	200	173	27	154	63	23		50	16	49	39	M12*1.0P	1.8
-SPHC18-120	185.4	120	93	27	75	63	25		50	18	49	39	M12*1.0P	1.5
-150	215.4	150	123	27	105	63	25		50	18	49	39	M12*1.0P	1.6
-200	265.4	200	173	27	154	63	25		50	18	49	39	M12*1.0P	1.8
-SPHC20-120	185.4	120	93	27	75	63	27		50	20	51	41	M16*1.0P	1.6
-150	215.4	150	123	27	105	63	27		50	20	51	41	M16*1.0P	1.7
-200	265.4	200	173	27	154	63	27		50	20	51	41	M16*1.0P	1.9

规格说明:

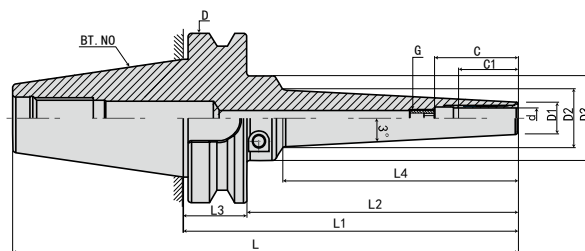
BT40 - SPHC - 03 - 90

- L1 长度 Length (L1)
- 刀杆直径 Diameter
- 功能代号 Holder type
- 锥柄形式 Taper size



·BT50-SPHC 液压刀柄

BT50-SPHC HYDRAULIC TOOL HOLDER



型号 Model	L	L1	L2	L3	L4	D	D1	D2	D3	d	最大插入深度 C Max. insertion depth	最少插入深度 C1 Min insertion depth	G	重量 KGS
BT50-SPHC05-150	251.8	150	112	38	80	100	12		50	5	*	26	*	4.2
-200	301.8	200	162	38	130	100	12		50	5	*	26	*	4.4
-250	351.8	250	212	38	180	100	12		50	5	*	26	*	4.6
-300	401.8	300	262	38	230	100	12		50	5	*	26	*	4.8
-SPHC06-150	251.8	150	112	38	80	100	13		50	6	37	27	M5*0.8P	4.2
-200	301.8	200	162	38	130	100	13		50	6	37	27	M5*0.8P	4.4
-250	351.8	250	212	38	180	100	13		50	6	37	27	M5*0.8P	4.6
-300	401.8	300	262	38	230	100	13		50	6	37	27	M5*0.8P	4.8
-SPHC08-150	251.8	150	112	38	80	100	15		50	8	37	27	M6*1.0P	4.2
-200	301.8	200	162	38	130	100	15		50	8	37	27	M6*1.0P	4.4
-250	351.8	250	212	38	180	100	15		50	8	37	27	M6*1.0P	4.6
-300	401.8	300	262	38	230	100	15		50	8	37	27	M6*1.0P	4.8
-SPHC10-150	251.8	150	112	38	80	100	17		50	10	41	31	M8*1.0P	4.3
-200	301.8	200	162	38	130	100	17		50	10	41	31	M8*1.0P	4.5
-250	351.8	250	212	38	180	100	17		50	10	41	31	M8*1.0P	4.7
-300	401.8	300	262	38	230	100	17		50	10	41	31	M8*1.0P	4.9
-SPHC12-150	251.8	150	112	38	80	100	19		50	12	46	36	M10*1.0P	4.3
-200	301.8	200	162	38	130	100	19		50	12	46	36	M10*1.0P	4.5
-250	351.8	250	212	38	180	100	19		50	12	46	36	M10*1.0P	4.7
-300	401.8	300	262	38	230	100	19		50	12	46	36	M10*1.0P	4.9
-SPHC14-150	251.8	150	112	38	80	100	21		50	14	46	36	M10*1.0P	4.4
-200	301.8	200	162	38	130	100	21		50	14	46	36	M10*1.0P	4.6
-250	351.8	250	212	38	180	100	21		50	14	46	36	M10*1.0P	4.8
-300	401.8	300	262	38	230	100	21		50	14	46	36	M10*1.0P	5
-SPHC16-150	251.8	150	112	38	80	100	23		50	16	75	39	M12*1.0P	4.4
-200	301.8	200	162	38	130	100	23		50	16	75	39	M12*1.0P	4.6
-250	351.8	250	212	38	180	100	23		50	16	75	39	M12*1.0P	4.8
-300	401.8	300	262	38	230	100	23		50	16	75	39	M12*1.0P	5
-SPHC18-150	251.8	150	112	38	80	100	25		50	18	75	39	M12*1.0P	4.5
-200	301.8	200	162	38	130	100	25		50	18	75	39	M12*1.0P	4.7
-250	351.8	250	212	38	180	100	25		50	18	75	39	M12*1.0P	4.9
-300	401.8	300	262	38	230	100	25		50	18	75	39	M12*1.0P	5.1
-SPHC20-150	251.8	150	112	38	80	100	27		50	20	75	41	M16*1.0P	4.6
-200	301.8	200	162	38	130	100	27		50	20	75	41	M16*1.0P	4.8
-250	351.8	250	212	38	180	100	27		50	20	75	41	M16*1.0P	5
-300	401.8	300	262	38	230	100	27		50	20	75	41	M16*1.0P	5.2

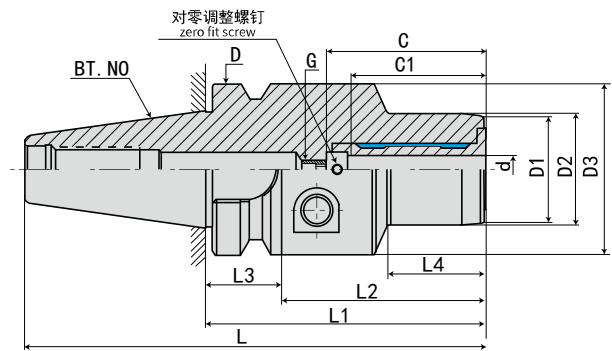
规格说明:

BT50 - SPHC - 05 - 150

- L1 长度 Length (L1)
- 刀杆直径 Diameter
- 功能代号 Holder type
- 锥柄形式 Taper size

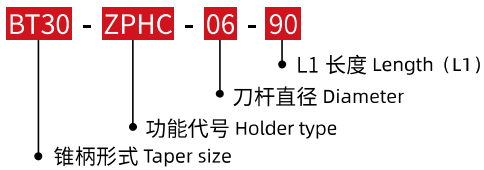
·BT30-ZPHC 调零液压刀柄

BT30-ZPHC ZERO FIT HYDRAULIC TOOL HOLDER



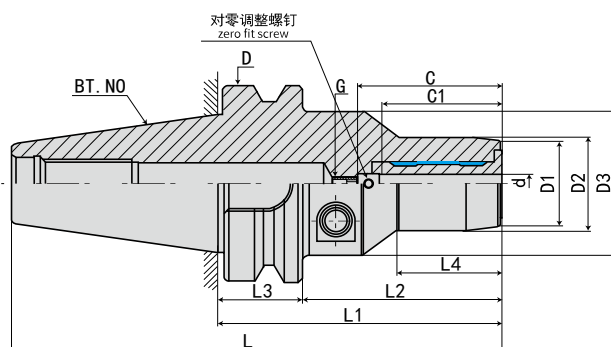
型号 Model	L	L1	L2	L3	L4	D	D1	D2	D3	d	最大插入深度 C Max. insertion depth	最少插入深度 C1 Min insertion depth	G	重量 KGS
BT30-ZPHC06- 90	138.4	90	68	22	48	46	23	26	45	6	41	31	M5*0.8P	0.8
-ZPHC08- 90	138.4	90	68	22	48	46	25	28	45	8	41	31	M6*1.0P	0.8
-ZPHC10- 90	138.4	90	68	22	51	46	27	30	45	10	48	38	M8*1.0P	0.8
-ZPHC12- 95	143.4	95	73	22	56	46	29	32	45	12	53	43	M10*1.0P	0.9
-ZPHC16-100	148.4	100	78	22	58	46	35	38	45	16	58	48	M12*1.0P	1.1
-ZPHC20-105	153.4	105	83	22	63	46	39	42	45	20	58	48	M16*1.0P	1.2

规格说明:



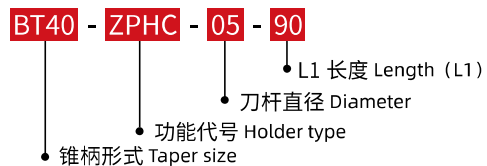
·BT40-ZPHC 调零液压刀柄

BT40-ZPHC ZERO FIT HYDRAULIC TOOL HOLDER


 液压刀柄系列
 HYDRAULIC CHUCKS SERIES

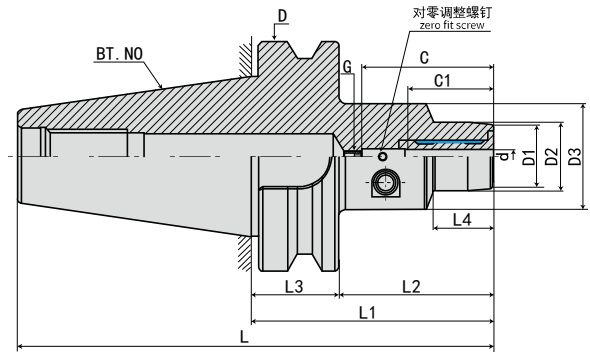
型号 Model	L	L1	L2	L3	L4	D	D1	D2	D3	d	最大插入深度 C Max. insertion depth	最少插入深度 C1 Min insertion depth	G	重量 KGS
BT40-ZPHC05- 90	155.4	90	63	27	44	63	22	25	50	5	*	26	*	1.4
-ZPHC06- 90	155.4	90	63	27	44	63	23	26	50	6	41	31	M5*0.8P	1.4
-ZPHC08- 90	155.4	90	63	27	44	63	25	28	50	8	41	31	M6*1.0P	1.4
-ZPHC10- 95	160.4	95	68	27	49	63	27	30	50	10	48	38	M8*1.0P	1.5
-ZPHC12-100	165.4	100	73	27	54	63	29	32	50	12	53	43	M10*1.0P	1.6
-ZPHC16-105	170.4	105	78	27	63	63	35	38	50	16	58	48	M12*1.0P	1.7
-ZPHC20-105	170.4	105	78	27	63	63	39	42	50	20	58	48	M16*1.0P	1.8
-ZPHC25-110	175.4	110	83	27	*	63	53	57	57	25	67	57	M16*1.0P	2.3
-ZPHC32-115	180.4	115	88	27	*	63	58	62	62	32	71	61	M16*1.0P	2.6

规格说明:



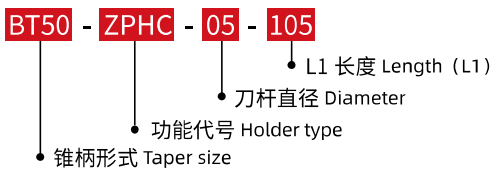
·BT50-ZPHC 调零液压刀柄

BT50-ZPHC ZERO FIT HYDRAULIC TOOL HOLDER



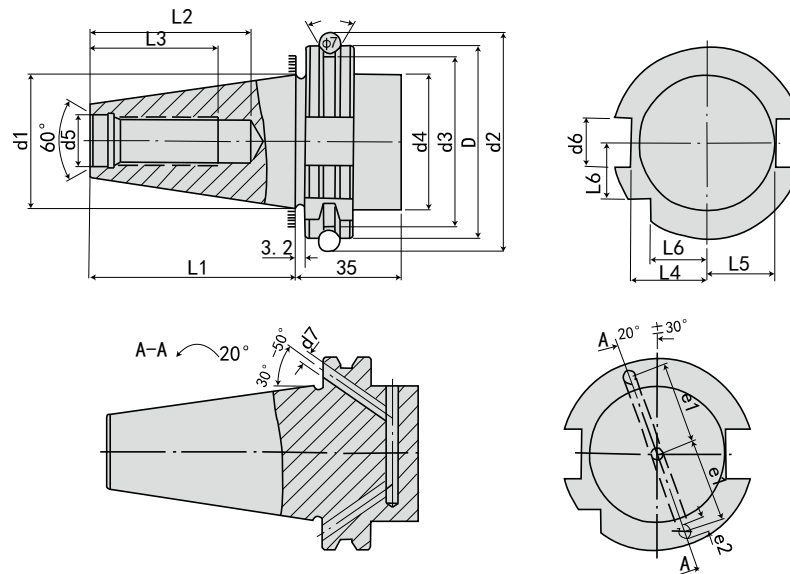
型号 Model	L	L1	L2	L3	L4	D	D1	D2	D3	d	最大插入深度 C Max. insertion depth	最少插入深度 C1 Min insertion depth	G	重量 KGS
BT50-ZPHC05-105	206.8	105	67	38	47	100	21	25	50	5	*	26	*	4.2
-ZPHC06-105	206.8	105	67	38	47	100	23	26	50	6	41	31	M5*0.8P	4.2
-ZPHC08-105	206.8	105	67	38	47	100	25	28	50	8	41	31	M6*1.0P	4.2
-ZPHC10-110	211.8	110	72	38	52	100	27	30	50	10	48	38	M8*1.0P	4.3
-ZPHC12-115	216.8	115	77	38	57	100	29	32	50	12	53	43	M10*1.0P	4.3
-ZPHC16-120	221.8	120	82	38	62	100	35	38	50	16	58	48	M12*1.0P	4.5
-ZPHC20-120	221.8	120	82	38	62	100	39	42	50	20	58	48	M16*1.0P	4.6
-ZPHC25-125	226.8	125	87	38	*	100	53	57	57	25	67	57	M16*1.0P	5.2
-ZPHC32-125	226.8	125	87	38	*	100	58	62	62	32	71	61	M16*1.0P	5.4

规格说明:



·参考资料

REFERENCE DETAILS



规格 Model	D 0 -0.4	d1	d2 ±0.05	d3 0 -0.5	d4 Max.	d5 H7	d6 H12	d7	L1 0 -0.3	L2 Min	L3 Min	L4 0 -0.4	L5 0 -0.5	L6 0 -0.3	e1 ±0.1	e2 Max.
SK30	50	31.75	59.30	44.30	45	13	16.1	4	47.8	33.5	24	19	16.4	15	21	5
SK40	63.55	44.45	72.30	56.25	50	17	16.1	4	68.4	42.5	32	25	22.8	18.5	27	5
SK50	97.50	69.85	107.25	91.25	80	25	25.7	6	101.75	61.5	47	37.7	35.5	30	42	7

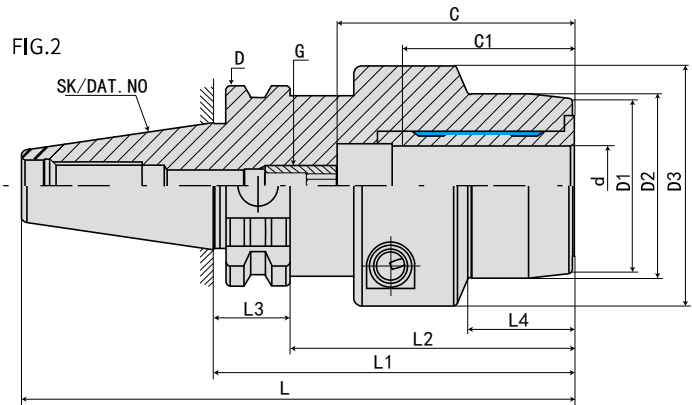
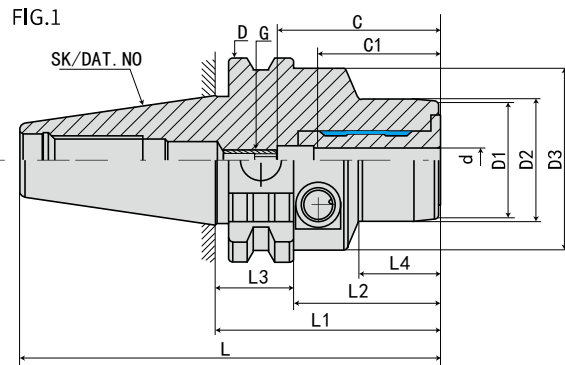
特点:

- ◎锥度精度: <AT3
- ◎基本材质: JIS-SCM415
- ◎硬度: HRC56°渗碳深度 >0.8mm
- ◎真圆度: <0.8um
- ◎表面粗糙度: Ra<0.5um
- ◎刀柄本体可另外指定: 通过 V 型法兰端出水规格 (DIN-69871-AD+B)
- ◎ ER、FMA、FMB、MLT、SCK、SLN、SOM 皆符合: 通过刀柄本体中心出水规格 (DIN-69871-AD)
- ◎刀柄有预设标准动平衡 G6.3, 可另外指定精密动平衡 G2.5
- ◎本体规范: DIN 69871

液压刀柄系列
HYDRAULIC CHUCKS SERIES

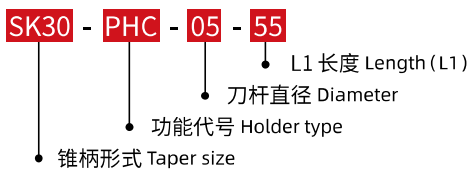
·SK30-PHC 液压刀柄

SK30-PHC HYDRAULIC TOOL HOLDER



型号 Model	L	L1	L2	L3	L4	D	D1	D2	D3	d	最大插入深度 C Max. insertion depth	最少插入深度 C1 Min insertion depth	G	FIG	重量 KGS
SK30-PHC05- 55	102.8	55	35.9	19.1	20	50	21	25	45	5	*	26	*	1	0.6
-PHC06- 55	102.8	55	35.9	19.1	20	50	22	26	45	6	37	27	M5*0.8P	1	0.6
-PHC08- 55	102.8	55	35.9	19.1	20	50	24	28	45	8	37	27	M6*1.0P	1	0.6
-PHC10- 55	102.8	55	35.9	19.1	21	50	26	30	45	10	41	31	M8*1.0P	1	0.6
-PHC12- 55	102.8	55	35.9	19.1	22	50	28	32	45	12	46	36	M10*1.0P	1	0.6
-PHC14- 90	137.8	90	70.9	19.1	42	50	30	34	45	14	46	36	M10*1.0P	1	0.7
-PHC16- 90	137.8	90	70.9	19.1	50	50	34	38	45	16	49	39	M10*1.0P	1	0.7
-PHC18- 90	137.8	90	70.9	19.1	50	50	36	40	45	18	49	39	M10*1.0P	1	0.7
-PHC20- 90	137.8	90	70.9	19.1	50	50	38	42	45	20	51	41	M10*1.0P	1	0.7
-PHC25-115	157.8	110	95.9	19.1		50	53	57	63	25	57	47	M10*1.0P	2	1
-PHC32-115	157.8	110	95.9	19.1		50	60	64	63	32	61	51	M10*1.0P	2	1

规格说明:



液压刀柄系列
HYDRAULIC CHUCKS SERIES

·SK40-PHC 液压刀柄

SK40-PHC HYDRAULIC TOOL HOLDER



FIG.1

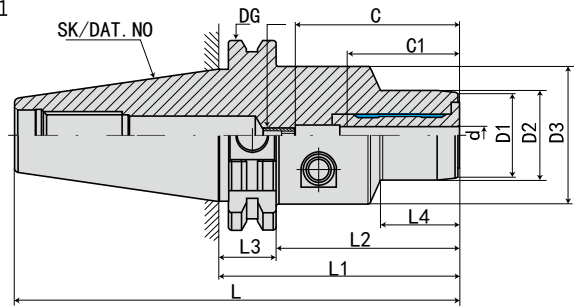
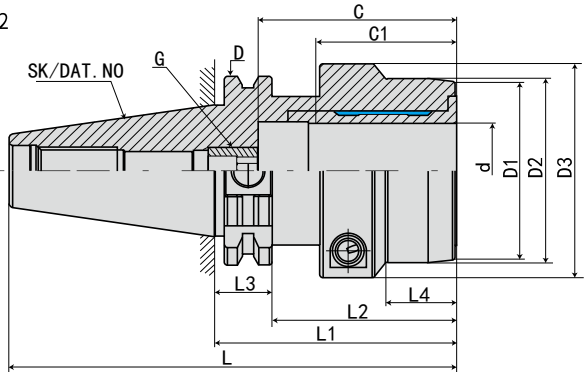


FIG.2



型号 Model	L	L1	L2	L3	L4	D	D1	D2	D3	d	最大插入深度 C Max. insertion depth	最少插入深度 C1 Min insertion depth	G	FIG	重量 KGS
SK40-PHC03-80.5	148.9	80.5	61.4	19.1	29.5	63.55	20	23	49.5	3	*	18	*	1	1.3
-PHC3.175-80.5	148.9	80.5	61.4	19.1	29.5	63.55	20	23	49.5	3.175	*	18	*	1	1.3
-PHC04-80.5	148.9	80.5	61.4	19.1	29.5	63.55	21	24	49.5	4	*	24	*	1	1.3
-PHC05-80.5	148.9	80.5	61.4	19.1	29.5	63.55	21	25	49.5	5	*	26	*	1	1.3
-PHC06-80.5	148.9	80.5	61.4	19.1	29.5	63.55	22	26	49.5	6	37	27	M5*0.8P	1	1.3
-PHC08-80.5	148.9	80.5	61.4	19.1	30	63.55	24	28	49.5	8	37	27	M6*1.0P	1	1.3
-PHC10-80.5	148.9	80.5	61.4	19.1	31	63.55	26	30	49.5	10	41	31	M8*1.0P	1	1.3
-PHC12-80.5	148.9	80.5	61.4	19.1	31.5	63.55	28	32	49.5	12	46	36	M10*1.0P	1	1.3
-PHC14-80.5	148.9	80.5	61.4	19.1	33	63.55	30	34	49.5	14	46	36	M10*1.0P	1	1.3
-PHC16-80.5	148.9	80.5	61.4	19.1	33	63.55	34	38	49.5	16	49	39	M12*1.0P	1	1.3
-PHC18-80.5	148.9	80.5	61.4	19.1	34	63.55	36	40	49.5	18	49	39	M12*1.0P	1	1.3
-PHC20-80.5	148.9	80.5	61.4	19.1	34	63.55	38	42	49.5	20	51	41	M16*1.0P	1	1.3
-PHC25-80.5	148.9	80.5	61.4	19.1	22	63.55	53	55	63	25	57	47	M16*1.0P	2	1.6
-PHC32-80.5	148.9	80.5	61.4	19.1	25.5	63.55	60	63	70	32	61	51	M16*1.0P	2	1.7

规格说明:

SK40 - PHC - 03 - 80.5

- L1 长度 Length (L1)
- 刀杆直径 Diameter
- 功能代号 Holder type
- 锥柄形式 Taper size

液压刀柄系列
HYDRAULIC CHUCKS SERIES

·SK40-PHC 液压刀柄

SK40-PHC HYDRAULIC TOOL HOLDER



FIG.1

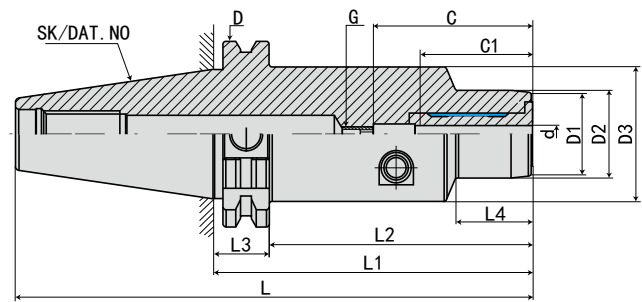
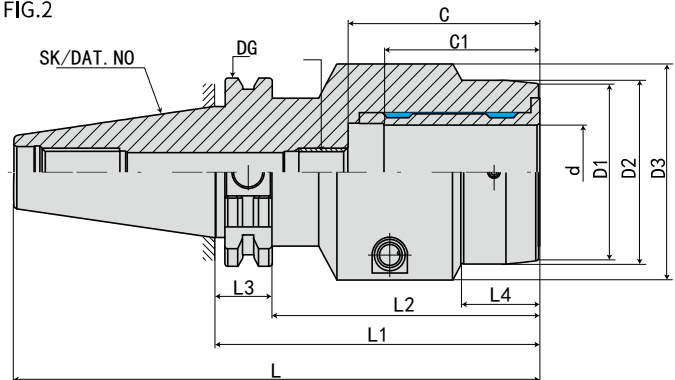
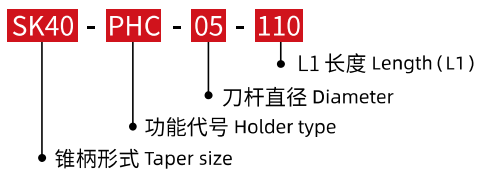


FIG.2



型号 Model	L	L1	L2	L3	L4	D	D1	D2	D3	d	最大插入深度 C Max. insertion depth	最少插入深度 C1 Min insertion depth	G	FIG	重量 KGS
SK40-PHC05-110	178.4	110	90.9	19.1	29.5	63.55	21	25	49.5	5	*	26	*	1	1.7
-PHC06-110	178.4	110	90.9	19.1	29.5	63.55	22	26	49.5	6	37	27	M5*0.8P	1	1.7
-PHC08-110	178.4	110	90.9	19.1	30	63.55	24	28	49.5	8	37	27	M6*1.0P	1	1.8
-PHC10-110	178.4	110	90.9	19.1	31	63.55	26	30	49.5	10	41	31	M8*1.0P	1	1.8
-PHC12-110	178.4	110	90.9	19.1	31.5	63.55	28	32	49.5	12	46	36	M10*1.0P	1	1.8
-PHC14-110	178.4	110	90.9	19.1	33	63.55	30	34	49.5	14	46	36	M10*1.0P	1	1.8
-PHC16-110	178.4	110	90.9	19.1	33	63.55	34	38	49.5	16	49	39	M12*1.0P	1	1.8
-PHC18-110	178.4	110	90.9	19.1	34	63.55	36	40	49.5	18	49	39	M12*1.0P	1	1.9
-PHC20-110	178.4	110	90.9	19.1	34	63.55	38	42	49.5	20	51	41	M16*1.0P	1	1.9
-PHC25-110	178.4	110	90.9	19.1	22	63.55	53	55	63	25	57	47	M16*1.0P	2	2.3
-PHC32-110	178.4	110	90.9	19.1	25.5	63.55	60	63	70	32	61	51	M16*1.0P	2	2.4

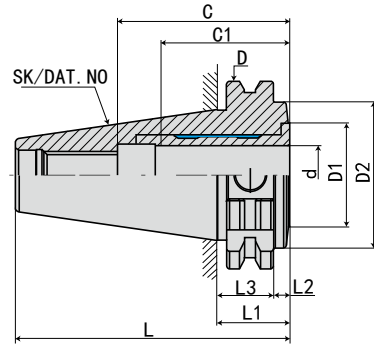
规格说明:



液压刀柄系列
HYDRAULIC CHUCKS SERIES

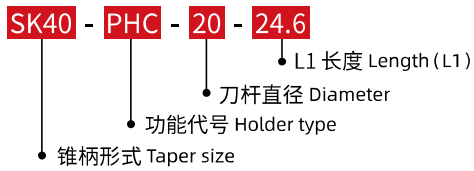
·SK40-PHC 液压刀柄

SK40-PHC HYDRAULIC TOOL HOLDER



型号 Model	L	L1	L2	L3	D	D1	D2	d	最大插入深度 C Max. insertion depth	最少插入深度 C1 Min insertion depth	G	重量 KGS
SK40-PHC20-24.6	93	24.6	5.5	19.1	63.55	34	49.5	20	51	41	M16*1.0P	0.6

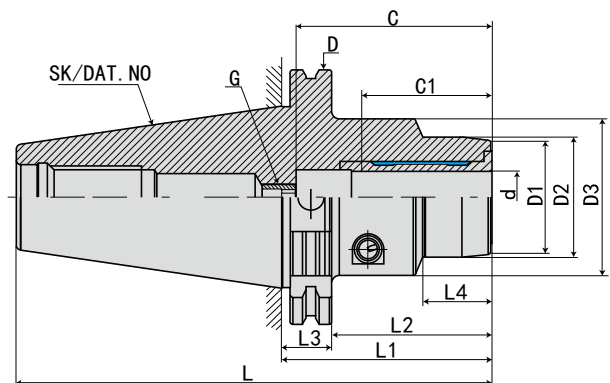
规格说明:



液压刀柄系列
HYDRAULIC CHUCKS SERIES

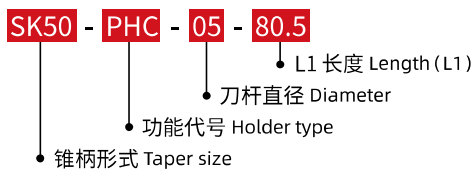
·SK50-PHC 液压刀柄

SK50-PHC HYDRAULIC TOOL HOLDER



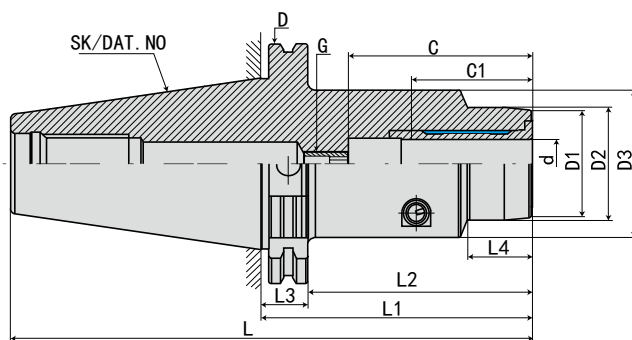
型号 Model	L	L1	L2	L3	L4	D	D1	D2	D3	d	最大插入深度 C Max. insertion depth	最少插入深度 C1 Min insertion depth	G	重量 KGS
SK50-PHC05-80.5	182.25	80.5	61.4	19.1	29.5	97.5	21	25	49.5	5	*	26	*	3.2
-PHC06-80.5	182.25	80.5	61.4	19.1	29.5	97.5	22	26	49.5	6	37	27	M5*0.8P	3.2
-PHC08-80.5	182.25	80.5	61.4	19.1	30	97.5	24	28	49.5	8	37	27	M6*1.0P	3.3
-PHC10-80.5	182.25	80.5	61.4	19.1	35	97.5	26	30	49.5	10	41	31	M8*1.0P	3.3
-PHC12-80.5	182.25	80.5	61.4	19.1	40	97.5	28	32	49.5	12	46	36	M10*1.0P	3.3
-PHC14-80.5	182.25	80.5	61.4	19.1	40	97.5	30	34	49.5	14	46	36	M10*1.0P	3.3
-PHC16-80.5	182.25	80.5	61.4	19.1	45	97.5	34	38	49.5	16	49	39	M12*1.0P	3.3
-PHC18-80.5	182.25	80.5	61.4	19.1	46	97.5	36	40	49.5	18	49	39	M12*1.0P	3.3
-PHC20-80.5	182.25	80.5	61.4	19.1	42	97.5	38	42	49.5	20	51	41	M16*1.0P	3.3
-PHC25- 100	201.75	100	80.9	19.1	48	97.5	53	55	63	25	57	47	M16*1.0P	3.8
-PHC32- 100	201.75	100	80.9	19.1	61	97.5	60	63	70	32	61	51	M16*1.0P	4.2

规格说明:



·SK50-PHC 液压刀柄

SK50-PHC HYDRAULIC TOOL HOLDER



型号 Model	L	L1	L2	L3	L4	D	D1	D2	D3	d	最大插入深度 C Max. insertion depth	最少插入深度 C1 Min insertion depth	G	重量 KGS
SK50-PHC05-110	211.75	110	90.9	19.1	29	97.5	21	25	49.5	5	*	26	*	2.5
-PHC06-110	211.75	110	90.9	19.1	29	97.5	22	26	49.5	6	37	27	M5*0.8P	2.5
-PHC08-110	211.75	110	90.9	19.1	30	97.5	24	28	49.5	8	37	27	M6*1.0P	3
-PHC10-110	211.75	110	90.9	19.1	35	97.5	26	30	49.5	10	41	31	M8*1.0P	3
-PHC12-110	211.75	110	90.9	19.1	40	97.5	28	32	49.5	12	46	36	M10*1.0P	5
-PHC14-110	211.75	110	90.9	19.1	40	97.5	30	34	49.5	14	46	36	M10*1.0P	5
-PHC16-110	211.75	110	90.9	19.1	45	97.5	34	38	49.5	16	49	39	M12*1.0P	5
-PHC18-110	211.75	110	90.9	19.1	46	97.5	36	40	49.5	18	49	39	M12*1.0P	5
-PHC20-110	211.75	110	90.9	19.1	42	97.5	38	42	49.5	20	51	41	M16*1.0P	8
-PHC25-110	211.75	110	90.9	19.1	48	97.5	53	55	63	25	57	47	M16*1.0P	8
-PHC32-110	211.75	110	90.9	19.1	61	97.5	60	63	70	32	61	51	M16*1.0P	8

规格说明:

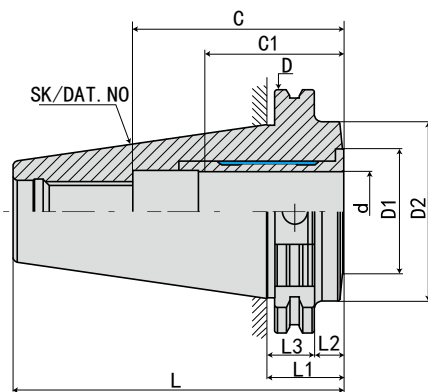
SK50 - PHC - 05 - 110

- L1 长度 Length(L1)
- 刀杆直径 Diameter
- 功能代号 Holder type
- 锥柄形式 Taper size

液压刀柄系列
HYDRAULIC CHUCKS SERIES

·SK50-PHC 液压刀柄

SK50-PHC HYDRAULIC TOOL HOLDER



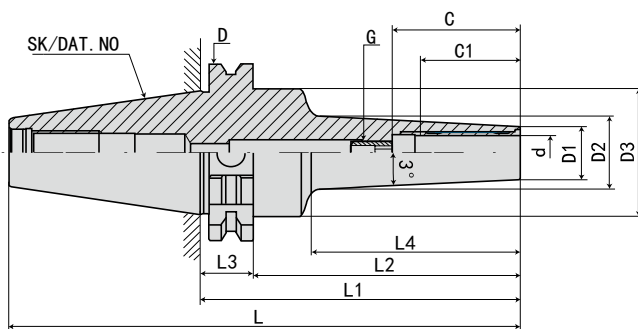
型号 Model	L	L1	L2	L3	D	D1	D2	d	最大插入深度 C Max. insertion depth	最少插入深度 C1 Min insertion depth	G	重量 KGS
SK50-PHC32-30.9	132.65	30.9	11.8	19.1	97.5	44.5	70.5	32	62.5	51	M16*1.0P	2.5

规格说明:

- SK50 - PHC - 32 - 30.9
- SK50 锥柄形式 Taper size
 - PHC 功能代号 Holder type
 - 32 刀杆直径 Diameter
 - 30.9 L1 长度 Length (L1)

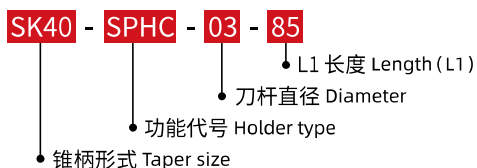
·SK40-SPHC 液压刀柄

SK40-SPHC HYDRAULIC TOOL HOLDER


 液压刀柄系列
 HYDRAULIC CHUCKS SERIES

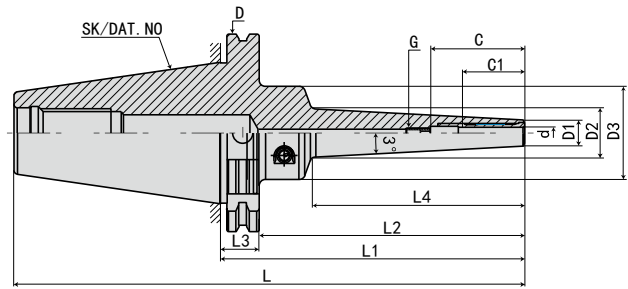
型号 Model	L	L1	L2	L3	L4	D	D1	D2	D3	d	最大插入深度 C Max. insertion depth	最少插入深度 C1 Min insertion depth	G	重量 KGS
SK40-SPHC03- 85	153.4	85	65.9	19.1	42	63.55	11	46	3	*	18	*	1.3	
-115	183.4	115	95.9	19.1	72	63.55	11	46	3	*	18	*	1.4	
SK40-SPHC04- 85	153.4	85	65.9	19.1	42	63.55	11	46	4	*	24	*	1.3	
-115	183.4	115	95.9	19.1	72	63.55	11	46	4	*	24	*	1.4	
-SPHC05- 85	153.4	85	65.9	19.1	42	63.55	12	46	5	*	26	*	1.3	
-115	183.4	115	95.9	19.1	72	63.55	12	46	5	*	26	*	1.4	
-SPHC06-115	183.4	115	95.9	19.1	74	63.55	13	46	6	37	27	M5*0.8P	1.4	
-145	213.4	145	125.9	19.1	104	63.55	13	46	6	37	27	M5*0.8P	1.5	
-SPHC08-115	183.4	115	95.9	19.1	74	63.55	15	46	8	37	27	M6*1.0P	1.4	
-145	213.4	145	125.9	19.1	104	63.55	15	46	8	37	27	M6*1.0P	1.5	
-SPHC10-115	183.4	115	95.9	19.1	74	63.55	17	46	10	41	31	M8*1.0P	1.4	
-145	213.4	145	125.9	19.1	104	63.55	17	46	10	41	31	M8*1.0P	1.5	
-SPHC12-115	183.4	115	95.9	19.1	74	63.55	19	46	12	46	36	M10*1.0P	1.4	
-145	213.4	145	125.9	19.1	104	63.55	19	46	12	46	36	M10*1.0P	1.5	
-SPHC14-115	183.4	115	95.9	19.1	74	63.55	21	46	14	46	36	M10*1.0P	1.6	
-145	213.4	145	125.9	19.1	104	63.55	21	46	14	46	36	M10*1.0P	1.8	
-SPHC16-115	183.4	115	95.9	19.1	74	63.55	23	50	16	49	39	M12*1.0P	1.7	
-145	213.4	145	125.9	19.1	104	63.55	23	50	16	49	39	M12*1.0P	1.9	
-SPHC18-115	183.4	115	95.9	19.1	74	63.55	25	50	18	49	39	M12*1.0P	1.7	
-145	213.4	145	125.9	19.1	104	63.55	25	50	18	49	39	M12*1.0P	1.9	
-SPHC20-115	183.4	115	95.9	19.1	74	63.55	27	50	20	51	41	M16*1.0P	1.8	
-145	213.4	145	125.9	19.1	104	63.55	27	50	20	51	41	M16*1.0P	2	

规格说明:



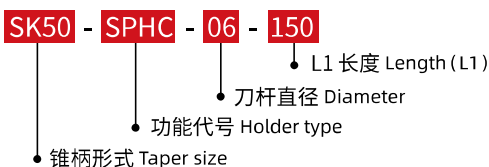
·SK50-SPHC 液压刀柄

SK50-SPHC HYDRAULIC TOOL HOLDER



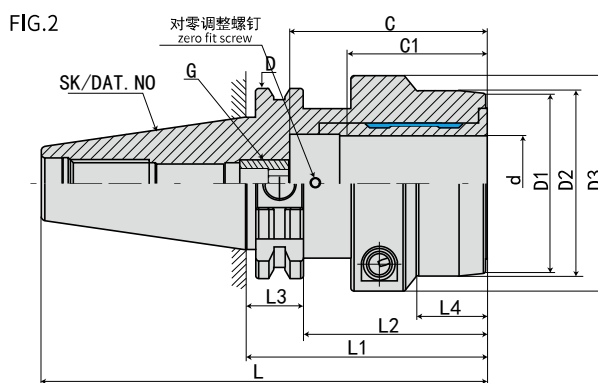
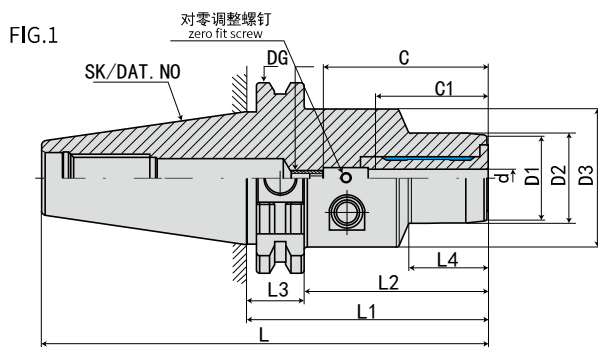
型号 Model	L	L1	L2	L3	L4	D	D1	D2	D3	d	最大插入深度 C Max. insertion depth	最少插入深度 C1 Min insertion depth	G	重量 KGS
SK50-SPHC06-150	251.75	150	130.9	19.1	100	97.5	13		50	6	37	27	M5*0.8P	4.2
-200	301.75	200	180.9	19.1	150	97.5	13		50	6	37	27	M5*0.8P	4.4
-250	351.75	250	230.9	19.1	200	97.5	13		50	6	37	27	M5*0.8P	4.6
-300	401.75	300	280.9	19.1	250	97.5	13		50	6	37	27	M5*0.8P	4.8
-SPHC08-150	251.75	150	130.9	19.1	100	97.5	15		50	8	37	27	M6*1.0P	4.2
-200	301.75	200	180.9	19.1	150	97.5	15		50	8	37	27	M6*1.0P	4.4
-250	351.75	250	230.9	19.1	200	97.5	15		50	8	37	27	M6*1.0P	4.6
-300	401.75	300	280.9	19.1	250	97.5	15		50	8	37	27	M6*1.0P	4.8
-SPHC10-150	251.75	150	130.9	19.1	100	97.5	17		50	10	41	31	M8*1.0P	4.3
-200	301.75	200	180.9	19.1	150	97.5	17		50	10	41	31	M8*1.0P	4.5
-250	351.75	250	230.9	19.1	200	97.5	17		50	10	41	31	M8*1.0P	4.7
-300	401.75	300	280.9	19.1	250	97.5	17		50	10	41	31	M8*1.0P	4.9
-SPHC12-150	251.75	150	130.9	19.1	100	97.5	19		50	12	46	36	M10*1.0P	4.3
-200	301.75	200	180.9	19.1	150	97.5	19		50	12	46	36	M10*1.0P	4.5
-250	351.75	250	230.9	19.1	200	97.5	19		50	12	46	36	M10*1.0P	4.7
-300	401.75	300	280.9	19.1	250	97.5	19		50	12	46	36	M10*1.0P	4.9
-SPHC14-150	251.75	150	130.9	19.1	100	97.5	21		50	14	46	36	M10*1.0P	4.4
-200	301.75	200	180.9	19.1	150	97.5	21		50	14	46	36	M10*1.0P	4.6
-250	351.75	250	230.9	19.1	200	97.5	21		50	14	46	36	M10*1.0P	4.8
-300	401.75	300	280.9	19.1	250	97.5	21		50	14	46	36	M10*1.0P	5
-SPHC16-150	251.75	150	130.9	19.1	100	97.5	23		50	16	75	39	M12*1.0P	4.4
-200	301.75	200	180.9	19.1	150	97.5	23		50	16	75	39	M12*1.0P	4.6
-250	351.75	250	230.9	19.1	200	97.5	23		50	16	75	39	M12*1.0P	4.8
-300	401.75	300	280.9	19.1	250	97.5	23		50	16	75	39	M12*1.0P	5
-SPHC18-150	251.75	150	130.9	19.1	100	97.5	25		50	18	75	39	M12*1.0P	4.5
-200	301.75	200	180.9	19.1	150	97.5	25		50	18	75	39	M12*1.0P	4.7
-250	351.75	250	230.9	19.1	200	97.5	25		50	18	75	39	M12*1.0P	4.9
-300	401.75	300	280.9	19.1	250	97.5	25		50	18	75	39	M12*1.0P	5.1
-SPHC20-150	251.75	150	130.9	19.1	100	97.5	27		50	20	75	41	M16*1.0P	4.6
-200	301.75	200	180.9	19.1	150	97.5	27		50	20	75	41	M16*1.0P	4.8
-250	351.75	250	230.9	19.1	200	97.5	27		50	20	75	41	M16*1.0P	5
-300	401.75	300	280.9	19.1	250	97.5	27		50	20	75	41	M16*1.0P	5.2

规格说明:



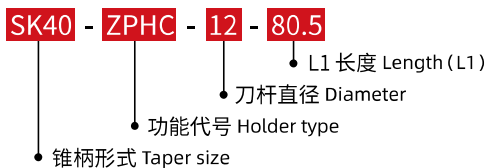
·SK40-ZPHC 调零液压刀柄

SK40-ZPHC ZERO FIT HYDRAULIC TOOL HOLDER



型号 Model	L	L1	L2	L3	L4	D	D1	D2	D3	d	最大插入深度 C Max. insertion depth	最少插入深度 C1 Min insertion depth	G	FIG	重量 KGS
SK40-ZPHC12-80.5	148.9	80.5	61.4	19.1	31.5	63.55	28	32	49.5	12	46	36	M10*1.0P	1	1.4
-ZPHC16-80.5	148.9	80.5	61.4	19.1	33	63.55	34	38	49.5	16	49	39	M12*1.0P	1	1.4
-ZPHC20-80.5	148.9	80.5	61.4	19.1	34	63.55	38	42	49.5	20	51	41	M16*1.0P	1	1.4
-ZPHC32-80.5	148.9	80.5	61.4	19.1	25.5	63.55	60	63	80	32	61	51	M16*1.0P	2	2

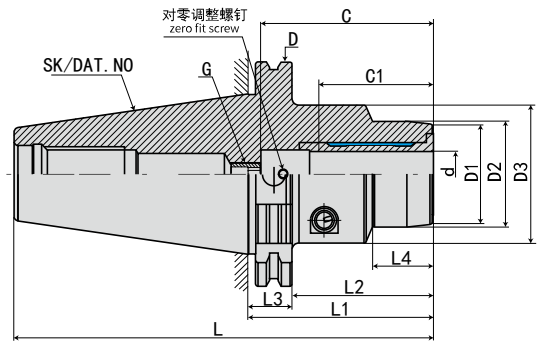
规格说明:



液压刀柄系列
HYDRAULIC CHUCKS SERIES

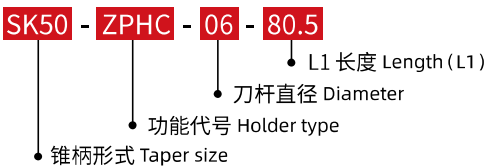
·SK50-ZPHC 调零液压刀柄

SK40-ZPHC ZERO FIT HYDRAULIC TOOL HOLDER



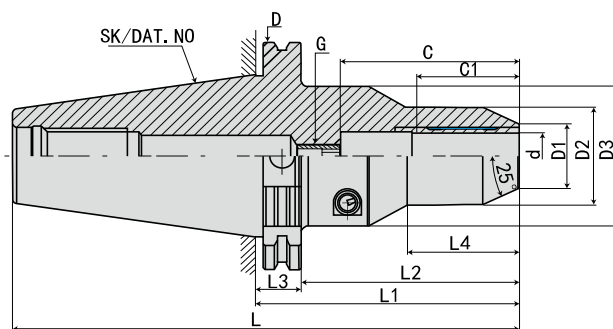
型号 Model	L	L1	L2	L3	L4	D	D1	D2	D3	d	最大插入深度 C Max. insertion depth	最少插入深度 C1 Min insertion depth	G	重量 KGS
SK50-ZPHC06-80.5	182.25	80.5	61.4	19.1	29.5	97.5	22	26	49.5	6	37	27	M5*0.8P	3.2
-ZPHC08-80.5	182.25	80.5	61.4	19.1	30	97.5	24	28	49.5	8	37	27	M6*1.0P	3.3
-ZPHC10-80.5	182.25	80.5	61.4	19.1	35	97.5	26	30	49.5	10	41	31	M8*1.0P	3.3
-ZPHC12-80.5	182.25	80.5	61.4	19.1	40	97.5	28	32	49.5	12	46	36	M10*1.0P	3.3
-ZPHC14-80.5	182.25	80.5	61.4	19.1	40	97.5	30	34	49.5	14	46	36	M10*1.0P	3.3
-ZPHC16-80.5	182.25	80.5	61.4	19.1	45	97.5	34	38	49.5	16	49	39	M12*1.0P	3.3
-ZPHC18-80.5	182.25	80.5	61.4	19.1	46	97.5	36	40	49.5	18	49	39	M12*1.0P	3.3
-ZPHC20-80.5	182.25	80.5	61.4	19.1	42	97.5	38	42	49.5	20	51	41	M16*1.0P	3.3
-ZPHC25-100	201.75	80.5	61.4	19.1	48	97.5	53	55	63	25	57	47	M16*1.0P	3.8
-ZPHC32-100	201.75	80.5	61.4	19.1	61	97.5	60	63	70	32	61	51	M16*1.0P	4.2

规格说明:



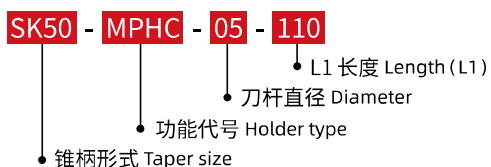
·SK50-MPHC 液压刀柄

SK50-MPHC HYDRAULIC TOOL HOLDER



型号 Model	L	L1	L2	L3	L4	D	D1	D2	D3	d	最大插入深度 C Max. insertion depth	最少插入深度 C1 Min insertion depth	G	重量 KGS
SK50-MPHC05-110	211.75	110	90.9	19.1	55	97.5	13	31	60	5	*	26	*	3.6
-MPHC06-110	211.75	110	90.9	19.1	55	97.5	14	32	60	6	43	27	M5*0.8P	3.6
-MPHC08-110	211.75	110	90.9	19.1	55	97.5	16	33.5	60	8	43	27	M6*1.0P	3.6
-MPHC10-110	211.75	110	90.9	19.1	55	97.5	18	35	60	10	43	31	M8*1.0P	3.6
-MPHC12-110	211.75	110	90.9	19.1	55	97.5	20	36.5	60	12	50	36	M10*1.0P	3.6
-MPHC14-110	211.75	110	90.9	19.1	60	97.5	22	38	60	14	50	36	M10*1.0P	3.7
-MPHC16-110	211.75	110	90.9	19.1	60	97.5	24	39.5	60	16	53	39	M12*1.0P	3.7
-MPHC18-110	211.75	110	90.9	19.1	60	97.5	27	41	60	18	53	39	M12*1.0P	3.8
-MPHC20-110	211.75	110	90.9	19.1	60	97.5	28	42	70	20	95	41	M16*1.0P	3.8
-MPHC25-110	211.75	110	90.9	19.1	60	97.5	30	44	70	25	95	47	M16*1.0P	3.9
-MPHC32-110	211.75	110	90.9	19.1	60	97.5	40	54	70	32	95	51	M16*1.0P	4

规格说明:


 液压刀柄系列
 HYDRAULIC CHUCKS SERIES

版权所有 翻印必究 ALL RIGHTS RESERVED

产品不断改进，当外形与参数变更时，均以实物为准，恕不另行通知

PRODUCTS ARE IMPROVED CONTINUOUSLY, EVERYTHING IS IN ACCORDANCE WITH
PRACTICALITY UNDER CHANGED OUTLINE AND PARAMETER, AND WITHOUT STILL FURTHER NOTICE.



山东欧诺威数控刀具有限公司

山东省济宁市泗水县泉源大道与金工一路交互处

国内销售专线：

TEL: 400-697-5558

E-mail: sales@ounuowei.com

ounuowei.1688.com

www.onwcnc.com

外贸销售专线：

TEL: 0086 537 6598237

FAX: 0086 537 6598237

E-mail: md3rd@ounuowei.com

ounuowei.en.alibaba.com

www.ounuowei.com